

Anti-Phospholipase D1 antibody ab240563

1 Image

Overview

Product name	Anti-Phospholipase D1 antibody
Description	Rabbit polyclonal to Phospholipase D1
Host species	Rabbit
Tested applications	Suitable for: IP
Species reactivity	Reacts with: Human
Immunogen	Synthetic peptide within Human PLD1 aa 525-575. The exact sequence is proprietary. Database link: Q13393
Positive control	IP: HeLa whole cell lysate.
General notes	<p>The Life Science industry has been in the grips of a reproducibility crisis for a number of years. Abcam is leading the way in addressing this with our range of recombinant monoclonal antibodies and knockout edited cell lines for gold-standard validation. Please check that this product meets your needs before purchasing.</p> <p>If you have any questions, special requirements or concerns, please send us an inquiry and/or contact our Support team ahead of purchase. Recommended alternatives for this product can be found below, along with publications, customer reviews and Q&As</p>

Properties

Form	Liquid
Storage instructions	Shipped at 4°C. Store at +4°C short term (1-2 weeks). Upon delivery aliquot. Store at -20°C long term. Avoid freeze / thaw cycle.
Storage buffer	<p>pH: 7</p> <p>Preservative: 0.09% Sodium azide</p> <p>Constituent: Tris citrate/phosphate</p>
Purity	pH 7-8
Clonality	Affinity purified
Isotype	Polyclonal
	IgG

Applications

The Abpromise guarantee

Our **Abpromise guarantee** covers the use of ab240563 in the following tested applications.

The application notes include recommended starting dilutions; optimal dilutions/concentrations should be determined by the end user.

Application	Abreviews	Notes
IP		Use at 2-10 µg/mg of lysate.

Target

Function

Implicated as a critical step in numerous cellular pathways, including signal transduction, membrane trafficking, and the regulation of mitosis. May be involved in the regulation of perinuclear intravesicular membrane traffic.

Tissue specificity

Expressed abundantly in the pancreas and heart and at high levels in brain, placenta, spleen, uterus and small intestine.

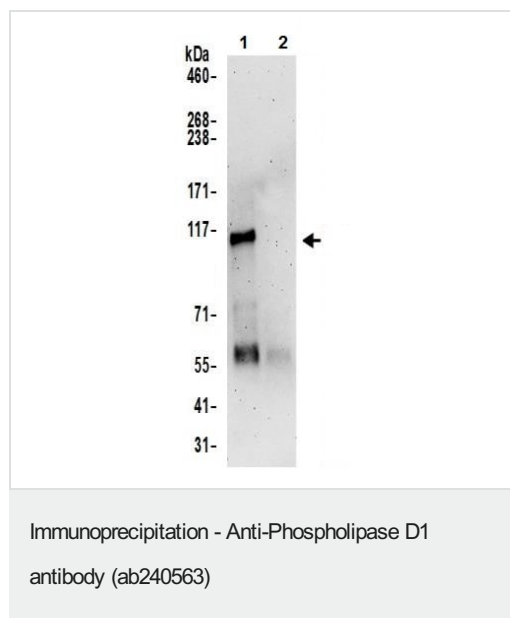
Sequence similarities

Belongs to the phospholipase D family.
Contains 1 PH domain.
Contains 2 PLD phosphodiesterase domains.
Contains 1 PX (phox homology) domain.

Cellular localization

Cytoplasm > perinuclear region. Endoplasmic reticulum membrane. Golgi apparatus membrane. Late endosome membrane.

Images



PLD1 was immunoprecipitated from 0.5 mg of HeLa (human epithelial cell line from cervix adenocarcinoma) using ab240563 at 6 µg/mg lysate. Western blot was performed on the immunoprecipitate using ab240563 at 0.4 µg/ml.

Lane 1: ab240563 IP in HeLa whole cell lysate.

Lane 2: Control IgG IP in HeLa whole cell lysate.

Detection: Chemiluminescence with an exposure time of 3 minutes.

Please note: All products are "FOR RESEARCH USE ONLY. NOT FOR USE IN DIAGNOSTIC PROCEDURES"

Our Abpromise to you: Quality guaranteed and expert technical support

- Replacement or refund for products not performing as stated on the datasheet
- Valid for 12 months from date of delivery
- Response to your inquiry within 24 hours
- We provide support in Chinese, English, French, German, Japanese and Spanish
- Extensive multi-media technical resources to help you
- We investigate all quality concerns to ensure our products perform to the highest standards

If the product does not perform as described on this datasheet, we will offer a refund or replacement. For full details of the Abpromise, please visit <https://www.abcam.com/abpromise> or contact our technical team.

Terms and conditions

- Guarantee only valid for products bought direct from Abcam or one of our authorized distributors