




Product datasheet

Anti-Phosphomevalonate kinase antibody ab65806

2 Images

Overview

Product name	Anti-Phosphomevalonate kinase antibody
Description	Rabbit polyclonal to Phosphomevalonate kinase
Host species	Rabbit
Tested applications	Suitable for: WB, IHC-P
Species reactivity	Reacts with: Rat Predicted to work with: Cow 
Immunogen	Synthetic peptide corresponding to Human Phosphomevalonate kinase aa 135-151 (internal sequence). Sequence: EQSRQQRGWVFTPGVDD Database link: Q15126 <div>  Run BLAST with  Run BLAST with </div>
Positive control	WB: Rat cardiac muscle tissue. IHC-P: Rat skeletal muscle tissue.
General notes	<p>The Life Science industry has been in the grips of a reproducibility crisis for a number of years. Abcam is leading the way in addressing this with our range of recombinant monoclonal antibodies and knockout edited cell lines for gold-standard validation. Please check that this product meets your needs before purchasing.</p> <p>If you have any questions, special requirements or concerns, please send us an inquiry and/or contact our Support team ahead of purchase. Recommended alternatives for this product can be found below, along with publications, customer reviews and Q&As</p>

Properties

Form	Liquid
Storage instructions	Shipped at 4°C. Store at +4°C short term (1-2 weeks). Upon delivery aliquot. Store at -20°C. Avoid freeze / thaw cycle.
Storage buffer	Preservatives: 0.025% Thimerosal (merthiolate), 0.025% Sodium azide Constituents: 2.5% BSA, 0.45% Sodium chloride, 0.1% Dibasic monohydrogen sodium phosphate
Purity	Immunogen affinity purified

Clonality	Polyclonal
Isotype	IgG

Applications

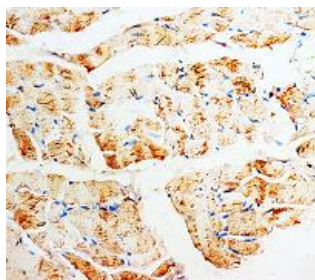
The Abpromise guarantee Our **Abpromise guarantee** covers the use of ab65806 in the following tested applications. The application notes include recommended starting dilutions; optimal dilutions/concentrations should be determined by the end user.

Application	Abreviews	Notes
WB		Use a concentration of 1 - 2 µg/ml. Predicted molecular weight: 22 kDa.
IHC-P		Use a concentration of 1 - 2 µg/ml.

Target

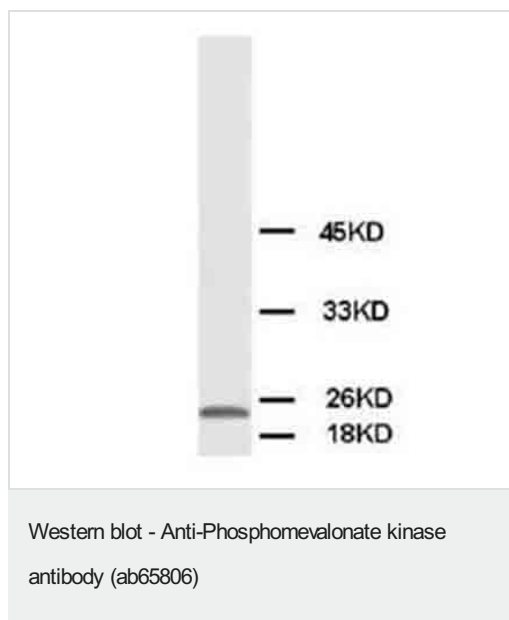
Tissue specificity	Heart, liver, skeletal muscle, kidney, and pancreas. Lower level in brain, placenta and lung.
Pathway	Isoprenoid biosynthesis; isopentenyl diphosphate biosynthesis via mevalonate pathway; isopentenyl diphosphate from (R)-mevalonate: step 2/3.
Cellular localization	Peroxisome.

Images



Paraffin embedded rat skeletal muscle tissue stained for Phosphomevalonate kinase using ab65806 at 1 µg/ml in immunohistochemical analysis.

Immunohistochemistry (Formalin/PFA-fixed paraffin-embedded sections) - Anti-Phosphomevalonate kinase antibody (ab65806)



Anti-Phosphomevalonate kinase antibody (ab65806) at 2 µg/ml + cardiac muscle tissue lysate

Predicted band size: 22 kDa

Observed band size: 22 kDa

Please note: All products are "FOR RESEARCH USE ONLY. NOT FOR USE IN DIAGNOSTIC PROCEDURES"

Our Abpromise to you: Quality guaranteed and expert technical support

- Replacement or refund for products not performing as stated on the datasheet
- Valid for 12 months from date of delivery
- Response to your inquiry within 24 hours
- We provide support in Chinese, English, French, German, Japanese and Spanish
- Extensive multi-media technical resources to help you
- We investigate all quality concerns to ensure our products perform to the highest standards

If the product does not perform as described on this datasheet, we will offer a refund or replacement. For full details of the Abpromise, please visit <https://www.abcam.com/abpromise> or contact our technical team.

Terms and conditions

- Guarantee only valid for products bought direct from Abcam or one of our authorized distributors