

Product datasheet

Anti-Phosphotyrosine antibody [RM111] ab190824

Recombinant

[1 References](#) [5 Images](#)

Overview

Product name	Anti-Phosphotyrosine antibody [RM111]
Description	Rabbit monoclonal [RM111] to Phosphotyrosine
Host species	Rabbit
Specificity	This antibody reacts to tyrosine-phosphorylated proteins. No cross reactivity with non phosphorylated tyrosine, phospho-serine, and phospho-threonine
Tested applications	Suitable for: WB, IP, ELISA, IHC-P, Flow Cyt, ChIP, ICC/IF
Species reactivity	Reacts with: Species independent
Immunogen	Chemical/ Small Molecule corresponding to Phosphotyrosine conjugated to Bovine Serum Albumin (BSA).
Positive control	Serum starved, EGF treated A431 cells; serum starved, EGF treated A431 cell lysate; EGF treated, A431 cell lysate.

Properties

Form	Liquid
Storage instructions	Shipped at 4°C. Store at +4°C short term (1-2 weeks). Upon delivery aliquot. Store at -20°C long term. Avoid freeze / thaw cycle.
Storage buffer	Preservative: 0.09% Sodium azide Constituents: 48% PBS, 1% BSA, 50% Glycerol (glycerin, glycerine)
Purity	Protein A purified
Purification notes	Purified from an animal origin-free culture supernatant.
Clonality	Monoclonal
Clone number	RM111
Isotype	IgG

Applications

The Abpromise guarantee

Our **Abpromise guarantee** covers the use of ab190824 in the following tested applications.

The application notes include recommended starting dilutions; optimal dilutions/concentrations should be determined by the end user.

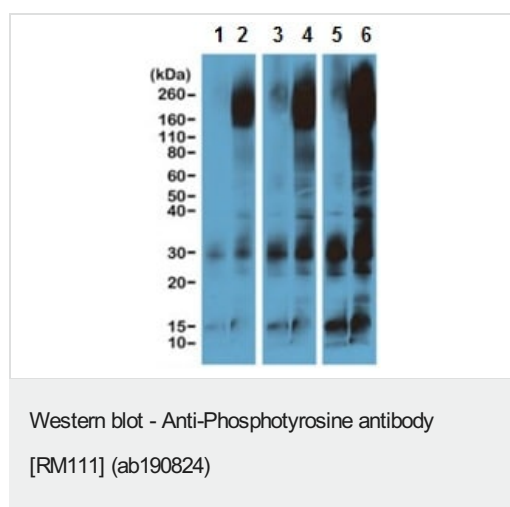
Application	Abreviews	Notes
WB		1/1000 - 1/5000.
IP		1/200 - 1/1000.
ELISA		Use at an assay dependent concentration.
IHC-P		1/200 - 1/500.
Flow Cyt		Use at an assay dependent concentration. ab172730 - Rabbit monoclonal IgG, is suitable for use as an isotype control with this antibody.
ChIP		1/200 - 1/1000.
ICC/IF		1/200 - 1/500.

Target

Relevance

The phosphorylation of specific tyrosine residues has been shown to be a primary mechanism of signal transduction during normal mitogenesis, cell cycle progression and oncogenic transformation, its role in other areas such as differentiation and gap junction communication, is a matter of active and ongoing research. Antibodies that specifically recognize phosphorylated tyrosine residues have proved to be invaluable to the study of tyrosine phosphorylated proteins and the biochemical pathways in which they function.

Images

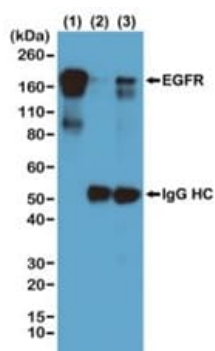


All lanes : Anti-Phosphotyrosine antibody [RM111] (ab190824) at 1/5000 dilution

Lanes 1 & 3 & 5 : Non treated serum-starved A431 cell lysate

Lanes 2 & 4 & 6 : EGF treated serum-starved A431 cell lysate

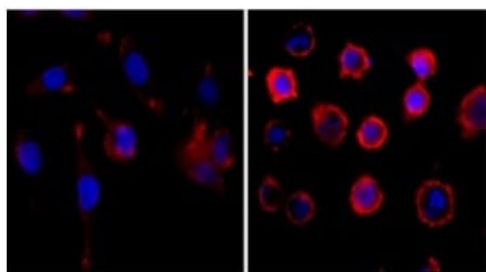
The blot was subjected twice to increasing exposure time in Lanes 3 and 4, and Lanes 5 and 6.



Immunoprecipitation - Anti-Phosphotyrosine antibody [RM111] (ab190824)

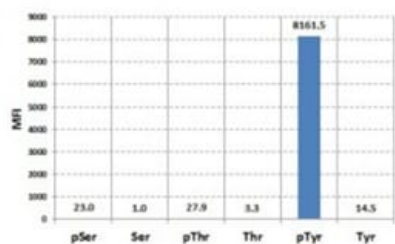
Immunoprecipitation of EGF-treated A431 cells pulling down Phosphotyrosine-EGFR by ab190824 at 1/1000 dilution; this was followed by western blot with an anti-EGFR rabbit monoclonal antibody.

- (1) Whole lysate control;
- (2) IP by rabbit IgG control;
- (3) IP by ab190824



Immunocytochemistry/ Immunofluorescence - Anti-Phosphotyrosine antibody [RM111] (ab190824)

Immunocytochemistry of serum-starved A431 cells nontreated (Left) or treated with EGF (Right) labeling Phosphotyrosine-EGFR using ab190824 at 1/500 dilution (followed by a PE conjugated secondary antibody, red) and DAPI (blue).



ELISA - Anti-Phosphotyrosine antibody [RM111] (ab190824)

Analysis of ab190824 reaction to phosphorylated or nonphosphorylated Serine, Threonine, and Tyrosine. ab190824 only reacted to phosphorylated Tyrosine.

Why choose a recombinant antibody?



Research with confidence
Consistent and reproducible results



Long-term and scalable supply
Recombinant technology



Success from the first experiment
Confirmed specificity



Ethical standards compliant
Animal-free production

Anti-Phosphotyrosine antibody [RM111] (ab190824)

Please note: All products are "FOR RESEARCH USE ONLY. NOT FOR USE IN DIAGNOSTIC PROCEDURES"

Our Abpromise to you: Quality guaranteed and expert technical support

- Replacement or refund for products not performing as stated on the datasheet
- Valid for 12 months from date of delivery
- Response to your inquiry within 24 hours
- We provide support in Chinese, English, French, German, Japanese and Spanish
- Extensive multi-media technical resources to help you
- We investigate all quality concerns to ensure our products perform to the highest standards

If the product does not perform as described on this datasheet, we will offer a refund or replacement. For full details of the Abpromise, please visit <https://www.abcam.com/abpromise> or contact our technical team.

Terms and conditions

- Guarantee only valid for products bought direct from Abcam or one of our authorized distributors