

## Product datasheet

### Anti-PHYHD1 antibody [EPR13313(B)] ab184174

Recombinant RabMAb

4 Images

#### Overview

<b>Product name</b>	Anti-PHYHD1 antibody [EPR13313(B)]
<b>Description</b>	Rabbit monoclonal [EPR13313(B)] to PHYHD1
<b>Host species</b>	Rabbit
<b>Tested applications</b>	<b>Suitable for:</b> WB, ICC/IF, Flow Cyt (Intra)
<b>Species reactivity</b>	<b>Reacts with:</b> Human
<b>Immunogen</b>	Synthetic peptide. This information is proprietary to Abcam and/or its suppliers.
<b>Positive control</b>	Human fetal liver and Human fetal kidney lysates. HepG2 cells.
<b>General notes</b>	<p>This product is a recombinant monoclonal antibody, which offers several advantages including:</p> <ul style="list-style-type: none"> <li>- High batch-to-batch consistency and reproducibility</li> <li>- Improved sensitivity and specificity</li> <li>- Long-term security of supply</li> <li>- Animal-free production</li> </ul> <p>For more information <a href="#">see here</a>.</p> <p>Our RabMAb<sup>®</sup> technology is a patented hybridoma-based technology for making rabbit monoclonal antibodies. For details on our patents, please refer to <a href="#">RabMAb<sup>®</sup> patents</a>.</p>

#### Properties

<b>Form</b>	Liquid
<b>Storage instructions</b>	Shipped at 4°C. Store at +4°C short term (1-2 weeks). Upon delivery aliquot. Store at -20°C long term. Avoid freeze / thaw cycle.
<b>Storage buffer</b>	<p>pH: 7.2</p> <p>Preservative: 0.01% Sodium azide</p> <p>Constituents: 59% PBS, 40% Glycerol (glycerin, glycerine), 0.05% BSA</p>
<b>Purity</b>	Protein A purified
<b>Clonality</b>	Monoclonal
<b>Clone number</b>	EPR13313(B)
<b>Isotype</b>	IgG

## Applications

### The Abpromise guarantee

Our **Abpromise guarantee** covers the use of ab184174 in the following tested applications.

The application notes include recommended starting dilutions; optimal dilutions/concentrations should be determined by the end user.

Application	Abreviews	Notes
WB		1/1000 - 1/10000. Predicted molecular weight: 32 kDa.
ICC/IF		1/250 - 1/500.
Flow Cyt (Intra)		1/400. <b>ab172730</b> - Rabbit monoclonal IgG, is suitable for use as an isotype control with this antibody.

## Target

### Function

Probably acts as alpha-ketoglutarate-dependent dioxygenase.

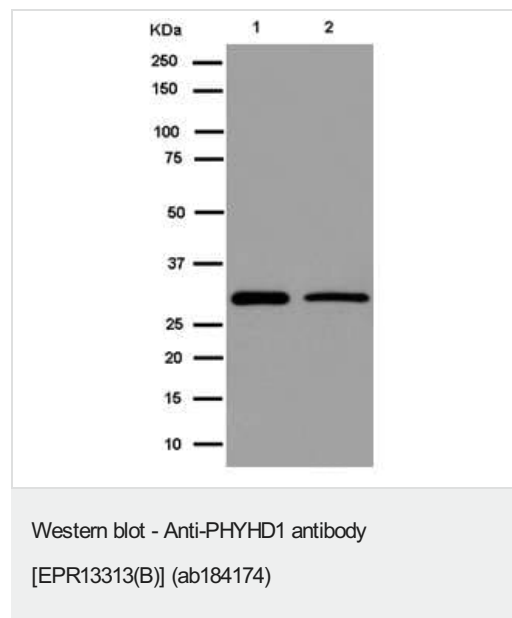
### Sequence similarities

Belongs to the PhyH family. PHYHD1 subfamily.

### Post-translational modifications

Phosphorylated upon DNA damage, probably by ATM or ATR.

## Images



**All lanes** : Anti-PHYHD1 antibody [EPR13313(B)] (ab184174) at 1/10000 dilution

**Lane 1** : Human fetal liver tissue lysate

**Lane 2** : Human fetal kidney tissue lysate

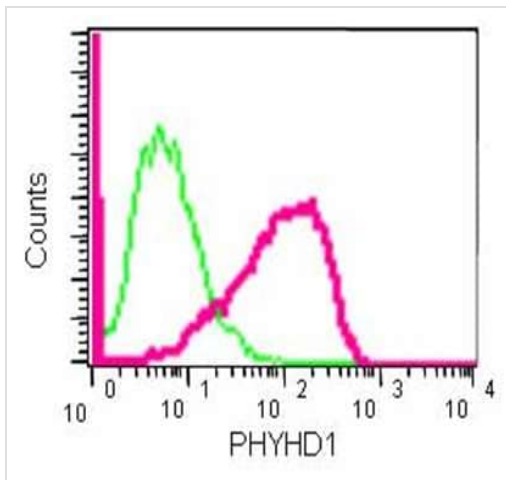
Lysates/proteins at 20 µg per lane.

### Secondary

**All lanes** : Goat Anti-Rabbit IgG, (H+L), Peroxidase conjugated at 1/1000 dilution

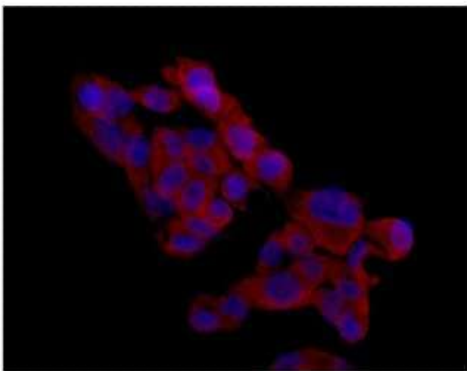
**Predicted band size:** 32 kDa

5% NFDM/TBST blocking/diluting buffer



Flow Cytometry (Intracellular) - Anti-PHYHD1 antibody [EPR13313(B)] (ab184174)

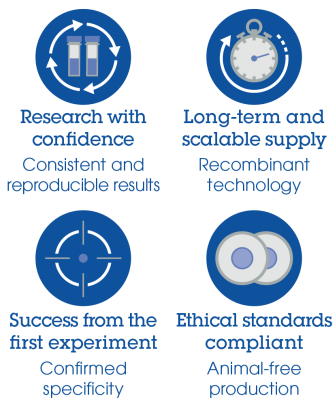
Intracellular Flow Cytometry analysis of HepG2 cells fixed in 2% paraformaldehyde labeling PHYHD1 with ab184174 at 1/400 dilution (red). Goat anti-rabbit IgG (FITC) was used at 1/150 dilution as secondary antibody. Rabbit monoclonal IgG was used as an isotype control (green).



Immunocytochemistry/ Immunofluorescence - Anti-PHYHD1 antibody [EPR13313(B)] (ab184174)

Immunofluorescent analysis of HepG2 cells fixed in 4% paraformaldehyde labeling PHYHD1 with ab184174 at 1/500 dilution. Goat anti-rabbit IgG(Alexa Fluor® 555) was used at 1/200 dilution for secondary antibody and the cells were counterstained with DAPI.

### Why choose a recombinant antibody?



Anti-PHYHD1 antibody [EPR13313(B)] (ab184174)

**Please note:** All products are "FOR RESEARCH USE ONLY. NOT FOR USE IN DIAGNOSTIC PROCEDURES"

### **Our Abpromise to you: Quality guaranteed and expert technical support**

---

- Replacement or refund for products not performing as stated on the datasheet
- Valid for 12 months from date of delivery
- Response to your inquiry within 24 hours
  
- We provide support in Chinese, English, French, German, Japanese and Spanish
- Extensive multi-media technical resources to help you
- We investigate all quality concerns to ensure our products perform to the highest standards

If the product does not perform as described on this datasheet, we will offer a refund or replacement. For full details of the Abpromise, please visit <https://www.abcam.com/abpromise> or contact our technical team.

### **Terms and conditions**

---

- Guarantee only valid for products bought direct from Abcam or one of our authorized distributors