


Product datasheet

Anti-PI 3 Kinase catalytic subunit alpha/PIK3CA antibody [SP139], prediluted ab135371

Recombinant RabMAb

[1 References](#) [2 Images](#)

Overview

| | |
|----------------------------|---|
| Product name | Anti-PI 3 Kinase catalytic subunit alpha/PIK3CA antibody [SP139], prediluted |
| Description | Rabbit monoclonal [SP139] to PI 3 Kinase catalytic subunit alpha/PIK3CA, prediluted |
| Host species | Rabbit |
| Tested applications | Suitable for: IHC-P |
| Species reactivity | Reacts with: Human Predicted to work with: Mouse, Chicken, Cow  |
| Immunogen | Synthetic peptide within Human PI 3 Kinase catalytic subunit alpha/PIK3CA aa 500-600 (internal sequence). The exact sequence is proprietary. Database link: P42336 |
| Positive control | Human breast carcinoma tissue |
| General notes | This product is a recombinant monoclonal antibody, which offers several advantages including: <ul style="list-style-type: none"> - High batch-to-batch consistency and reproducibility - Improved sensitivity and specificity - Long-term security of supply - Animal-free production For more information see here . This product is FOR RESEARCH USE ONLY. For commercial use, please contact partnerships@abcam.com. |

Properties

| | |
|-----------------------------|---|
| Form | Liquid |
| Storage instructions | Shipped at 4°C. Upon delivery aliquot and store at -20°C. Avoid freeze / thaw cycles. |
| Storage buffer | pH: 7.60 Preservative: 0.1% Sodium azide Constituents: Tris buffered saline, 1% BSA |
| Purity | Protein A/G purified |
| Purification notes | Purified from TCS by protein A/G. |

| | |
|---------------------|------------|
| Clonality | Monoclonal |
| Clone number | SP139 |
| Isotype | IgG |

Applications

The Abpromise guarantee Our **Abpromise guarantee** covers the use of ab135371 in the following tested applications.

The application notes include recommended starting dilutions; optimal dilutions/concentrations should be determined by the end user.

| Application | Abreviews | Notes |
|-------------|-----------|---|
| IHC-P | | 1/1. Antigen Retrieval: Boil tissue section in 1mM EDTA buffer, pH 8.0 for 10 min followed by cooling at room temperature for 20 min. |

Target

Function Phosphorylates PtdIns, PtdIns4P and PtdIns(4,5)P2 with a preference for PtdIns(4,5)P2.

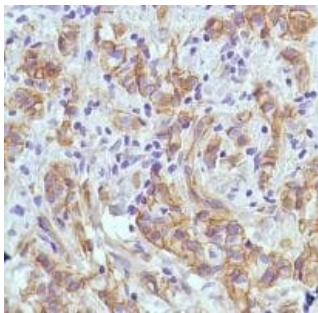
Involvement in disease Defects in PIK3CA are associated with colorectal cancer (CRC) [MIM:114500]. Defects in PIK3CA are a cause of susceptibility to breast cancer (BC) [MIM:114480]. A common malignancy originating from breast epithelial tissue. Breast neoplasms can be distinguished by their histologic pattern. Invasive ductal carcinoma is by far the most common type. Breast cancer is etiologically and genetically heterogeneous. Important genetic factors have been indicated by familial occurrence and bilateral involvement. Mutations at more than one locus can be involved in different families or even in the same case.

Defects in PIK3CA are a cause of susceptibility to ovarian cancer (OC) [MIM:167000]. Ovarian cancer common malignancy originating from ovarian tissue. Although many histologic types of ovarian neoplasms have been described, epithelial ovarian carcinoma is the most common form. Ovarian cancers are often asymptomatic and the recognized signs and symptoms, even of late-stage disease, are vague. Consequently, most patients are diagnosed with advanced disease.

Defects in PIK3CA may underlie hepatocellular carcinoma (HCC) [MIM:114550]. Defects in PIK3CA are a cause of keratosis seborrheic (KERSEB) [MIM:182000]. A common benign skin tumor. Seborrheic keratoses usually begin with the appearance of one or more sharply defined, light brown, flat macules. The lesions may be sparse or numerous. As they initially grow, they develop a velvety to finely verrucous surface, followed by an uneven warty surface with multiple plugged follicles and a dull or lackluster appearance.

Sequence similarities Belongs to the PI3/PI4-kinase family.
Contains 1 C2 domain.
Contains 1 PI3K/PI4K domain.

Images



Immunohistochemical analysis of paraffin embedded Human breast carcinoma tissue labelling PI 3 Kinase catalytic subunit alpha/PIK3CA with ab135371.

Immunohistochemistry (Formalin/PFA-fixed paraffin-embedded sections) - Anti-PI 3 Kinase catalytic subunit alpha/PIK3CA antibody [SP139], prediluted (ab135371)

Why choose a recombinant antibody?



Research with confidence
Consistent and reproducible results



Long-term and scalable supply
Recombinant technology



Success from the first experiment
Confirmed specificity



Ethical standards compliant
Animal-free production

Anti-PI 3 Kinase catalytic subunit alpha/PIK3CA antibody [SP139], prediluted (ab135371)

Please note: All products are "FOR RESEARCH USE ONLY. NOT FOR USE IN DIAGNOSTIC PROCEDURES"

Our Abpromise to you: Quality guaranteed and expert technical support

- Replacement or refund for products not performing as stated on the datasheet
- Valid for 12 months from date of delivery
- Response to your inquiry within 24 hours
- We provide support in Chinese, English, French, German, Japanese and Spanish
- Extensive multi-media technical resources to help you
- We investigate all quality concerns to ensure our products perform to the highest standards

If the product does not perform as described on this datasheet, we will offer a refund or replacement. For full details of the Abpromise,

please visit <https://www.abcam.com/abpromise> or contact our technical team.

Terms and conditions

- Guarantee only valid for products bought direct from Abcam or one of our authorized distributors