

## Product datasheet

# Anti-PI 3 Kinase catalytic subunit gamma/PI3K-gamma antibody ab154598

[24 References](#) [4 Images](#)

### Overview

<b>Product name</b>	Anti-PI 3 Kinase catalytic subunit gamma/PI3K-gamma antibody
<b>Description</b>	Rabbit polyclonal to PI 3 Kinase catalytic subunit gamma/PI3K-gamma
<b>Host species</b>	Rabbit
<b>Tested applications</b>	<b>Suitable for:</b> WB, IHC-P
<b>Species reactivity</b>	<b>Reacts with:</b> Mouse, Rat, Human
<b>Immunogen</b>	Synthetic peptide corresponding to Human PI 3 Kinase catalytic subunit gamma/PI3K-gamma aa 1041-1102 (C terminal). Database link: <a href="#">P48736</a>
<b>Positive control</b>	WB: Transfected HEK-293T, Neuro 2A, RAW264.7, C8D30 and PC-12 cell lysate; IHC-P: Human breast cancer tissue.
<b>General notes</b>	<p>The Life Science industry has been in the grips of a reproducibility crisis for a number of years. Abcam is leading the way in addressing this with our range of recombinant monoclonal antibodies and knockout edited cell lines for gold-standard validation. Please check that this product meets your needs before purchasing.</p> <p>If you have any questions, special requirements or concerns, please send us an inquiry and/or contact our Support team ahead of purchase. Recommended alternatives for this product can be found below, along with publications, customer reviews and Q&amp;As</p>

### Properties

<b>Form</b>	Liquid
<b>Storage instructions</b>	Shipped at 4°C. Store at +4°C short term (1-2 weeks). Upon delivery aliquot. Store at -20°C or -80°C. Avoid freeze / thaw cycle.
<b>Storage buffer</b>	pH: 7.00 Preservative: 0.01% Thimerosal (merthiolate) Constituents: 59.99% PBS, 40% Glycerol (glycerin, glycerine)
<b>Purity</b>	Immunogen affinity purified
<b>Clonality</b>	Polyclonal
<b>Isotype</b>	IgG

## Applications

### The Abpromise guarantee

Our **Abpromise guarantee** covers the use of ab154598 in the following tested applications.

The application notes include recommended starting dilutions; optimal dilutions/concentrations should be determined by the end user.

Application	Abreviews	Notes
WB		1/500 - 1/3000. Predicted molecular weight: 126 kDa.
IHC-P		1/100 - 1/1000. Perform heat mediated antigen retrieval before commencing with IHC staining protocol using 10mM Citrate buffer (pH6.0) or Tris-EDTA buffer (pH8.0).

## Target

### Function

3-phosphorylates the cellular phosphoinositide PtdIns-4,5-biphosphate (PtdIns(4,5)P<sub>2</sub>) to produce PtdIns-3, 4,5-triiphosphate (PtdIns(3,4,5)P<sub>3</sub>). Links G-protein coupled receptor activation to the secondary messenger PtdIns(3,4,5)P<sub>3</sub> production.

### Tissue specificity

Pancreas, skeletal muscle, liver and heart.

### Pathway

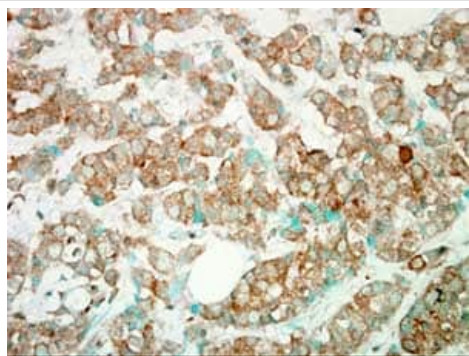
Phospholipid metabolism; phosphatidylinositol phosphate biosynthesis.

### Sequence similarities

Belongs to the PI3K/PI4-kinase family.

Contains 1 PI3K/PI4K domain.

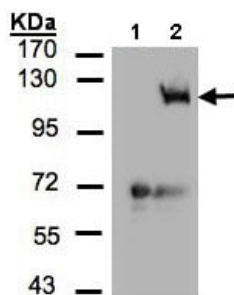
## Images



Immunohistochemical analysis of paraffin-embedded human breast cancer tissue staining PI 3 Kinase catalytic subunit gamma with ab154598 at 1/100 dilution.

Antigen Retrieval: EDTA based buffer, pH 8.0, 15min.

Immunohistochemistry (Formalin/PFA-fixed paraffin-embedded sections) - Anti-PI 3 Kinase catalytic subunit gamma/PI3K-gamma antibody (ab154598)



Western blot - Anti-PI 3 Kinase catalytic subunit gamma/PI3K-gamma antibody (ab154598)

**All lanes :** Anti-PI 3 Kinase catalytic subunit gamma/PI3K-gamma antibody (ab154598) at 1/500 dilution

**Lane 1 :** Non-transfected HEK-293T (human epithelial cell line from embryonic kidney transformed with large T antigen) whole cell lysate

**Lane 2 :** PI3K-gamma-transfected HEK-293T whole cell lysate

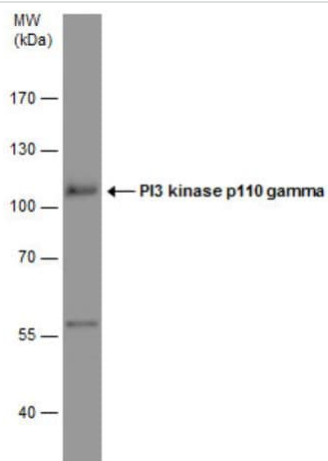
Lysates/proteins at 30 µg per lane.

### Secondary

**All lanes :** HRP-conjugated anti-rabbit IgG antibody

**Predicted band size:** 126 kDa

### 7.5% SDS PAGE

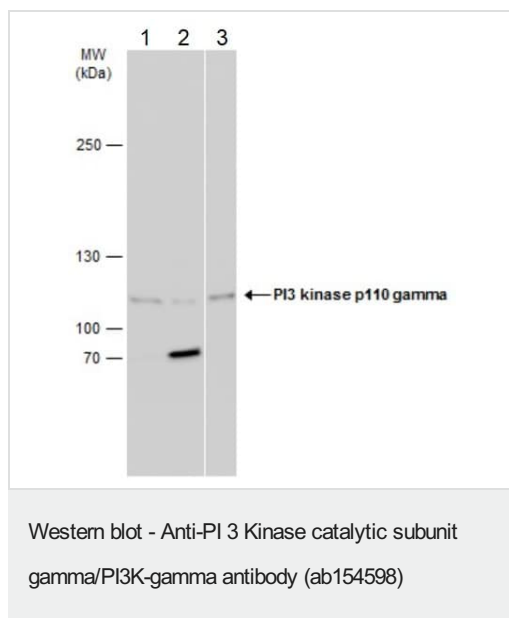


Western blot - Anti-PI 3 Kinase catalytic subunit gamma/PI3K-gamma antibody (ab154598)

Anti-PI 3 Kinase catalytic subunit gamma/PI3K-gamma antibody (ab154598) at 1/1000 dilution + PC-12 (rat adrenal gland pheochromocytoma cell line) whole cell lysate at 30 µg

**Predicted band size:** 126 kDa

### 7.5% SDS-PAGE



**All lanes :** Anti-PI 3 Kinase catalytic subunit gamma/PI3K-gamma antibody (ab154598) at 1/500 dilution

**Lane 1 :** Neuro-2a (mouse neuroblastoma cell line) whole cell lysate

**Lane 2 :** RAW 264.7 (mouse macrophage cell line transformed with Abelson murine leukemia virus) whole cell lysate

**Lane 3 :** C8-D30 (mouse astrocyte type III cerebellum cell line) whole cell lysate

Lysates/proteins at 30 µg per lane.

### Secondary

**All lanes :** HRP-conjugated anti-rabbit IgG antibody

**Predicted band size:** 126 kDa

5% SDS-PAGE

**Please note:** All products are "FOR RESEARCH USE ONLY. NOT FOR USE IN DIAGNOSTIC PROCEDURES"

### Our Abpromise to you: Quality guaranteed and expert technical support

- Replacement or refund for products not performing as stated on the datasheet
- Valid for 12 months from date of delivery
- Response to your inquiry within 24 hours
- We provide support in Chinese, English, French, German, Japanese and Spanish
- Extensive multi-media technical resources to help you
- We investigate all quality concerns to ensure our products perform to the highest standards

If the product does not perform as described on this datasheet, we will offer a refund or replacement. For full details of the Abpromise, please visit <https://www.abcam.com/abpromise> or contact our technical team.

### Terms and conditions

- Guarantee only valid for products bought direct from Abcam or one of our authorized distributors