


Anti-PI 3 Kinase p55 gamma antibody ab97862

[1 Abreviews](#) [3 References](#) [2 Images](#)

Overview

Product name	Anti-PI 3 Kinase p55 gamma antibody
Description	Rabbit polyclonal to PI 3 Kinase p55 gamma
Host species	Rabbit
Tested applications	Suitable for: IHC-P, WB
Species reactivity	Reacts with: Human Predicted to work with: Mouse, Rat, Cow 
Immunogen	Recombinant fragment, corresponding to a sequence within amino acids 242-437 of Human PI 3 Kinase p55 gamma (AAH21622).
Positive control	293T, H1299, HeLaS3, HepG2, MOLT4 and Raji cell lysates; A431 whole cell lysate. SAS xenograft tissue.
General notes	<p>The Life Science industry has been in the grips of a reproducibility crisis for a number of years. Abcam is leading the way in addressing this with our range of recombinant monoclonal antibodies and knockout edited cell lines for gold-standard validation. Please check that this product meets your needs before purchasing.</p> <p>If you have any questions, special requirements or concerns, please send us an inquiry and/or contact our Support team ahead of purchase. Recommended alternatives for this product can be found below, along with publications, customer reviews and Q&As</p>

Properties

Form	Liquid
Storage instructions	Shipped at 4°C. Upon delivery aliquot. Store at -20°C or -80°C. Avoid freeze / thaw cycle.
Storage buffer	pH: 7.00 Preservative: 0.01% Thimerosal (merthiolate) Constituents: 1.21% Tris, 0.75% Glycine, 10% Glycerol (glycerin, glycerine)
Purity	Immunogen affinity purified
Clonality	Polyclonal
Isotype	IgG

Applications

The Abpromise guarantee

Our **Abpromise guarantee** covers the use of ab97862 in the following tested applications.

The application notes include recommended starting dilutions; optimal dilutions/concentrations should be determined by the end user.

Application	Abreviews	Notes
IHC-P		1/100 - 1/500.
WB		1/500 - 1/3000. Predicted molecular weight: 54 kDa.

Target

Function

Binds to activated (phosphorylated) protein-tyrosine kinases through its SH2 domain and regulates their kinase activity. During insulin stimulation, it also binds to IRS-1.

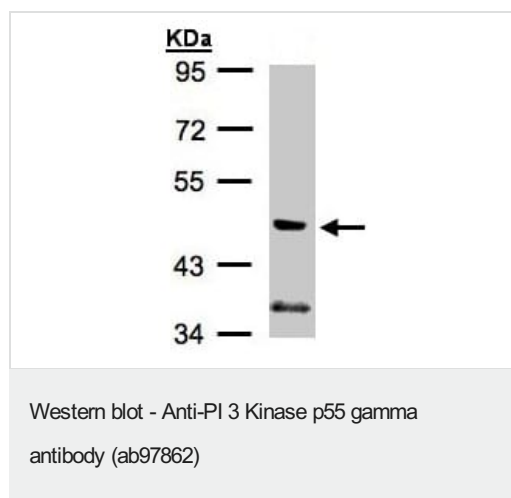
Tissue specificity

Highest levels in brain and testis. Lower levels in adipose tissue, kidney, heart, lung and skeletal muscle.

Sequence similarities

Belongs to the PI3K p85 subunit family.
Contains 2 SH2 domains.

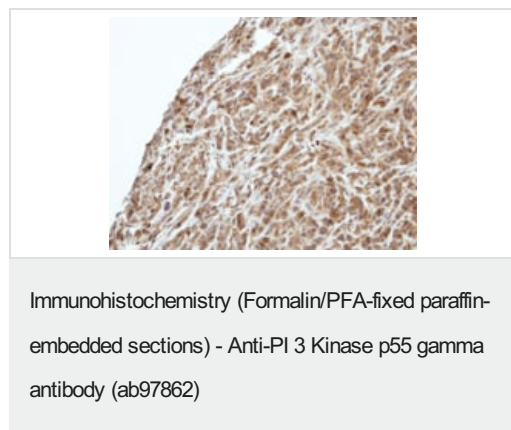
Images



Anti-PI 3 Kinase p55 gamma antibody (ab97862) at 1/1000 dilution
+ A431 whole cell lysate at 30 µg

Predicted band size: 54 kDa

7.5% SDS-PAGE.



ab97862 at 1/500 dilution staining PI 3 Kinase p55 gamma in SAS xenograft by Immunohistochemistry, Paraffin-embedded tissue.

Please note: All products are "FOR RESEARCH USE ONLY. NOT FOR USE IN DIAGNOSTIC PROCEDURES"

Our Abpromise to you: Quality guaranteed and expert technical support

- Replacement or refund for products not performing as stated on the datasheet
- Valid for 12 months from date of delivery
- Response to your inquiry within 24 hours

- We provide support in Chinese, English, French, German, Japanese and Spanish
- Extensive multi-media technical resources to help you
- We investigate all quality concerns to ensure our products perform to the highest standards

If the product does not perform as described on this datasheet, we will offer a refund or replacement. For full details of the Abpromise, please visit <https://www.abcam.com/abpromise> or contact our technical team.

Terms and conditions

- Guarantee only valid for products bought direct from Abcam or one of our authorized distributors