

## Product datasheet

# Anti-PI 3 Kinase p85 alpha + Gamma antibody ab74136

★★★★☆ [2 Abreviews](#) [12 References](#) [4 Images](#)

### Overview

<b>Product name</b>	Anti-PI 3 Kinase p85 alpha + Gamma antibody
<b>Description</b>	Rabbit polyclonal to PI 3 Kinase p85 alpha + Gamma
<b>Host species</b>	Rabbit
<b>Specificity</b>	PI3 kinase p85 alpha and gamma.
<b>Tested applications</b>	<b>Suitable for:</b> WB, IHC-P, ICC/IF
<b>Species reactivity</b>	<b>Reacts with:</b> Human, African green monkey
<b>Immunogen</b>	Synthetic non-phosphopeptide derived from human PI 3 Kinase p85 alpha around the phosphorylation site of tyrosine 468 (R-L-Y <sup>P</sup> -E-E).
<b>General notes</b>	<p>The Life Science industry has been in the grips of a reproducibility crisis for a number of years. Abcam is leading the way in addressing this with our range of recombinant monoclonal antibodies and knockout edited cell lines for gold-standard validation. Please check that this product meets your needs before purchasing.</p> <p>If you have any questions, special requirements or concerns, please send us an inquiry and/or contact our Support team ahead of purchase. Recommended alternatives for this product can be found below, along with publications, customer reviews and Q&amp;As</p>

### Properties

<b>Form</b>	Liquid
<b>Storage instructions</b>	Shipped at 4°C. Store at -20°C. Stable for 12 months at -20°C.
<b>Storage buffer</b>	<p>pH: 7.40</p> <p>Preservative: 0.02% Sodium azide</p> <p>Constituents: 50% Glycerol (glycerin, glycerine), 0.87% Sodium chloride, PBS</p> <p>Without Mg<sup>2+</sup> and Ca<sup>2+</sup></p>
<b>Purity</b>	Immunogen affinity purified
<b>Clonality</b>	Polyclonal
<b>Isotype</b>	IgG

## Applications

### The Abpromise guarantee

Our **Abpromise guarantee** covers the use of ab74136 in the following tested applications.

The application notes include recommended starting dilutions; optimal dilutions/concentrations should be determined by the end user.

Application	Abreviews	Notes
WB	★ ★ ★ ★ ★ (1)	1/500 - 1/1000. Predicted molecular weight: 84 kDa.
IHC-P		1/50 - 1/100.
ICC/IF	★ ★ ★ ★ ★ (1)	1/500.

## Target

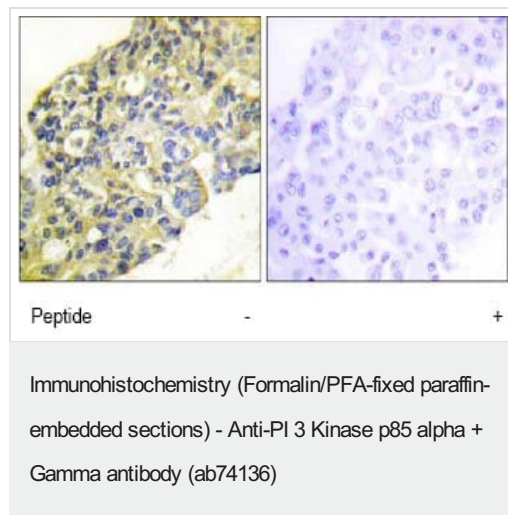
### Relevance

The enzyme phosphatidylinositol 3 kinase (PI3 kinase) is a lipid kinase that generates phosphatidylinositol 3, 4, 5-triphosphate in response to receptor activation in many signal transduction pathways. Class IA PI3Ks exist as a heterodimer of a catalytic 110 kDa (p110) and a regulatory p85 subunit (e.g. p85 alpha). p85 alpha is an adaptor molecule that regulates the activity of the catalytic p110 subunit by binding to phosphorylated receptor tyrosine kinases (RTKs) through its SH2 domain and mediating the interaction between p110 and the plasma membrane. p85 alpha is necessary for insulin-stimulated increase in glucose uptake and glycogen synthesis in insulin-sensitive tissues.

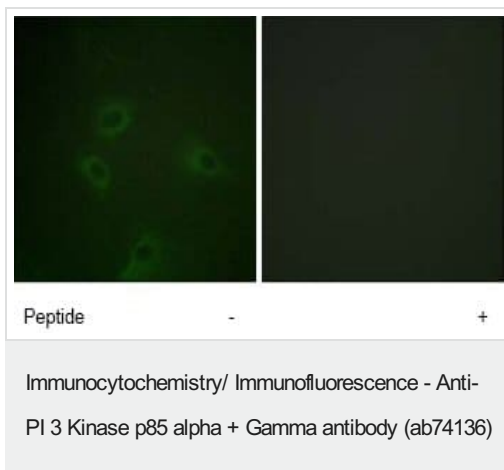
### Cellular localization

Cytoplasmic

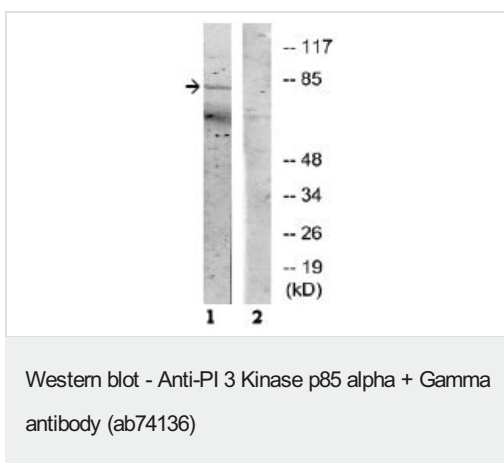
## Images



Immunohistochemical analysis of paraffin-embedded human breast carcinoma tissue using ab74136, at 1/50 dilution, in the presence (right panel) or absence (left panel) of immunising peptide.



Immunofluorescence analysis of HeLa cells using ab74136, at 1/500 dilution, in the presence (right panel) or absence (left panel) of immunising peptide.



**All lanes :** Anti-PI 3 Kinase p85 alpha + Gamma antibody (ab74136) at 1/500 dilution

**Lane 1 :** Extracts from COS7 cells, treated with  $H_2O_2$  (100 $\mu$ M, 30mins)

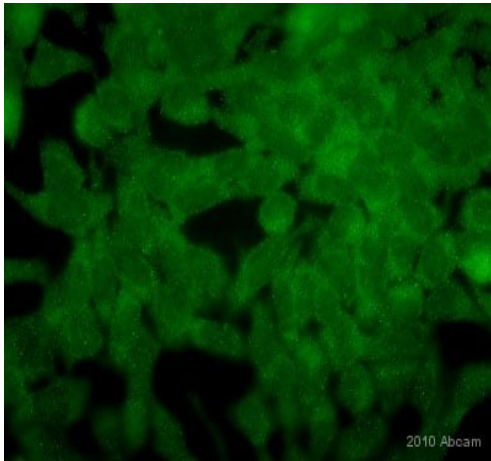
**Lane 2 :** Extracts from COS7 cells, treated with  $H_2O_2$  (100 $\mu$ M, 30mins) with immunising peptide at 5  $\mu$ g

Lysates/proteins at 5  $\mu$ g per lane.

**Predicted band size:** 84 kDa

**Observed band size:** 84 kDa

**Additional bands at:** 70 kDa. We are unsure as to the identity of these extra bands.



Immunocytochemistry/ Immunofluorescence - Anti-PI 3 Kinase p85 alpha + Gamma antibody (ab74136)

ab74136 at 1/200 dilution staining PI 3 Kinase p85 alpha + Gamma in mouse embryonic stem cells by Immunocytochemistry/ Immunofluorescence. Cells were fixed in paraformaldehyde, permeabilized in 1:1 methanol, acetone and blocked in 1% serum for 30 minutes at 25°C. The primary antibody was used at 1/100 dilution in Goat block dilution buffer and incubated with sample at 25°C for 1 hours. An Alexa Fluor® 488 conjugated Goat polyclonal to rabbit IgG (H+L) was used as secondary at 1/500 dilution.

**Please note:** All products are "FOR RESEARCH USE ONLY. NOT FOR USE IN DIAGNOSTIC PROCEDURES"

### Our Abpromise to you: Quality guaranteed and expert technical support

---

- Replacement or refund for products not performing as stated on the datasheet
- Valid for 12 months from date of delivery
- Response to your inquiry within 24 hours
- We provide support in Chinese, English, French, German, Japanese and Spanish
- Extensive multi-media technical resources to help you
- We investigate all quality concerns to ensure our products perform to the highest standards

If the product does not perform as described on this datasheet, we will offer a refund or replacement. For full details of the Abpromise, please visit <https://www.abcam.com/abpromise> or contact our technical team.

### Terms and conditions

---

- Guarantee only valid for products bought direct from Abcam or one of our authorized distributors