


Product datasheet

Anti-PI 3 Kinase p85 alpha antibody [EP380Y] ab40755

KO **VALIDATED** Recombinant RabMAb[®]

★★★★☆ [3 Abreviews](#) [36 References](#) [3 Images](#)

Overview

Product name	Anti-PI 3 Kinase p85 alpha antibody [EP380Y]
Description	Rabbit monoclonal [EP380Y] to PI 3 Kinase p85 alpha
Host species	Rabbit
Tested applications	Suitable for: WB
Species reactivity	Reacts with: Human Predicted to work with: Mouse, Rat 
Immunogen	Synthetic peptide within Human PI 3 Kinase p85 alpha aa 700-800 (C terminal). The exact sequence is proprietary.
Positive control	A431, MCF7 or Raji cells lysate, HeLa cells
General notes	<p>This product is a recombinant monoclonal antibody, which offers several advantages including:</p> <ul style="list-style-type: none"> - High batch-to-batch consistency and reproducibility - Improved sensitivity and specificity - Long-term security of supply - Animal-free production <p>For more information see here.</p> <p>Our RabMAb[®] technology is a patented hybridoma-based technology for making rabbit monoclonal antibodies. For details on our patents, please refer to RabMAb[®] patents.</p>

Properties

Form	Liquid
Storage instructions	Shipped at 4°C. Upon delivery aliquot and store at -20°C. Avoid freeze / thaw cycles.
Storage buffer	<p>pH: 7.20</p> <p>Preservative: 0.05% Sodium azide</p> <p>Constituents: 40% Glycerol (glycerin, glycerine), 9.85% Tris glycine, 50% Tissue culture supernatant</p>
Purity	Protein A purified
Clonality	Monoclonal
Clone number	EP380Y

Isotype

IgG

Applications

The Abpromise guarantee

Our **Abpromise guarantee** covers the use of ab40755 in the following tested applications.

The application notes include recommended starting dilutions; optimal dilutions/concentrations should be determined by the end user.

Application	Abreviews	Notes
WB	★★★★★ (3)	1/1000 - 1/2000. Detects a band of approximately 85 kDa (predicted molecular weight: 85 kDa).

Target

Function

Binds to activated (phosphorylated) protein-Tyr kinases, through its SH2 domain, and acts as an adapter, mediating the association of the p110 catalytic unit to the plasma membrane. Necessary for the insulin-stimulated increase in glucose uptake and glycogen synthesis in insulin-sensitive tissues.

Tissue specificity

Isoform 2 is expressed in skeletal muscle and brain, and at lower levels in kidney and cardiac muscle. Isoform 2 and isoform 4 are present in skeletal muscle (at protein level).

Sequence similarities

Belongs to the PI3K p85 subunit family.
Contains 1 Rho-GAP domain.
Contains 2 SH2 domains.
Contains 1 SH3 domain.

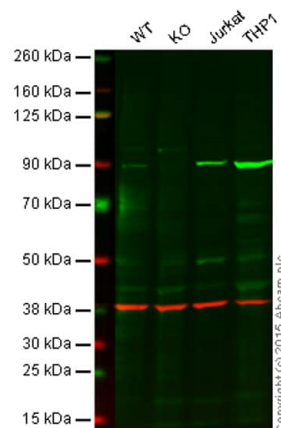
Domain

The SH3 domain mediates the binding to CBLB, and to HIV-1 Nef.

Post-translational modifications

Polyubiquitinated in T-cells by CBLB; which does not promote proteasomal degradation but impairs association with CD28 and CD3Z upon T-cell activation.
Phosphorylated. Dephosphorylated by PTPRJ.

Images



Western blot - Anti-PI 3 Kinase p85 alpha antibody [EP380Y] (ab40755)

Lane 1: Wild-type HAP1 cell lysate (20 µg)

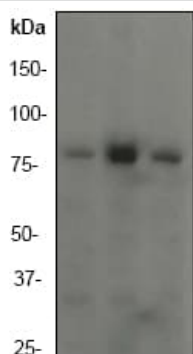
Lane 2: PI 3 Kinase p85 alpha knockout HAP1 cell lysate (20 µg)

Lane 3: Jurkat cell lysate (20 µg)

Lane 4: THP1 cell lysate (20 µg)

Lanes 1 - 4: Merged signal (red and green). Green - ab40755 observed at 90 kDa. Red - loading control, **ab181602**, observed at 37 kDa.

ab40755 was shown to recognize PI 3 Kinase p85 alpha in wild-type HAP1 cells along with additional cross-reactive bands. No Band was observed when PI 3 Kinase p85 alpha knockout samples were examined. Wild-type and PI 3 Kinase p85 alpha knockout samples were subjected to SDS-PAGE. ab40755 and **ab181602** (loading control to GAPDH) were diluted 1/1000 and 1/2000 respectively and incubated overnight at 4°C. Blots were developed with Goat anti-Rabbit IgG H&L (IRDye® 800CW) preadsorbed (**ab216773**) and Goat anti-Mouse IgG H&L (IRDye® 680RD) preadsorbed (**ab216776**) secondary antibodies at 1/10,000 dilution for 1 hour at room temperature before imaging.



Western blot - Anti-PI 3 Kinase p85 alpha antibody [EP380Y] (ab40755)

All lanes : Anti-PI 3 Kinase p85 alpha antibody [EP380Y] (ab40755) at 1/2000 dilution

Lane 1 : A431 cell lysate

Lane 2 : MCF-7 cell lysate

Lane 3 : Raji cell lysate

Lysates/proteins at 10 µg per lane.

Predicted band size: 85 kDa

Observed band size: 85 kDa

Why choose a recombinant antibody?



Research with confidence
Consistent and reproducible results



Long-term and scalable supply
Recombinant technology



Success from the first experiment
Confirmed specificity



Ethical standards compliant
Animal-free production

Anti-PI 3 Kinase p85 alpha antibody [EP380Y]
(ab40755)

Please note: All products are "FOR RESEARCH USE ONLY. NOT FOR USE IN DIAGNOSTIC PROCEDURES"

Our Abpromise to you: Quality guaranteed and expert technical support

- Replacement or refund for products not performing as stated on the datasheet
- Valid for 12 months from date of delivery
- Response to your inquiry within 24 hours
- We provide support in Chinese, English, French, German, Japanese and Spanish
- Extensive multi-media technical resources to help you
- We investigate all quality concerns to ensure our products perform to the highest standards

If the product does not perform as described on this datasheet, we will offer a refund or replacement. For full details of the Abpromise, please visit <https://www.abcam.com/abpromise> or contact our technical team.

Terms and conditions

- Guarantee only valid for products bought direct from Abcam or one of our authorized distributors