


Product datasheet

Anti-PI3 Kinase p110 beta antibody ab232997

[3 References](#) [9 Images](#)

Overview

Product name	Anti-PI3 Kinase p110 beta antibody
Description	Rabbit polyclonal to PI3 Kinase p110 beta
Host species	Rabbit
Tested applications	Suitable for: IHC-P, WB, ICC/IF
Species reactivity	Reacts with: Mouse, Human, Pig Predicted to work with: Rat 
Immunogen	Recombinant fragment (His-tag) corresponding to Human PI3 Kinase p110 beta aa 800 to the C-terminus. (Expressed in E.coli). Database link: P42338 Run BLAST with Run BLAST with
Positive control	WB: Pig cerebrum lysate; Mouse parotid gland lysate; Recombinant human PI3 Kinase p110 beta protein. IHC-P: Human prostate, liver cancer, liver, kidney and stomach tissue. ICC/IF: HepG2 cells.
General notes	<p>The Life Science industry has been in the grips of a reproducibility crisis for a number of years. Abcam is leading the way in addressing this with our range of recombinant monoclonal antibodies and knockout edited cell lines for gold-standard validation. Please check that this product meets your needs before purchasing.</p> <p>If you have any questions, special requirements or concerns, please send us an inquiry and/or contact our Support team ahead of purchase. Recommended alternatives for this product can be found below, along with publications, customer reviews and Q&As</p>

Properties

Form	Liquid
Storage instructions	Shipped at 4°C. Store at +4°C short term (1-2 weeks). Upon delivery aliquot. Store at -20°C long term. Avoid freeze / thaw cycle.
Storage buffer	pH: 7.40 Preservative: 0.011% Proclin 300 Constituents: 55.77% Glycerol (glycerin, glycerine), 44.219% PBS
Purity	Protein A purified
Purification notes	Antigen-specific affinity chromatography followed by Protein A affinity chromatography.

Clonality	Polyclonal
Isotype	IgG

Applications

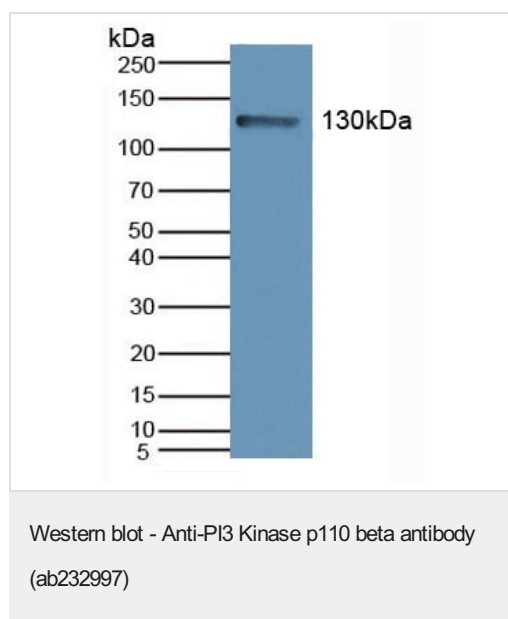
The Abpromise guarantee Our **Abpromise guarantee** covers the use of ab232997 in the following tested applications. The application notes include recommended starting dilutions; optimal dilutions/concentrations should be determined by the end user.

Application	Abreviews	Notes
IHC-P		Use a concentration of 5 - 20 µg/ml.
WB		Use a concentration of 0.5 - 2 µg/ml.
ICC/IF		Use a concentration of 5 - 20 µg/ml.

Target

Function	Phosphorylates PtdIns, PtdIns4P and PtdIns(4,5)P2 with a preference for PtdIns(4,5)P2.
Tissue specificity	Expressed ubiquitously.
Pathway	Phospholipid metabolism; phosphatidylinositol phosphate biosynthesis.
Sequence similarities	Belongs to the PI3/PI4-kinase family. Contains 1 PI3K/PI4K domain.

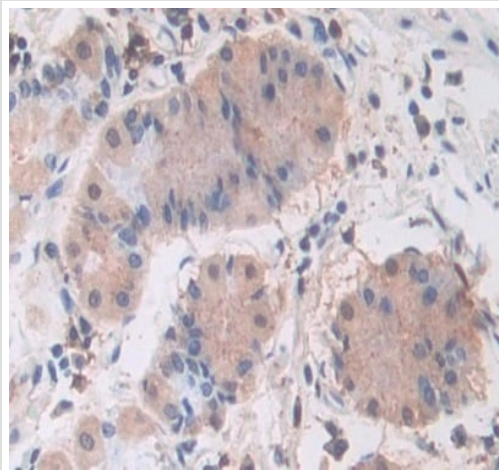
Images



Anti-PI3 Kinase p110 beta antibody (ab232997) at 2 µg/ml +
Mouse parotid gland lysate

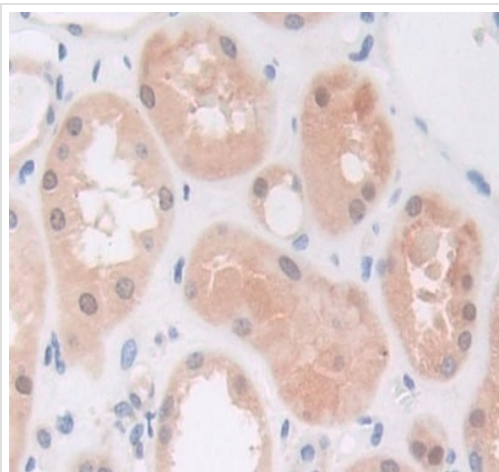
Secondary

HRP-Linked Guinea pig Anti-Rabbit at 1/1000 dilution



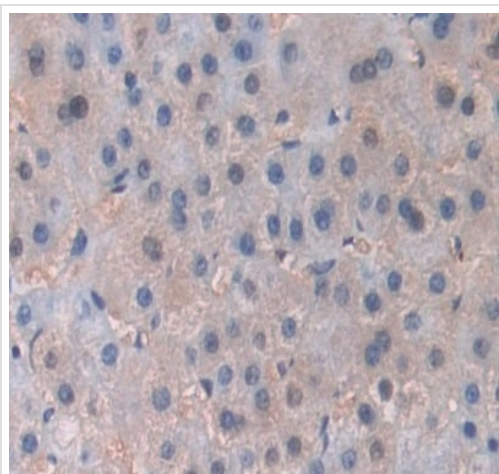
Formalin-fixed, paraffin-embedded human stomach tissue stained for PI3 Kinase p110 beta using ab232997 at 30 µg/ml in immunohistochemical analysis. DAB staining.

Immunohistochemistry (Formalin/PFA-fixed paraffin-embedded sections) - Anti-PI3 Kinase p110 beta antibody (ab232997)



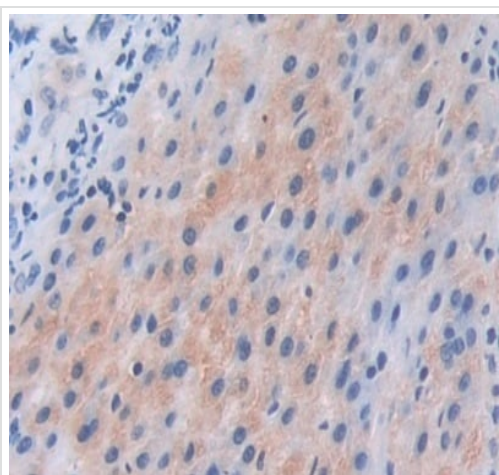
Formalin-fixed, paraffin-embedded human kidney tissue stained for PI3 Kinase p110 beta using ab232997 at 30 µg/ml in immunohistochemical analysis. DAB staining.

Immunohistochemistry (Formalin/PFA-fixed paraffin-embedded sections) - Anti-PI3 Kinase p110 beta antibody (ab232997)



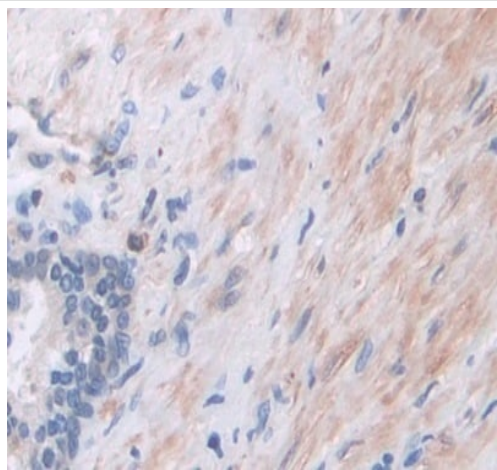
Formalin-fixed, paraffin-embedded human liver tissue stained for PI3 Kinase p110 beta using ab232997 at 30 µg/ml in immunohistochemical analysis. DAB staining.

Immunohistochemistry (Formalin/PFA-fixed paraffin-embedded sections) - Anti-PI3 Kinase p110 beta antibody (ab232997)



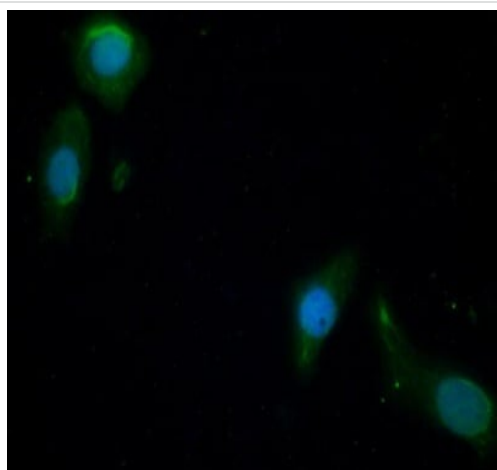
Formalin-fixed, paraffin-embedded human liver cancer tissue stained for PI3 Kinase p110 beta using ab232997 at 30 µg/ml in immunohistochemical analysis. DAB staining.

Immunohistochemistry (Formalin/PFA-fixed paraffin-embedded sections) - Anti-PI3 Kinase p110 beta antibody (ab232997)



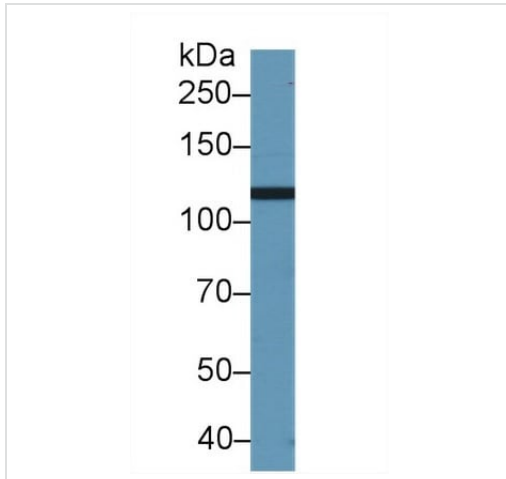
Formalin-fixed, paraffin-embedded human prostate tissue stained for PI3 Kinase p110 beta using ab232997 at 30 µg/ml in immunohistochemical analysis. DAB staining.

Immunohistochemistry (Formalin/PFA-fixed paraffin-embedded sections) - Anti-PI3 Kinase p110 beta antibody (ab232997)



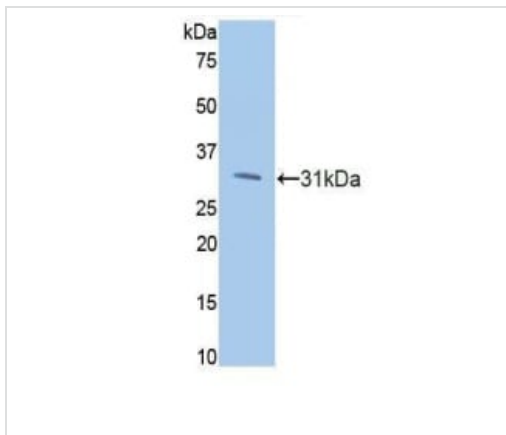
HepG2 (human liver hepatocellular carcinoma cell line) stained for PI3 Kinase p110 beta (green) at 20 µg/mL in ICC/IF. FITC-labeled secondary antibody.

Immunocytochemistry/ Immunofluorescence - Anti-PI3 Kinase p110 beta antibody (ab232997)



Anti-PI3 Kinase p110 beta antibody (ab232997) at 2 µg/ml + Pig cerebrum lysate

Western blot - Anti-PI3 Kinase p110 beta antibody (ab232997)



Anti-PI3 Kinase p110 beta antibody (ab232997) at 2 µg/ml + Recombinant human PI3 Kinase p110 beta protein

Western blot - Anti-PI3 Kinase p110 beta antibody (ab232997)

Please note: All products are "FOR RESEARCH USE ONLY. NOT FOR USE IN DIAGNOSTIC PROCEDURES"

Our Abpromise to you: Quality guaranteed and expert technical support

- Replacement or refund for products not performing as stated on the datasheet
- Valid for 12 months from date of delivery
- Response to your inquiry within 24 hours
- We provide support in Chinese, English, French, German, Japanese and Spanish
- Extensive multi-media technical resources to help you
- We investigate all quality concerns to ensure our products perform to the highest standards

If the product does not perform as described on this datasheet, we will offer a refund or replacement. For full details of the Abpromise, please visit <https://www.abcam.com/abpromise> or contact our technical team.

Terms and conditions

- Guarantee only valid for products bought direct from Abcam or one of our authorized distributors