


### Anti-PIGA antibody ab69768

★★★★★ [3 Abreviews](#) [2 References](#) [2 Images](#)

#### Overview

<b>Product name</b>	Anti-PIGA antibody
<b>Description</b>	Rabbit polyclonal to PIGA
<b>Host species</b>	Rabbit
<b>Tested applications</b>	<b>Suitable for:</b> ICC/IF, WB
<b>Species reactivity</b>	<b>Reacts with:</b> Human <b>Predicted to work with:</b> Mouse, Dog, Chimpanzee 
<b>Immunogen</b>	Synthetic peptide corresponding to Human PIGA aa 200-300 conjugated to keyhole limpet haemocyanin. (Peptide available as <a href="#">ab69767</a> )
<b>Positive control</b>	This antibody gave a positive signal in the following Human Whole Cell Lysates: TE 671, A498, HeLa - Hydroxyurea Treated (48hr, 2µM), Jurkat - Staurosporine Treated (24hr, 500nM), Y79, HeLa - Staurosporine Treated (24hr, 500nM), HeLa - Hydroxyurea Treated (48hr, 1µM)
<b>General notes</b>	<p>The Life Science industry has been in the grips of a reproducibility crisis for a number of years. Abcam is leading the way in addressing this with our range of recombinant monoclonal antibodies and knockout edited cell lines for gold-standard validation. Please check that this product meets your needs before purchasing.</p> <p>If you have any questions, special requirements or concerns, please send us an inquiry and/or contact our Support team ahead of purchase. Recommended alternatives for this product can be found below, along with publications, customer reviews and Q&amp;As</p>

#### Properties

<b>Form</b>	Liquid
<b>Storage instructions</b>	Shipped at 4°C. Store at +4°C short term (1-2 weeks). Upon delivery aliquot. Store at -20°C or -80°C. Avoid freeze / thaw cycle.
<b>Storage buffer</b>	pH: 7.40 Preservative: 0.02% Sodium azide Constituent: PBS
	Batches of this product that have a concentration < 1mg/ml may have BSA added as a stabilising agent. If you would like information about the formulation of a specific lot, please contact our scientific support team who will be happy to help.

<b>Purity</b>	Immunogen affinity purified
<b>Clonality</b>	Polyclonal
<b>Isotype</b>	IgG

## Applications

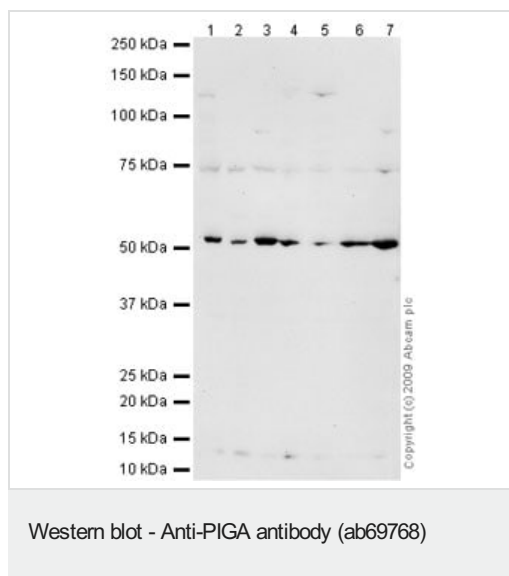
**The Abpromise guarantee** Our **Abpromise guarantee** covers the use of ab69768 in the following tested applications. The application notes include recommended starting dilutions; optimal dilutions/concentrations should be determined by the end user.

Application	Abreviews	Notes
ICC/IF	★★★★★ (2)	Use a concentration of 1 - 5 µg/ml.
WB	★★★★★ (1)	Use a concentration of 1 µg/ml. Detects a band of approximately 54 kDa (predicted molecular weight: 54 kDa).

## Target

<b>Function</b>	Necessary for the synthesis of N-acetylglucosaminyl-phosphatidylinositol, the very early intermediate in GPI-anchor biosynthesis.
<b>Pathway</b>	Glycolipid biosynthesis; glycosylphosphatidylinositol-anchor biosynthesis.
<b>Involvement in disease</b>	<p>Paroxysmal nocturnal hemoglobinuria (PNH) [MIM:300818]: A disorder characterized by hemolytic anemia with hemoglobinuria, thromboses in large vessels, and a deficiency in hematopoiesis. Clinical manifestation of red blood cell breakdown with release of hemoglobin into the urine is manifested most prominently by dark-colored urine in the morning. Note=The disease is caused by mutations affecting the gene represented in this entry.</p> <p>Multiple congenital anomalies-hypotonia-seizures syndrome 2 (MCAHS2) [MIM:300868]: An X-linked recessive developmental disorder characterized by dysmorphic features, neonatal hypotonia, myoclonic seizures, and variable congenital anomalies involving the central nervous, cardiac, and urinary systems. Most affected individuals die in infancy. Note=The disease is caused by mutations affecting the gene represented in this entry.</p>
<b>Sequence similarities</b>	Belongs to the glycosyltransferase group 1 family. Glycosyltransferase 4 subfamily.
<b>Cellular localization</b>	Endoplasmic reticulum membrane.

## Images



**All lanes :** Anti-PIGA antibody (ab69768) at 1 µg/ml

**Lane 1 :** TE 671 (Human Rhabdomyosarcoma) Whole Cell Lysate

**Lane 2 :** A498 (Human Kidney Carcinoma) Whole Cell Lysate

**Lane 3 :** HeLa Whole Cell Lysate - Hydroxyurea Treated (48hr, 2µM)

**Lane 4 :** Jurkat Whole Cell Lysate - Staurosporine Treated (24hr, 500nM)

**Lane 5 :** Y79 (Human retinoblastoma cell line) Whole Cell Lysate

**Lane 6 :** HeLa Whole Cell Lysate - Staurosporine Treated (24hr, 500nM)

**Lane 7 :** HeLa Whole Cell Lysate - Hydroxyurea Treated (48hr, 1µM)

Lysates/proteins at 10 µg per lane.

### Secondary

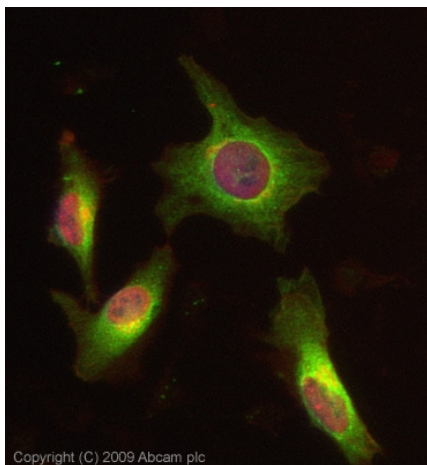
**All lanes :** Goat polyclonal to Rabbit IgG - H&L - Pre-Adsorbed (HRP) at 1/3000 dilution

Performed under reducing conditions.

**Predicted band size:** 54 kDa

**Observed band size:** 54 kDa

**Additional bands at:** 75 kDa. We are unsure as to the identity of these extra bands.



Immunocytochemistry/ Immunofluorescence - Anti-PIGA antibody (ab69768)

ICC/IF image of ab69768 stained HeLa cells. The cells were 4% PFA fixed (10 min) and then incubated in 1%BSA / 10% normal Goat serum / 0.3M glycine in 0.1% PBS-Tween for 1h to permeabilise the cells and block non-specific protein-protein interactions. The cells were then incubated with the antibody (ab69768, 1µg/ml) overnight at +4°C. The secondary antibody (green) was Alexa Fluor® 488 Goat anti-Rabbit IgG (H+L) used at a 1/1000 dilution for 1h. Alexa Fluor® 594 WGA was used to label plasma membranes (red) at a 1/200 dilution for 1h. DAPI was used to stain the cell nuclei (blue) at a concentration of 1.43µM. This antibody also gave a positive result in 4% PFA fixed (10 min) HepG2 cells at 1µg/ml, and in 100% Methanol fixed (5 min) HeLa, Hek293, HepG2, MCF-7 cells at 5µg/ml.

**Please note:** All products are "FOR RESEARCH USE ONLY. NOT FOR USE IN DIAGNOSTIC PROCEDURES"

### Our Abpromise to you: Quality guaranteed and expert technical support

- Replacement or refund for products not performing as stated on the datasheet
- Valid for 12 months from date of delivery
- Response to your inquiry within 24 hours
- We provide support in Chinese, English, French, German, Japanese and Spanish
- Extensive multi-media technical resources to help you
- We investigate all quality concerns to ensure our products perform to the highest standards

If the product does not perform as described on this datasheet, we will offer a refund or replacement. For full details of the Abpromise, please visit <https://www.abcam.com/abpromise> or contact our technical team.

### Terms and conditions

- Guarantee only valid for products bought direct from Abcam or one of our authorized distributors