

Product datasheet

Anti-Pigu antibody [EPR16424] - C-terminal ab192255

Recombinant RabMAb

[1 References](#) [6 Images](#)

Overview

Product name	Anti-Pigu antibody [EPR16424] - C-terminal
Description	Rabbit monoclonal [EPR16424] to Pigu - C-terminal
Host species	Rabbit
Tested applications	Suitable for: IHC-P, WB
Species reactivity	Reacts with: Mouse, Rat, Human
Immunogen	Synthetic peptide. This information is proprietary to Abcam and/or its suppliers.
Positive control	HeLa, 293, Human fetal brain, C6, RAW 264.7, PC12 and NIH 3T3 lysates; Human liver and mouse kidney tissues.
General notes	<p>This product is a recombinant monoclonal antibody, which offers several advantages including:</p> <ul style="list-style-type: none">- High batch-to-batch consistency and reproducibility- Improved sensitivity and specificity- Long-term security of supply- Animal-free production <p>For more information see here.</p> <p>Our RabMAb[®] technology is a patented hybridoma-based technology for making rabbit monoclonal antibodies. For details on our patents, please refer to RabMAb[®] patents.</p>

Properties

Form	Liquid
Storage instructions	Shipped at 4°C. Store at +4°C short term (1-2 weeks). Upon delivery aliquot. Store at -20°C long term. Avoid freeze / thaw cycle.
Storage buffer	pH: 7.2 Preservative: 0.01% Sodium azide Constituents: 40% Glycerol (glycerin, glycerine), 59% PBS, 0.05% BSA
Purity	Protein A purified
Clonality	Monoclonal
Clone number	EPR16424
Isotype	IgG

Applications

The Abpromise guarantee

Our **Abpromise guarantee** covers the use of ab192255 in the following tested applications.

The application notes include recommended starting dilutions; optimal dilutions/concentrations should be determined by the end user.

Application	Abreviews	Notes
IHC-P		1/500 - 1/1000. Perform heat mediated antigen retrieval with Tris/EDTA buffer pH 9.0 before commencing with IHC staining protocol.
WB		1/1000 - 1/10000. Detects a band of approximately 50 kDa (predicted molecular weight: 50 kDa).

Target

Function

Component of the GPI transamidase complex. May be involved in the recognition of either the GPI attachment signal or the lipid portion of GPI.

Pathway

Glycolipid biosynthesis; glycosylphosphatidylinositol-anchor biosynthesis.

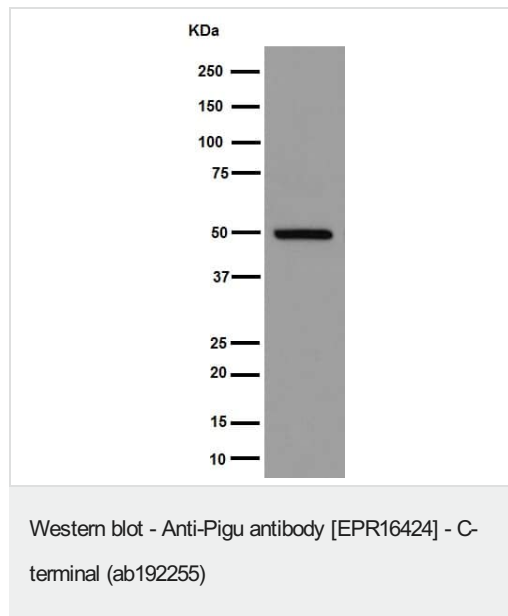
Sequence similarities

Belongs to the PIGU family.

Cellular localization

Endoplasmic reticulum membrane.

Images

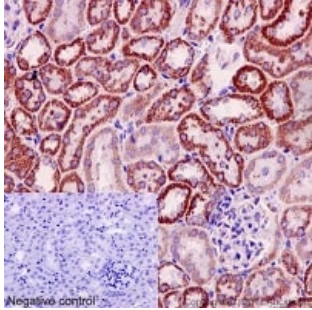


Anti-Pigu antibody [EPR16424] - C-terminal (ab192255) at 1/10000 dilution + HeLa cell lysate at 20 µg

Secondary

Goat Anti-Rabbit IgG, (H+L), Peroxidase conjugated at 1/1000 dilution

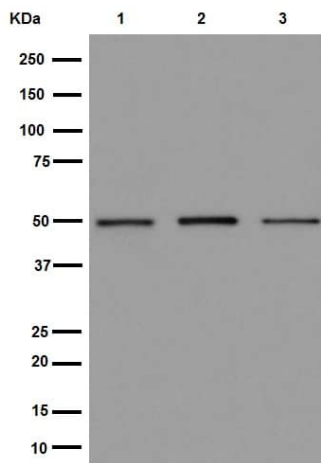
Predicted band size: 50 kDa



Immunohistochemistry (Formalin/PFA-fixed paraffin-embedded sections) - Anti-Pigu antibody [EPR16424] - C-terminal (ab192255)

Immunohistochemical analysis of paraffin-embedded Mouse kidney tissue labeling Pigu with ab192255 at 1/1000 dilution. A ready to use HRP Polymer for Rabbit IgG was used as the secondary. Hematoxylin counterstain.

Perform heat mediated antigen retrieval with Tris/EDTA buffer pH 9.0 before commencing with IHC staining protocol.



Western blot - Anti-Pigu antibody [EPR16424] - C-terminal (ab192255)

All lanes : Anti-Pigu antibody [EPR16424] - C-terminal (ab192255) at 1/1000 dilution

Lane 1 : HT-1376 cell lysate

Lane 2 : 293 cell lysate

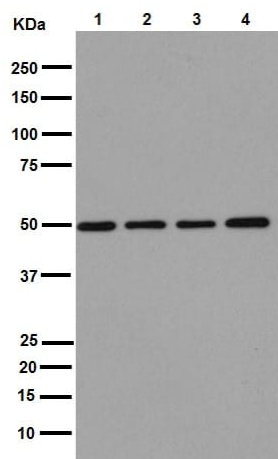
Lane 3 : Human fetal brain tissue lysate

Lysates/proteins at 20 µg per lane.

Secondary

All lanes : Goat Anti-Rabbit IgG, (H+L), Peroxidase conjugated at 1/1000 dilution

Predicted band size: 50 kDa



Western blot - Anti-Pigu antibody [EPR16424] - C-terminal (ab192255)

All lanes : Anti-Pigu antibody [EPR16424] - C-terminal (ab192255) at 1/1000 dilution

Lane 1 : C6 cell lysate

Lane 2 : RAW 264.7 cell lysate

Lane 3 : PC12 cell lysate

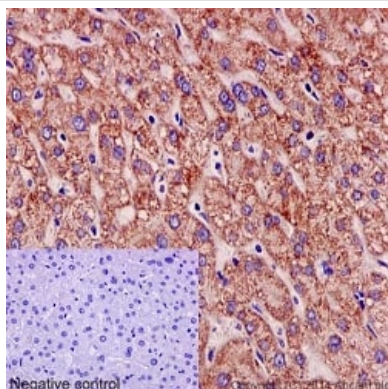
Lane 4 : NIH 3T3 cell lysate

Lysates/proteins at 10 µg per lane.

Secondary

All lanes : Goat Anti-Rabbit IgG, (H+L), Peroxidase conjugated at 1/1000 dilution

Predicted band size: 50 kDa



Immunohistochemistry (Formalin/PFA-fixed paraffin-embedded sections) - Anti-Pigu antibody [EPR16424] - C-terminal (ab192255)

Immunohistochemical analysis of paraffin-embedded Human liver tissue labeling Pigu with ab192255 at 1/1000 dilution. A ready to use HRP Polymer for Rabbit IgG was used as the secondary. Hematoxylin counterstain.

Perform heat mediated antigen retrieval with Tris/EDTA buffer pH 9.0 before commencing with IHC staining protocol.

Why choose a recombinant antibody?



Research with confidence
Consistent and reproducible results



Long-term and scalable supply
Recombinant technology



Success from the first experiment
Confirmed specificity



Ethical standards compliant
Animal-free production

Anti-Pigu antibody [EPR16424] - C-terminal
(ab192255)

Please note: All products are "FOR RESEARCH USE ONLY. NOT FOR USE IN DIAGNOSTIC PROCEDURES"

Our Abpromise to you: Quality guaranteed and expert technical support

- Replacement or refund for products not performing as stated on the datasheet
- Valid for 12 months from date of delivery
- Response to your inquiry within 24 hours
- We provide support in Chinese, English, French, German, Japanese and Spanish
- Extensive multi-media technical resources to help you
- We investigate all quality concerns to ensure our products perform to the highest standards

If the product does not perform as described on this datasheet, we will offer a refund or replacement. For full details of the Abpromise, please visit <https://www.abcam.com/abpromise> or contact our technical team.

Terms and conditions

- Guarantee only valid for products bought direct from Abcam or one of our authorized distributors