

Product datasheet

Anti-PIM1 antibody [EPR24447-39] ab300453

Recombinant RabMAb

5 Images

Overview

Product name	Anti-PIM1 antibody [EPR24447-39]
Description	Rabbit monoclonal [EPR24447-39] to PIM1
Host species	Rabbit
Tested applications	Suitable for: IP, WB Unsuitable for: Flow Cyt (Intra) or IHC-P
Species reactivity	Reacts with: Mouse, Human Does not react with: Rat
Immunogen	Recombinant fragment. This information is proprietary to Abcam and/or its suppliers.
Positive control	WB: K-562, K-562 transfected with siRNA specifically targeti PIM1, whole, K-562, A20, F9, His-tagged human PIM1 recombinant protein and His-tagged human PIM3 recombinant protein lysates. IP: A20 cell.
General notes	<p>This product is a recombinant monoclonal antibody, which offers several advantages including:</p> <ul style="list-style-type: none"> - High batch-to-batch consistency and reproducibility - Improved sensitivity and specificity - Long-term security of supply - Animal-free production <p>For more information see here.</p> <p>Our RabMAb[®] technology is a patented hybridoma-based technology for making rabbit monoclonal antibodies. For details on our patents, please refer to RabMAb[®] patents.</p>

Properties

Form	Liquid
Storage instructions	Shipped at 4°C. Store at +4°C short term (1-2 weeks). Upon delivery aliquot. Store at -20°C long term. Avoid freeze / thaw cycle.
Storage buffer	pH: 7.20 Preservative: 0.01% Sodium azide Constituents: 59% PBS, 40% Glycerol (glycerin, glycerine), 0.05% BSA
Purity	Protein A purified
Clonality	Monoclonal

Clone number EPR24447-39

Isotype IgG

Applications

The Abpromise guarantee Our **Abpromise guarantee** covers the use of ab300453 in the following tested applications. The application notes include recommended starting dilutions; optimal dilutions/concentrations should be determined by the end user.

Application	Abreviews	Notes
IP		1/30. Tested in mouse samples only
WB		1/1000. Detects a band of approximately 34, 44 kDa.

Application notes Is unsuitable for Flow Cyt (Intra) or IHC-P.

Target

Function May affect the structure or silencing of chromatin by phosphorylating HP1 gamma/CBX3. Isoform 2 promotes the G1/S transition of the cell cycle via up-regulation of CDK2 activity and phosphorylation of CDKN1B, resulting in enhanced nuclear export and proteasome-dependent degradation of CDKN1B. Isoform 2 also represses CDKN1B transcription by phosphorylating and inactivating the transcription factor FOXO3. Plays a role in signal transduction in blood cells. Contributes to both cell proliferation and survival and thus provides a selective advantage in tumorigenesis.

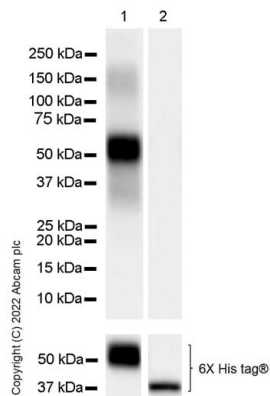
Tissue specificity Expressed primarily in cells of the hematopoietic and germline lineages. Isoform 1 and isoform 2 are both expressed in prostate cancer cell lines.

Sequence similarities Belongs to the protein kinase superfamily. CAMK Ser/Thr protein kinase family. PIM subfamily. Contains 1 protein kinase domain.

Post-translational modifications Autophosphorylated on both serine/threonine and tyrosine residues.

Cellular localization Cytoplasm. Nucleus and Cell membrane.

Images



Western blot - Anti-PIM1 antibody [EPR24447-39]
(AB300453)

All lanes : Anti-PIM1 antibody [EPR24447-39] (ab300453) at
1/5000 dilution

Lane 1 : His-tagged human PIM1 recombinant protein

Lane 2 : His-tagged human PIM3 recombinant protein

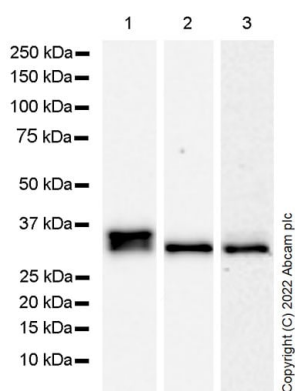
Lysates/proteins at 0.01 µg per lane.

Secondary

All lanes : Goat Anti-Rabbit IgG H&L (HRP) ([ab97051](#)) at
1/100000 dilution

Observed band size: 34,44 kDa

Exposure time: 7 seconds



Western blot - Anti-PIM1 antibody [EPR24447-39]
(AB300453)

All lanes : Anti-PIM1 antibody [EPR24447-39] (ab300453) at
1/1000 dilution

Lane 1 : K-562 (human chronic myelogenous leukemia
lymphoblast), whole cell lysate

Lane 2 : A20 (Mouse reticulum sarcoma B lymphocyte), whole cell
lysate

Lane 3 : F9 (mouse embryonal carcinoma epithelial cell), whole cell
lysate

Lysates/proteins at 20 µg per lane.

Secondary

All lanes : Goat Anti-Rabbit IgG H&L (HRP) ([ab97051](#)) at
1/100000 dilution

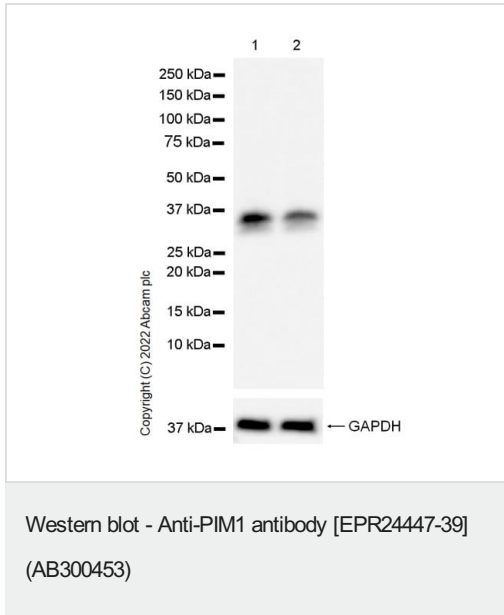
Observed band size: 34 kDa

Blocking / Diluting buffer and concentration:5% NFDm/TBST

Exposure time:

Lane 1, 2: 70 seconds

Lane 3: 3 minutes



All lanes : Anti-PIM1 antibody [EPR24447-39] (ab300453) at 1/1000 dilution

Lane 1 : K-562 (human chronic myelogenous leukemia lymphoblast) transfected with scrambled siRNA control, whole cell lysate

Lane 2 : K-562 transfected with siRNA specifically targeting PIM1, whole cell lysate

Lysates/proteins at 20 µg per lane.

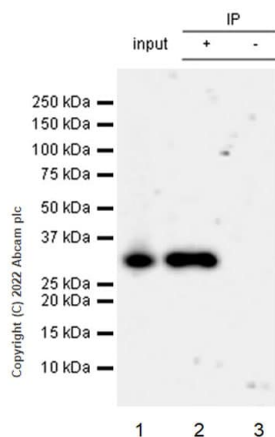
Secondary

All lanes : Goat Anti-Rabbit IgG H&L (HRP) ([ab97051](#)) at 1/100000 dilution

Observed band size: 34 kDa

Exposure time: 37 seconds

Blocking / Diluting buffer and concentration:5% NFDm/TBST



Immunoprecipitation - Anti-PIM1 antibody
[EPR24447-39] (AB300453)

PIM1 was immunoprecipitated from 0.35 mg A20 (mouse reticulum sarcoma B lymphocyte), whole cell lysate 10 ug with ab300453 at 1/30 dilution (2ug in 0.35mg lysates). Western blot was performed on the immunoprecipitate using ab300453 at ID63 dilution. VeriBlot for IP secondary antibody (HRP)([ab131366](#)) was used at 1/5000 dilution.

Lane 1: A20 (mouse reticulum sarcoma B lymphocyte), whole cell lysate 10 ug

Lane 2: ab300453 IP in A20 whole cell lysate

Lane 3: Rabbit monoclonal IgG ([ab172730](#)) instead of ab300453 in A20 whole cell lysate

Blocking and dilution buffer and concentration: 5% NFDM/TBST.

Exposure time: 3 minutes

Why choose a recombinant antibody?



Research with confidence
Consistent and reproducible results



Long-term and scalable supply
Recombinant technology



Success from the first experiment
Confirmed specificity



Ethical standards compliant
Animal-free production

Anti-PIM1 antibody [EPR24447-39] (AB300453)

Please note: All products are "FOR RESEARCH USE ONLY. NOT FOR USE IN DIAGNOSTIC PROCEDURES"

Our Abpromise to you: Quality guaranteed and expert technical support

- Replacement or refund for products not performing as stated on the datasheet
- Valid for 12 months from date of delivery
- Response to your inquiry within 24 hours
- We provide support in Chinese, English, French, German, Japanese and Spanish
- Extensive multi-media technical resources to help you
- We investigate all quality concerns to ensure our products perform to the highest standards

If the product does not perform as described on this datasheet, we will offer a refund or replacement. For full details of the Abpromise, please visit <https://www.abcam.com/abpromise> or contact our technical team.

Terms and conditions

- Guarantee only valid for products bought direct from Abcam or one of our authorized distributors