

Product datasheet

Anti-PINCH 1 + PINCH 2 antibody [EP1944] ab108609

Recombinant RabMAb

[3 References](#) [5 Images](#)

Overview

Product name	Anti-PINCH 1 + PINCH 2 antibody [EP1944]
Description	Rabbit monoclonal [EP1944] to PINCH 1 + PINCH 2
Host species	Rabbit
Specificity	The mouse and rat recommendation is based on the WB results. We do not guarantee IHC-P for mouse and rat.
Tested applications	Suitable for: Flow Cyt (Intra), WB, IHC-P, ICC/IF
Species reactivity	Reacts with: Mouse, Rat, Human
Immunogen	Synthetic peptide. This information is proprietary to Abcam and/or its suppliers.
Positive control	WB: HeLa, Mouse and Rat kidney lysate, and His-tagged human recombinant LIMS1 and LIMS2 protein. IHC-P: Human breast carcinoma tissue. ICC/IF: 293T cells. Flow Cyt (Intra): 293T cells.
General notes	<p>This product has switched from a hybridoma to recombinant production method on 7th September 2023.</p> <p>This product is a recombinant monoclonal antibody, which offers several advantages including:</p> <ul style="list-style-type: none">- High batch-to-batch consistency and reproducibility- Improved sensitivity and specificity- Long-term security of supply- Animal-free production <p>For more information see here.</p> <p>Our RabMAb[®] technology is a patented hybridoma-based technology for making rabbit monoclonal antibodies. For details on our patents, please refer to RabMAb[®] patents.</p>

Properties

Form	Liquid
Storage instructions	Shipped at 4°C. Store at -20°C. Stable for 12 months at -20°C.
Storage buffer	pH: 7.20 Preservative: 0.01% Sodium azide Constituents: 59% PBS, 40% Glycerol (glycerin, glycerine), 0.05% BSA
Purity	Protein A purified

Clonality	Monoclonal
Clone number	EP1944
Isotype	IgG

Applications

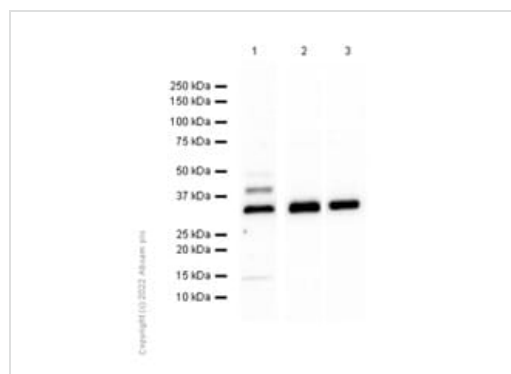
The Abpromise guarantee Our **Abpromise guarantee** covers the use of ab108609 in the following tested applications. The application notes include recommended starting dilutions; optimal dilutions/concentrations should be determined by the end user.

Application	Abreviews	Notes
Flow Cyt (Intra)		1/50.
WB		1/10000. Detects a band of approximately 35 kDa (predicted molecular weight: 37 kDa).
IHC-P		1/1000. Perform heat mediated antigen retrieval before commencing with IHC staining protocol.
ICC/IF		1/50.

Target

Cellular localization PINCH 1: Cell junction > focal adhesion. Cell membrane. PINCH-2: Nucleus. Cell junction > focal adhesion. Cell membrane.

Images



Western blot - Anti-PINCH 1 + PINCH 2 antibody [EP1944] (ab108609)

All lanes : Anti-PINCH 1 + PINCH 2 antibody [EP1944] (ab108609) at 1/10000 dilution

Lane 1 : HeLa (Human cervix adenocarcinoma epithelial cell) whole cell lysate

Lane 2 : Mouse kidney lysate

Lane 3 : Rat kidney lysate

Lysates/proteins at 15 µg per lane.

Secondary

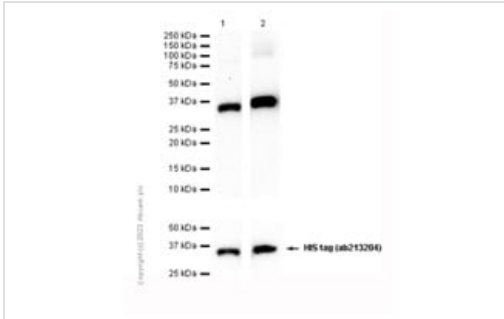
All lanes : Goat Anti-Rabbit IgG H&L (HRP) (**ab97051**) at 1/20000 dilution

Performed under reducing conditions.

Predicted band size: 37 kDa

Observed band size: 35 kDa

Blocking and diluting buffer and concentration: 5% NFDm/TBST.



Western blot - Anti-PINCH 1 + PINCH 2 antibody [EP1944] (ab108609)

All lanes : Anti-PINCH 1 + PINCH 2 antibody [EP1944] (ab108609) at 1/10000 dilution

Lane 1 : His-tagged human recombinant LIMS1 protein(aa1-325), 10ng

Lane 2 : His-tagged human recombinant LIMS2 protein(aa1-341), 10ng

Secondary

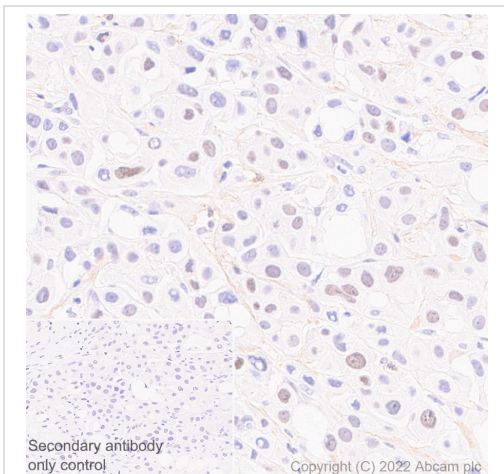
All lanes : Goat Anti-Rabbit IgG H&L (HRP) (**ab97051**) at 1/20000 dilution

Performed under reducing conditions.

Predicted band size: 37 kDa

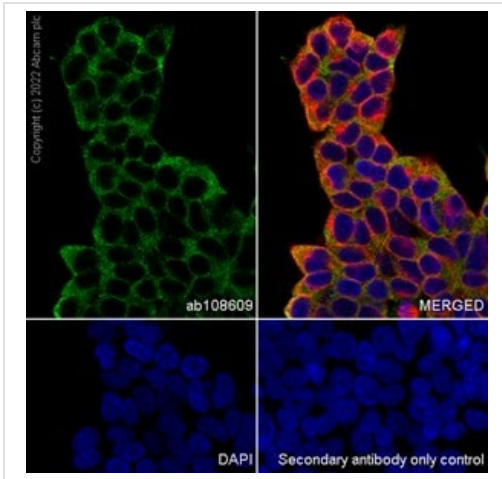
Observed band size: 35 kDa

Blocking and diluting buffer and concentration: 5% NFDm/TBST.



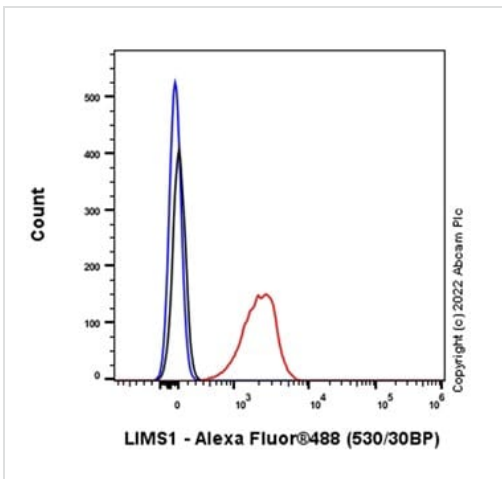
Immunohistochemistry (Formalin/PFA-fixed paraffin-embedded sections) - Anti-PINCH 1 + PINCH 2 antibody [EP1944] (ab108609)

Immunohistochemical analysis of paraffin-embedded Human breast carcinoma tissue labeling PINCH 1 + PINCH 2 with ab108609 at 1/1000 dilution. The immunostaining was performed on a Leica Biosystems BOND® RX instrument. Counterstained with Hematoxylin. Heat mediated antigen retrieval was performed with Citrate buffer (pH 6.0, epitope retrieval solution 1) for 20 mins.



Immunocytochemistry/ Immunofluorescence - Anti-PINCH 1 + PINCH 2 antibody [EP1944] (ab108609)

Immunofluorescent analysis of 4% Paraformaldehyde-fixed, 0.1% TritonX-100 permeabilized 293T cells labelling PINCH 1 + PINCH 2 with ab108609 at 1/50 dilution, followed by AlexaFluor® 488-conjugated Goat anti-Rabbit secondary antibody (**ab150081**) at 1/1000 dilution at RT for 45 min. **ab195889** Anti-alpha Tubulin mouse monoclonal antibody - Microtubule Marker (Alexa Fluor® 594), used as a counterstain at 1/200 dilution, was co-incubated with ab108609 overnight at 4° C. Nucleus were visualized using DAPI.



Flow Cytometry (Intracellular) - Anti-PINCH 1 + PINCH 2 antibody [EP1944] (ab108609)

293T cells were fixed with 100µl 4% PFA for 10 min at RT, then permeabilized with 100µl 90% methanol for 30 min (-20° C) followed by blocking with 10% goat serum for 1h at room temperature. Incubate ab108609 for 30 min at room temperature (RT) and then incubate Goat Anti-Rabbit IgG H&L (Alexa Fluor® 488) (**ab150081**) for 30 min at room temperature.

Please note: All products are "FOR RESEARCH USE ONLY. NOT FOR USE IN DIAGNOSTIC PROCEDURES"

Our Abpromise to you: Quality guaranteed and expert technical support

- Replacement or refund for products not performing as stated on the datasheet
- Valid for 12 months from date of delivery
- Response to your inquiry within 24 hours
- We provide support in Chinese, English, French, German, Japanese and Spanish
- Extensive multi-media technical resources to help you
- We investigate all quality concerns to ensure our products perform to the highest standards

If the product does not perform as described on this datasheet, we will offer a refund or replacement. For full details of the Abpromise, please visit <https://www.abcam.com/abpromise> or contact our technical team.

Terms and conditions

- Guarantee only valid for products bought direct from Abcam or one of our authorized distributors