

## Product datasheet

### Anti-PITRM1 antibody ab241986

1 Image

#### Overview

<b>Product name</b>	Anti-PITRM1 antibody
<b>Description</b>	Rabbit polyclonal to PITRM1
<b>Host species</b>	Rabbit
<b>Tested applications</b>	<b>Suitable for:</b> IP
<b>Species reactivity</b>	<b>Reacts with:</b> Human
<b>Immunogen</b>	Synthetic peptide within Human PITRM1 aa 987-1037. The exact sequence is proprietary. Database link: <a href="#">Q5JRX3</a>
<b>Positive control</b>	IP: PITRM1 IP in HEK-293T whole cell lysate.
<b>General notes</b>	<p>ab241986 has not performed satisfactorily when used for WB of PITRM1 in crude preparations (e.g. whole cell lysate). This antibody can be used for WB of enriched (e.g. immunoprecipitated) sources of PITRM1.</p> <p>The Life Science industry has been in the grips of a reproducibility crisis for a number of years. Abcam is leading the way in addressing this with our range of recombinant monoclonal antibodies and knockout edited cell lines for gold-standard validation. Please check that this product meets your needs before purchasing.</p> <p>If you have any questions, special requirements or concerns, please send us an inquiry and/or contact our Support team ahead of purchase. Recommended alternatives for this product can be found below, along with publications, customer reviews and Q&amp;As</p>

#### Properties

<b>Form</b>	Liquid
<b>Storage instructions</b>	Shipped at 4°C. Store at +4°C short term (1-2 weeks). Upon delivery aliquot. Store at -20°C long term. Avoid freeze / thaw cycle.
<b>Storage buffer</b>	<p>pH: 7</p> <p>Preservative: 0.09% Sodium azide</p> <p>Constituent: Tris citrate/phosphate</p> <p>pH 7-8</p>
<b>Purity</b>	Immunogen affinity purified
<b>Purification notes</b>	Antibody was affinity purified using an epitope specific to PITRM1 immobilized on solid support.

Clonality	Polyclonal
Isotype	IgG

## Applications

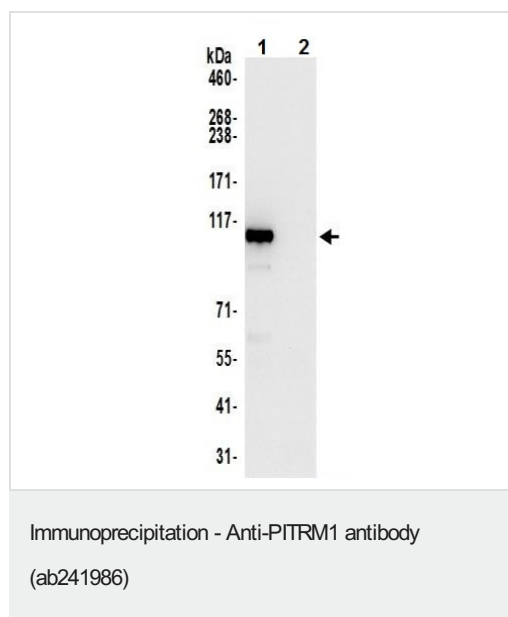
**The Abpromise guarantee** Our **Abpromise guarantee** covers the use of ab241986 in the following tested applications. The application notes include recommended starting dilutions; optimal dilutions/concentrations should be determined by the end user.

Application	Abreviews	Notes
IP		Use at 2-10 µg/mg of lysate.

## Target

<b>Function</b>	ATP-independent protease that degrades mitochondrial transit peptides after their cleavage. Also degrades other unstructured peptides. Specific for peptides in the range of 10 to 65 residues. Able to degrade amyloid beta A4 (APP) protein when it accumulates in mitochondrion, suggesting a link with Alzheimer disease. Shows a preference for cleavage after small polar residues and before basic residues, but without any positional preference.
<b>Tissue specificity</b>	Widely expressed. Expressed at higher level in muscle and heart compared to brain, pancreas, liver, lung and placenta.
<b>Sequence similarities</b>	Belongs to the peptidase M16 family. PreP subfamily.
<b>Post-translational modifications</b>	The disulfide bond may lock the enzyme in a closed conformation under oxidized conditions, suggesting that it may participate in redox regulation of the enzyme.
<b>Cellular localization</b>	Mitochondrion matrix.

## Images



PITRM1 was immunoprecipitated from HEK-293T (human epithelial cell line from embryonic kidney transformed with large T antigen) whole cell lysate (1.0 mg per IP reaction; 20% of IP loaded) using ab241986 at 6 µg per reaction. Western blot was performed from the immunoprecipitate using ab241986 at 0.4 µg/ml.

**Lane 1:** ab241986 IP in HEK-293T whole cell lysate.

**Lane 2:** Control IgG in HEK-293T whole cell lysate.

Detection: Chemiluminescence with an exposure time of 10 seconds

**Please note:** All products are "FOR RESEARCH USE ONLY. NOT FOR USE IN DIAGNOSTIC PROCEDURES"

### **Our Abpromise to you: Quality guaranteed and expert technical support**

---

- Replacement or refund for products not performing as stated on the datasheet
- Valid for 12 months from date of delivery
- Response to your inquiry within 24 hours
  
- We provide support in Chinese, English, French, German, Japanese and Spanish
- Extensive multi-media technical resources to help you
- We investigate all quality concerns to ensure our products perform to the highest standards

If the product does not perform as described on this datasheet, we will offer a refund or replacement. For full details of the Abpromise, please visit <https://www.abcam.com/abpromise> or contact our technical team.

### **Terms and conditions**

---

- Guarantee only valid for products bought direct from Abcam or one of our authorized distributors