


Product datasheet

Anti-PKC alpha (phospho T638) antibody [E195] ab32502

Recombinant RabMAb

[16 References](#) [5 Images](#)

Overview

Product name	Anti-PKC alpha (phospho T638) antibody [E195]
Description	Rabbit monoclonal [E195] to PKC alpha (phospho T638)
Host species	Rabbit
Tested applications	Suitable for: WB, IHC-P Unsuitable for: Flow Cyt
Species reactivity	Reacts with: Human Predicted to work with: Mouse, Rat, Chicken, Cow 
Immunogen	Synthetic peptide. This information is proprietary to Abcam and/or its suppliers.
Positive control	293 cell lysate and normal brain tissue.
General notes	<p>This product is a recombinant monoclonal antibody, which offers several advantages including:</p> <ul style="list-style-type: none"> - High batch-to-batch consistency and reproducibility - Improved sensitivity and specificity - Long-term security of supply - Animal-free production <p>For more information see here.</p> <p>Our RabMAb[®] technology is a patented hybridoma-based technology for making rabbit monoclonal antibodies. For details on our patents, please refer to RabMAb[®] patents.</p>

Properties

Form	Liquid
Storage instructions	Shipped at 4°C. Upon delivery aliquot and store at -20°C. Avoid freeze / thaw cycles.
Storage buffer	pH: 7.20 Preservative: 0.01% Sodium azide Constituents: 49% PBS, 50% Glycerol (glycerin, glycerine), 0.05% BSA
Purity	Protein A purified
Clonality	Monoclonal
Clone number	E195

Isotype

IgG

Applications

The Abpromise guarantee

Our **Abpromise guarantee** covers the use of ab32502 in the following tested applications.

The application notes include recommended starting dilutions; optimal dilutions/concentrations should be determined by the end user.

Application	Abreviews	Notes
WB		1/20000. Detects a band of approximately 80 kDa (predicted molecular weight: 77 kDa).
IHC-P		1/250. Perform heat mediated antigen retrieval with citrate buffer pH 6 before commencing with IHC staining protocol.

Application notes

Is unsuitable for Flow Cyt.

Target

Function

This is a calcium-activated, phospholipid-dependent, serine- and threonine-specific enzyme. May play a role in cell motility by phosphorylating CSPG4.

PKC is activated by diacylglycerol which in turn phosphorylates a range of cellular proteins. PKC also serves as the receptor for phorbol esters, a class of tumor promoters.

Sequence similarities

Belongs to the protein kinase superfamily. AGC Ser/Thr protein kinase family. PKC subfamily.

Contains 1 AGC-kinase C-terminal domain.

Contains 1 C2 domain.

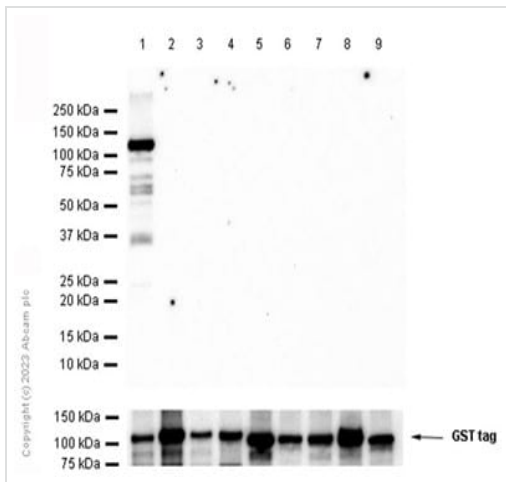
Contains 2 phorbol-ester/DAG-type zinc fingers.

Contains 1 protein kinase domain.

Cellular localization

Cytoplasm. Cell membrane. Nucleus.

Images



Western blot - Anti-PKC alpha (phospho T638) antibody [E195] (ab32502)

All lanes : Anti-PKC alpha (phospho T638) antibody [E195] (ab32502) at 1/1000 dilution

Lane 1 : Recombinant human PKC alpha protein (Active) ([ab55672](#))

Lane 2 : Recombinant human PKC beta 1 protein ([ab60840](#))

Lane 3 : Recombinant human PKC beta 2 protein ([ab60841](#))

Lane 4 : Recombinant human PKC gamma protein ([ab60842](#))

Lane 5 : Recombinant human PKC delta protein ([ab60844](#))

Lane 6 : Recombinant human PKC zeta protein ([ab60848](#))

Lane 7 : Recombinant human PKC eta protein ([ab60849](#))

Lane 8 : Recombinant human PKC theta/PRKCQ protein ([ab56641](#))

Lane 9 : Recombinant human PKC iota protein ([ab60850](#))

Secondary

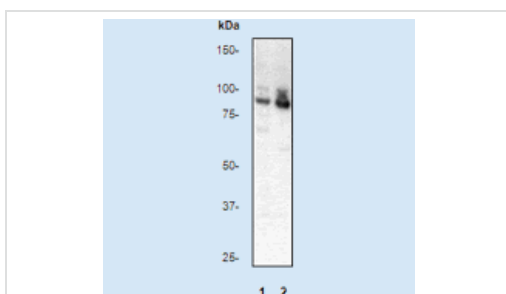
All lanes : Goat Anti-Rabbit IgG H&L (HRP) ([ab97051](#)) at 1/20000 dilution

Predicted band size: 77 kDa

Observed band size: 105 kDa

Exposure time: 60 seconds

Blocking and diluting buffer and concentration: 5% NFDM/TBST.



Western blot - Anti-PKC alpha (phospho T638) antibody [E195] (ab32502)

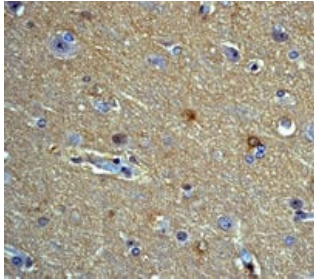
All lanes : Anti-PKC alpha (phospho T638) antibody [E195] (ab32502) at 1/20000 dilution

Lane 1 : 293 cell lysate, untreated

Lane 2 : 293 cell lysate, treated with TPA

Predicted band size: 77 kDa

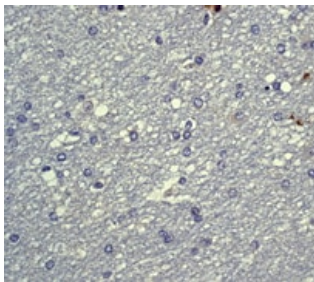
Observed band size: 80 kDa



Immunohistochemistry (Formalin/PFA-fixed paraffin-embedded sections) - Anti-PKC alpha (phospho T638) antibody [E195] (ab32502)

Immunohistochemical staining of untreated paraffin-embedded normal brain tissue using ab32502 at 1/250 dilution.

Perform heat mediated antigen retrieval with citrate buffer pH 6 before commencing with IHC staining protocol.



Immunohistochemistry (Formalin/PFA-fixed paraffin-embedded sections) - Anti-PKC alpha (phospho T638) antibody [E195] (ab32502)

Immunohistochemical staining of Phosphatase-treated paraffin-embedded normal brain tissue using ab32502 at 1/250 dilution

Perform heat mediated antigen retrieval with citrate buffer pH 6 before commencing with IHC staining protocol.

Why choose a recombinant antibody?



Research with confidence
Consistent and reproducible results



Long-term and scalable supply
Recombinant technology



Success from the first experiment
Confirmed specificity



Ethical standards compliant
Animal-free production

Anti-PKC alpha (phospho T638) antibody [E195] (ab32502)

Please note: All products are "FOR RESEARCH USE ONLY. NOT FOR USE IN DIAGNOSTIC PROCEDURES"

Our Abpromise to you: Quality guaranteed and expert technical support

- Replacement or refund for products not performing as stated on the datasheet
- Valid for 12 months from date of delivery
- Response to your inquiry within 24 hours

- We provide support in Chinese, English, French, German, Japanese and Spanish
- Extensive multi-media technical resources to help you
- We investigate all quality concerns to ensure our products perform to the highest standards

If the product does not perform as described on this datasheet, we will offer a refund or replacement. For full details of the Abpromise, please visit <https://www.abcam.com/abpromise> or contact our technical team.

Terms and conditions

- Guarantee only valid for products bought direct from Abcam or one of our authorized distributors