


Product datasheet

Anti-PKC mu/PKD antibody ab172096

★★★★★ [1 Abreviews](#) [2 Images](#)

Overview

Product name	Anti-PKC mu/PKD antibody
Description	Mouse polyclonal to PKC mu/PKD
Host species	Mouse
Tested applications	Suitable for: WB, ICC/IF
Species reactivity	Reacts with: Human Predicted to work with: Mouse, Rat 
Immunogen	Recombinant full length protein within Human PKC mu/PKD aa 1 to the C-terminus. The exact immunogen sequence used to generate this antibody is proprietary information. If additional detail on the immunogen is needed to determine the suitability of the antibody for your needs, please contact our Scientific Support team to discuss your requirements. NCBI: AA160015.1 Database link: Q15139 Run BLAST with Run BLAST with
Positive control	Lysate from 293T cells transfected with PKC mu/PKD.
General notes	<p>The Life Science industry has been in the grips of a reproducibility crisis for a number of years. Abcam is leading the way in addressing this with our range of recombinant monoclonal antibodies and knockout edited cell lines for gold-standard validation. Please check that this product meets your needs before purchasing.</p> <p>If you have any questions, special requirements or concerns, please send us an inquiry and/or contact our Support team ahead of purchase. Recommended alternatives for this product can be found below, along with publications, customer reviews and Q&As</p>

Properties

Form	Liquid
Storage instructions	Shipped at 4°C. Store at +4°C short term (1-2 weeks). Upon delivery aliquot. Store at -20°C long term. Avoid freeze / thaw cycle.
Storage buffer	pH: 7.40 Constituent: 100% PBS
Purity	Protein A purified
Clonality	Polyclonal
Isotype	IgG

Applications

The Abpromise guarantee Our **Abpromise guarantee** covers the use of ab172096 in the following tested applications.

The application notes include recommended starting dilutions; optimal dilutions/concentrations should be determined by the end user.

Application	Abreviews	Notes
WB	★★★★★ (1)	Use a concentration of 1 µg/ml. Predicted molecular weight: 102 kDa.
ICC/IF		Use a concentration of 10 µg/ml.

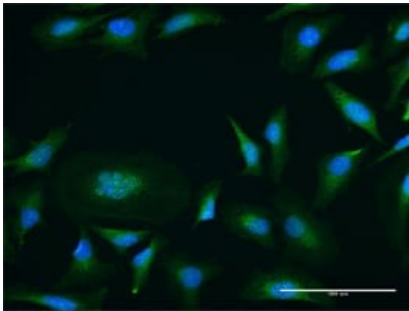
Target

Function Converts transient diacylglycerol (DAG) signals into prolonged physiological effects, downstream of PKC. Involved in resistance to oxidative stress through activation of NF-kappa-B.

Sequence similarities Belongs to the protein kinase superfamily. CAMK Ser/Thr protein kinase family. PKD subfamily. Contains 1 PH domain. Contains 2 phorbol-ester/DAG-type zinc fingers. Contains 1 protein kinase domain.

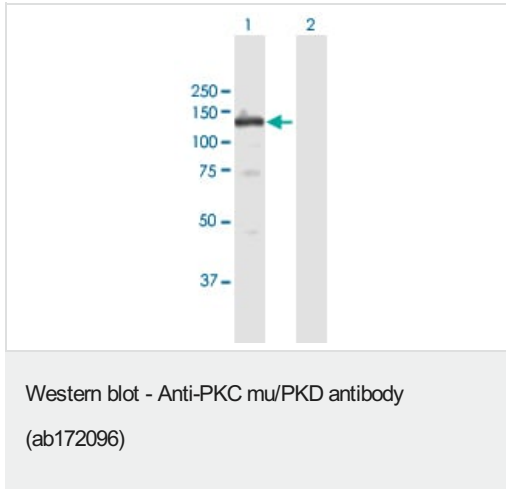
Cellular localization Cytoplasm. Membrane. Translocation to the cell membrane is required for kinase activation.

Images



Immunofluorescence of ab172096 on HeLa cell. [antibody concentration 10 ug/ml]

Immunocytochemistry/ Immunofluorescence - Anti-PKC mu/PKD antibody (ab172096)



All lanes : Anti-PKC mu/PKD antibody (ab172096) at 1 µg/ml

Lane 1 : Lysate from 293T cells transfected with PKC mu/PKD

Lane 2 : Lysate from untransfected 293T cells

Lysates/proteins at 15 µl per lane.

Predicted band size: 102 kDa

Please note: All products are "FOR RESEARCH USE ONLY. NOT FOR USE IN DIAGNOSTIC PROCEDURES"

Our Abpromise to you: Quality guaranteed and expert technical support

- Replacement or refund for products not performing as stated on the datasheet
- Valid for 12 months from date of delivery
- Response to your inquiry within 24 hours
- We provide support in Chinese, English, French, German, Japanese and Spanish
- Extensive multi-media technical resources to help you
- We investigate all quality concerns to ensure our products perform to the highest standards

If the product does not perform as described on this datasheet, we will offer a refund or replacement. For full details of the Abpromise, please visit <https://www.abcam.com/abpromise> or contact our technical team.

Terms and conditions

- Guarantee only valid for products bought direct from Abcam or one of our authorized distributors