

Product datasheet

Anti-PKC mu/PKD (phospho S916) antibody [EP1494Y] ab81218

RabMAb

[2 References](#) [3 Images](#)

Overview

Product name	Anti-PKC mu/PKD (phospho S916) antibody [EP1494Y]
Description	Rabbit monoclonal [EP1494Y] to PKC mu/PKD (phospho S916)
Host species	Rabbit
Tested applications	Suitable for: WB, IHC-P, IP Unsuitable for: Flow Cyt or ICC/IF
Species reactivity	Reacts with: Human
Immunogen	Synthetic peptide. This information is proprietary to Abcam and/or its suppliers.
Positive control	WB: lysate from HeLa cells treated with TPA. IHC: Human placenta tissue.
General notes	<p>Our RabMAb[®] technology is a patented hybridoma-based technology for making rabbit monoclonal antibodies. For details on our patents, please refer to RabMAb[®] patents.</p> <p>The Life Science industry has been in the grips of a reproducibility crisis for a number of years. Abcam is leading the way in addressing this with our range of recombinant monoclonal antibodies and knockout edited cell lines for gold-standard validation. Please check that this product meets your needs before purchasing.</p> <p>If you have any questions, special requirements or concerns, please send us an inquiry and/or contact our Support team ahead of purchase. Recommended alternatives for this product can be found below, along with publications, customer reviews and Q&As</p> <p>Mouse, Rat: We have preliminary internal testing data to indicate this antibody may not react with these species. Please contact us for more information.</p>

Properties

Form	Liquid
Storage instructions	Shipped at 4°C. Upon delivery aliquot and store at -20°C. Avoid repeated freeze / thaw cycles.
Storage buffer	pH: 7.20 Preservative: 0.05% Sodium azide Constituents: 0.1% BSA, 40% Glycerol (glycerin, glycerine), 9.85% Tris glycine, 50% Tissue culture supernatant

Purity	Tissue culture supernatant
Clonality	Monoclonal
Clone number	EP1494Y
Isotype	IgG

Applications

The Abpromise guarantee Our **Abpromise guarantee** covers the use of ab81218 in the following tested applications. The application notes include recommended starting dilutions; optimal dilutions/concentrations should be determined by the end user.

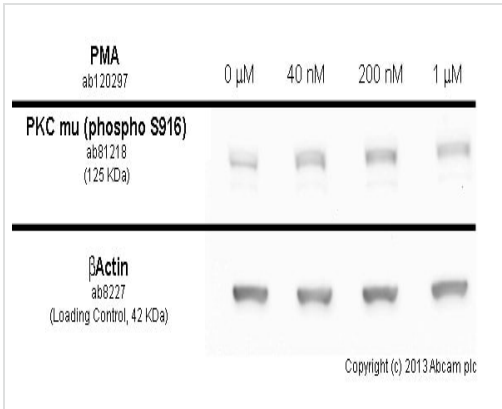
Application	Abreviews	Notes
WB		1/50000 - 1/100000. Predicted molecular weight: 102 kDa.
IHC-P		1/100 - 1/250. Perform heat mediated antigen retrieval with Tris/EDTA buffer pH 9.0 before commencing with IHC staining protocol.
IP		1/60.

Application notes Is unsuitable for Flow Cyt or ICC/IF.

Target

Function	Converts transient diacylglycerol (DAG) signals into prolonged physiological effects, downstream of PKC. Involved in resistance to oxidative stress through activation of NF-kappa-B.
Sequence similarities	Belongs to the protein kinase superfamily. CAMK Ser/Thr protein kinase family. PKD subfamily. Contains 1 PH domain. Contains 2 phorbol-ester/DAG-type zinc fingers. Contains 1 protein kinase domain.
Cellular localization	Cytoplasm. Membrane. Translocation to the cell membrane is required for kinase activation.

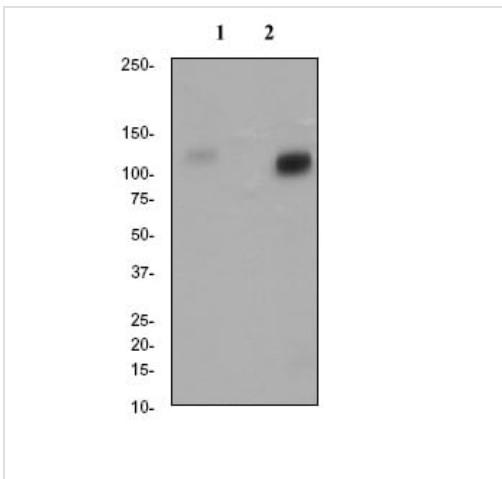
Images



Western blot - Anti-PKC mu/PKD (phospho S916) antibody [EP1494Y] (ab81218)

Serum starved HeLa cells were incubated at 37°C for 60 minutes with vehicle control (0 μM) and different concentrations of phorbol 12-myristate 13-acetate (PMA) ([ab120297](#)) in DMSO. Increased expression of PKC mu/PKD (phospho S916) (ab81218) correlates with an increase in phorbol 12-myristate 13-acetate (PMA) concentration, as described in literature.

Whole cell lysates were prepared with RIPA buffer (containing protease inhibitors and sodium orthovanadate), 20 μg of each were loaded on the gel and the WB was run under reducing conditions. After transfer the membrane was blocked for an hour using 3% milk before being incubated with ab81218 at 1 μg/ml and [ab8227](#) at 1 μg/ml overnight at 4°C. Antibody binding was detected using an **anti-rabbit HRP** secondary antibody ([ab97051](#)) at 1/10000 dilution and visualised using ECL development solution.



Western blot - Anti-PKC mu/PKD (phospho S916) antibody [EP1494Y] (ab81218)

All lanes : Anti-PKC mu/PKD (phospho S916) antibody [EP1494Y] (ab81218) at 1/100000 dilution

Lane 1 : lysate from untreated HeLa cells

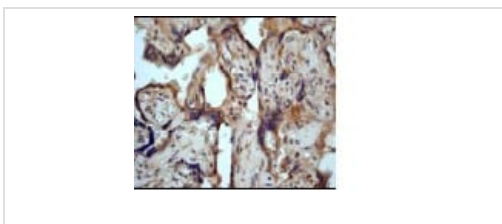
Lane 2 : lysate from HeLa cells treated with TPA

Lysates/proteins at 10 μg per lane.

Secondary

All lanes : HRP labelled Goat anti-Rabbit at 1/2000 dilution

Predicted band size: 102 kDa



Immunohistochemistry (Formalin/PFA-fixed paraffin-embedded sections) - Anti-PKC mu/PKD (phospho S916) antibody [EP1494Y] (ab81218)

Immunohistochemistry analysis of paraffin-embedded Human placenta tissue using 1/100 ab81218.

Perform heat mediated antigen retrieval with EDTA buffer pH 9 before commencing with IHC staining protocol.

Please note: All products are "FOR RESEARCH USE ONLY. NOT FOR USE IN DIAGNOSTIC PROCEDURES"

Our Abpromise to you: Quality guaranteed and expert technical support

-
- Replacement or refund for products not performing as stated on the datasheet
 - Valid for 12 months from date of delivery
 - Response to your inquiry within 24 hours

 - We provide support in Chinese, English, French, German, Japanese and Spanish
 - Extensive multi-media technical resources to help you
 - We investigate all quality concerns to ensure our products perform to the highest standards

If the product does not perform as described on this datasheet, we will offer a refund or replacement. For full details of the Abpromise, please visit <https://www.abcam.com/abpromise> or contact our technical team.

Terms and conditions

- Guarantee only valid for products bought direct from Abcam or one of our authorized distributors