


## Product datasheet

# Anti-PKC zeta antibody - C-terminal ab226772

★☆☆☆☆ [1 Abreviews](#) [2 Images](#)

### Overview

---

<b>Product name</b>	Anti-PKC zeta antibody - C-terminal
<b>Description</b>	Rabbit polyclonal to PKC zeta - C-terminal
<b>Host species</b>	Rabbit
<b>Tested applications</b>	<b>Suitable for:</b> WB, IP
<b>Species reactivity</b>	<b>Reacts with:</b> Human <b>Predicted to work with:</b> Mouse, Rat, Rabbit, Cow, Pig, Zebrafish 
<b>Immunogen</b>	Synthetic peptide within Human PKC zeta (C terminal). The exact sequence is proprietary. (Carrier-protein conjugated). Database link: <a href="#">Q05513</a>
<b>Positive control</b>	WB: HEK-293T, A431, HeLa and HepG2 whole cell extracts. IP: HEK-293T whole cell extract.
<b>General notes</b>	<p>The Life Science industry has been in the grips of a reproducibility crisis for a number of years. Abcam is leading the way in addressing this with our range of recombinant monoclonal antibodies and knockout edited cell lines for gold-standard validation. Please check that this product meets your needs before purchasing.</p> <p>If you have any questions, special requirements or concerns, please send us an inquiry and/or contact our Support team ahead of purchase. Recommended alternatives for this product can be found below, along with publications, customer reviews and Q&amp;As</p>

### Properties

---

<b>Form</b>	Liquid
<b>Storage instructions</b>	Shipped at 4°C. Store at +4°C short term (1-2 weeks). Upon delivery aliquot. Store at -20°C long term. Avoid freeze / thaw cycle.
<b>Storage buffer</b>	pH: 7.00 Preservative: 0.025% Proclin 300 Constituents: 78% PBS, 1% BSA, 20% Glycerol (glycerin, glycerine)
<b>Purity</b>	Immunogen affinity purified
<b>Clonality</b>	Polyclonal
<b>Isotype</b>	IgG

## Applications

---

**The Abpromise guarantee** Our **Abpromise guarantee** covers the use of ab226772 in the following tested applications. The application notes include recommended starting dilutions; optimal dilutions/concentrations should be determined by the end user.

Application	Abreviews	Notes
WB		1/500 - 1/3000. Predicted molecular weight: 68 kDa.
IP		1/100 - 1/500.

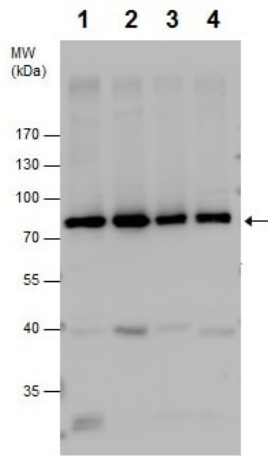
## Target

---

<b>Function</b>	<p>This is a calcium-independent, phospholipid-dependent, serine- and threonine-specific enzyme. Phosphorylates 'Ser-311' of RELA subunit of NF-kappa-B.</p> <p>PKC is activated by diacylglycerol which in turn phosphorylates a range of cellular proteins. PKC also serves as the receptor for phorbol esters, a class of tumor promoters. Subunit of a quaternary complex that plays a central role in epithelial cell polarization.</p>
<b>Tissue specificity</b>	<p>Expressed in brain, and to a lesser extent in lung, kidney and testis.</p>
<b>Sequence similarities</b>	<p>Belongs to the protein kinase superfamily. AGC Ser/Thr protein kinase family. PKC subfamily. Contains 1 AGC-kinase C-terminal domain. Contains 1 OPR domain. Contains 1 phorbol-ester/DAG-type zinc finger. Contains 1 protein kinase domain.</p>
<b>Domain</b>	<p>The OPR domain mediates mutually exclusive interactions with SQSTM1 and PARD6B. The C1 domain does not bind the diacylglycerol (DAG).</p>
<b>Post-translational modifications</b>	<p>CDH5 is required for its phosphorylation at Thr-410.</p>
<b>Cellular localization</b>	<p>Cytoplasm. Endosome. Cell junction. In the retina, localizes in the terminals of the rod bipolar cells (By similarity). Associates with endosomes. Presence of KRIT1, CDH5 and RAP1B is required for its localization to the cell junction.</p>

## Images

---



Western blot - Anti-PKC zeta antibody - C-terminal (ab226772)

**All lanes :** Anti-PKC zeta antibody - C-terminal (ab226772) at 1/1000 dilution

**Lane 1 :** HEK-293T (human epithelial cell line from embryonic kidney transformed with large T antigen) whole cell extract

**Lane 2 :** A431 (human epidermoid carcinoma cell line) whole cell extract

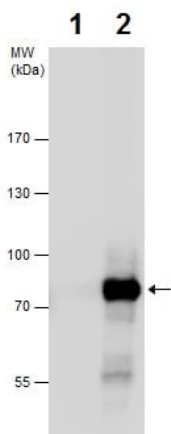
**Lane 3 :** HeLa (human epithelial cell line from cervix adenocarcinoma) whole cell extract

**Lane 4 :** HepG2 (human liver hepatocellular carcinoma cell line) whole cell extract

Lysates/proteins at 30 µg per lane.

**Predicted band size:** 68 kDa

10% SDS-PAGE gel.



Immunoprecipitation - Anti-PKC zeta antibody - C-terminal (ab226772)

PKC zeta was immunoprecipitated from HEK-293T (human epithelial cell line from embryonic kidney transformed with large T antigen) whole cell extract with 5 µg ab226772. Western blot was performed from the immunoprecipitate using ab226772. Anti-Rabbit IgG was used as a secondary reagent.

Lane 1: Control IgG IP in HEK-293T whole cell extract.

Lane 2: ab226772 IP in HEK-293T whole cell extract.

**Please note:** All products are "FOR RESEARCH USE ONLY. NOT FOR USE IN DIAGNOSTIC PROCEDURES"

### Our Abpromise to you: Quality guaranteed and expert technical support

- Replacement or refund for products not performing as stated on the datasheet
- Valid for 12 months from date of delivery
- Response to your inquiry within 24 hours
- We provide support in Chinese, English, French, German, Japanese and Spanish

- Extensive multi-media technical resources to help you
- We investigate all quality concerns to ensure our products perform to the highest standards

If the product does not perform as described on this datasheet, we will offer a refund or replacement. For full details of the Abpromise, please visit <https://www.abcam.com/abpromise> or contact our technical team.

### **Terms and conditions**

---

- Guarantee only valid for products bought direct from Abcam or one of our authorized distributors