


# Anti-PKIB antibody ab196689

[1 References](#) [2 Images](#)

### Overview

<b>Product name</b>	Anti-PKIB antibody
<b>Description</b>	Rabbit polyclonal to PKIB
<b>Host species</b>	Rabbit
<b>Tested applications</b>	<b>Suitable for:</b> ICC/IF, IHC-P
<b>Species reactivity</b>	<b>Reacts with:</b> Human <b>Predicted to work with:</b> Mouse 
<b>Immunogen</b>	Synthetic peptide corresponding to Human PKIB (internal sequence). Database link: <a href="#">Q9C010</a>
<b>Positive control</b>	Human brain tissue; MCF7 cells.
<b>General notes</b>	<p>The Life Science industry has been in the grips of a reproducibility crisis for a number of years. Abcam is leading the way in addressing this with our range of recombinant monoclonal antibodies and knockout edited cell lines for gold-standard validation. Please check that this product meets your needs before purchasing.</p> <p>If you have any questions, special requirements or concerns, please send us an inquiry and/or contact our Support team ahead of purchase. Recommended alternatives for this product can be found below, along with publications, customer reviews and Q&amp;As</p>

### Properties

<b>Form</b>	Liquid
<b>Storage instructions</b>	Shipped at 4°C. Store at +4°C short term (1-2 weeks). Upon delivery aliquot. Store at -20°C long term. Avoid freeze / thaw cycle.
<b>Storage buffer</b>	pH: 7.40 Preservative: 0.02% Sodium azide Constituents: 50% Glycerol (glycerin, glycerine), 0.87% Sodium chloride, 49% PBS  PBS without Mg <sup>2+</sup> and Ca <sup>2+</sup> .
<b>Purity</b>	Immunogen affinity purified
<b>Purification notes</b>	ab196689 was affinity-purified from rabbit antiserum by affinity-chromatography using epitope-specific immunogen.
<b>Clonality</b>	Polyclonal

Isotype

IgG

## Applications

### The Abpromise guarantee

Our **Abpromise guarantee** covers the use of ab196689 in the following tested applications.

The application notes include recommended starting dilutions; optimal dilutions/concentrations should be determined by the end user.

Application	Abreviews	Notes
ICC/IF		1/100 - 1/500.
IHC-P		1/50 - 1/100.

## Target

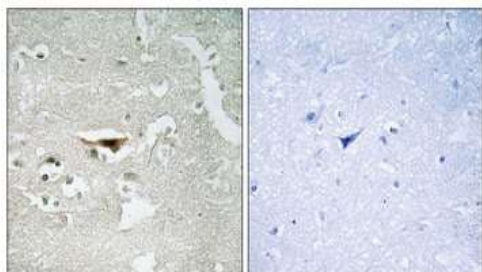
### Function

Extremely potent competitive inhibitor of cAMP-dependent protein kinase activity, this protein interacts with the catalytic subunit of the enzyme after the cAMP-induced dissociation of its regulatory chains.

### Sequence similarities

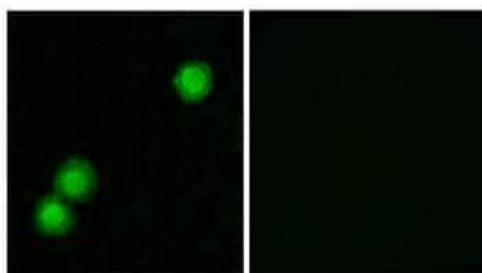
Belongs to the PKI family.

## Images



Immunohistochemistry (Formalin/PFA-fixed paraffin-embedded sections) - Anti-PKIB antibody (ab196689)

Immunohistochemical analysis of paraffin-embedded Human brain tissue labeling PKIB with ab196689 at 1/50 dilution, in the presence (right panel) or absence (left panel) of immunizing peptide.



Immunocytochemistry/ Immunofluorescence - Anti-PKIB antibody (ab196689)

Immunofluorescent analysis of MCF7 cells labeling PKIB with ab196689 at 1/100 dilution, in the presence (right panel) or absence (left panel) of immunizing peptide.

**Please note:** All products are "FOR RESEARCH USE ONLY. NOT FOR USE IN DIAGNOSTIC PROCEDURES"

### **Our Abpromise to you: Quality guaranteed and expert technical support**

---

- Replacement or refund for products not performing as stated on the datasheet
- Valid for 12 months from date of delivery
- Response to your inquiry within 24 hours
- We provide support in Chinese, English, French, German, Japanese and Spanish
- Extensive multi-media technical resources to help you
- We investigate all quality concerns to ensure our products perform to the highest standards

If the product does not perform as described on this datasheet, we will offer a refund or replacement. For full details of the Abpromise, please visit <https://www.abcam.com/abpromise> or contact our technical team.

### **Terms and conditions**

---

- Guarantee only valid for products bought direct from Abcam or one of our authorized distributors