



Product datasheet

Anti-PLA2G4D antibody ab173395

1 Image

Overview

Product name	Anti-PLA2G4D antibody
Description	Rabbit polyclonal to PLA2G4D
Host species	Rabbit
Tested applications	Suitable for: WB
Species reactivity	Reacts with: Human
Immunogen	Recombinant full length protein corresponding to Human PLA2G4D aa 1 to the C-terminus. Database link: AAH34571.1
	 Run BLAST with  Run BLAST with
Positive control	PLA2G4D transfected 293T cell lysate.
General notes	<p>The Life Science industry has been in the grips of a reproducibility crisis for a number of years. Abcam is leading the way in addressing this with our range of recombinant monoclonal antibodies and knockout edited cell lines for gold-standard validation. Please check that this product meets your needs before purchasing.</p> <p>If you have any questions, special requirements or concerns, please send us an inquiry and/or contact our Support team ahead of purchase. Recommended alternatives for this product can be found below, along with publications, customer reviews and Q&As</p>

Properties

Form	Liquid
Storage instructions	Shipped at 4°C. Store at +4°C short term (1-2 weeks). Upon delivery aliquot. Store at -20°C or -80°C. Avoid freeze / thaw cycle.
Storage buffer	pH: 7.4 Constituent: 100% PBS
Purity	Protein A purified
Clonality	Polyclonal
Isotype	IgG

Applications

The Abpromise guarantee

Our **Abpromise guarantee** covers the use of ab173395 in the following tested applications.

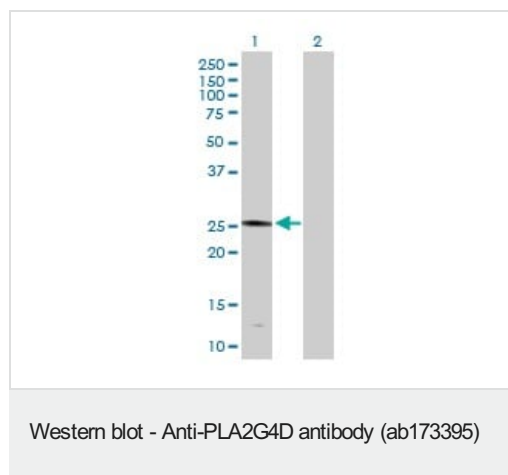
The application notes include recommended starting dilutions; optimal dilutions/concentrations should be determined by the end user.

Application	Abreviews	Notes
WB		Use a concentration of 1 µg/ml. Predicted molecular weight: 24 kDa.

Target

Function	Calcium-dependent phospholipase A2 that selectively hydrolyzes glycerophospholipids in the sn-2 position. Not arachidonic acid-specific but has linoleic acid-specific activity. May play a role in inflammation in psoriatic lesions.
Tissue specificity	Expressed in stratified squamous epithelia, such as those in skin and cervix, but not in other tissues. Strongly expressed in the upper spinous layer of the psoriatic epidermis, expressed weakly and discontinuously in atopic dermatitis and mycosis fungoides, and not detected in the epidermis of normal skin.
Sequence similarities	Contains 1 C2 domain. Contains 1 PLA2c domain.
Domain	The N-terminal C2 domain associates with lipid membranes upon calcium binding. It modulates enzyme activity by presenting the active site to its substrate in response to elevations of cytosolic Ca(2+).
Cellular localization	Cytoplasm > cytosol. Cytoplasmic vesicle membrane. Translocates to membrane vesicles in a calcium-dependent fashion. Translocates to perinuclear regions upon ionomycin stimulation.

Images



All lanes : Anti-PLA2G4D antibody (ab173395) at 1 µg/ml

Lane 1 : PLA2G4D transfected 293T cell lysate

Lane 2 : Non-transfected 293T cell lysate

Lysates/proteins at 15 µl per lane.

Secondary

All lanes : Goat anti-Rabbit IgG at 1/7500 dilution

Predicted band size: 24 kDa

MW of immunogen ~24 kDa.

Please note: All products are "FOR RESEARCH USE ONLY. NOT FOR USE IN DIAGNOSTIC PROCEDURES"

Our Abpromise to you: Quality guaranteed and expert technical support

- Replacement or refund for products not performing as stated on the datasheet
- Valid for 12 months from date of delivery
- Response to your inquiry within 24 hours

- We provide support in Chinese, English, French, German, Japanese and Spanish
- Extensive multi-media technical resources to help you
- We investigate all quality concerns to ensure our products perform to the highest standards

If the product does not perform as described on this datasheet, we will offer a refund or replacement. For full details of the Abpromise, please visit <https://www.abcam.com/abpromise> or contact our technical team.

Terms and conditions

- Guarantee only valid for products bought direct from Abcam or one of our authorized distributors