

Product datasheet

Anti-PLAC1 antibody ab105395

[5 References](#) [3 Images](#)

Overview

Product name	Anti-PLAC1 antibody
Description	Rabbit polyclonal to PLAC1
Host species	Rabbit
Specificity	ab105395 is predicted not to cross-react with other PLAC family protein members.
Tested applications	Suitable for: WB, ICC
Species reactivity	Reacts with: Human
Immunogen	A 15 amino acid synthetic peptide from near the carboxy terminus of Human PLAC1 (NP_068568).
Positive control	Human placenta tissue lysate.
General notes	<p>The Life Science industry has been in the grips of a reproducibility crisis for a number of years. Abcam is leading the way in addressing this with our range of recombinant monoclonal antibodies and knockout edited cell lines for gold-standard validation. Please check that this product meets your needs before purchasing.</p> <p>If you have any questions, special requirements or concerns, please send us an inquiry and/or contact our Support team ahead of purchase. Recommended alternatives for this product can be found below, along with publications, customer reviews and Q&As</p>

Properties

Form	Liquid
Storage instructions	Shipped at 4°C. Store at +4°C.
Storage buffer	pH: 7.2 Preservative: 0.02% Sodium azide Constituent: PBS
Purity	Immunogen affinity purified
Clonality	Polyclonal
Isotype	IgG

Applications

The Abpromise guarantee

Our **Abpromise guarantee** covers the use of ab105395 in the following tested applications.

The application notes include recommended starting dilutions; optimal dilutions/concentrations should be determined by the end user.

Application	Abreviews	Notes
WB		Use a concentration of 1 - 2 µg/ml. Predicted molecular weight: 24 kDa.
ICC		Use a concentration of 10 - 20 µg/ml.

Target

Function

May play a role in placental development.

Tissue specificity

Expressed in placenta. Localizes primarily to differentiated syncytiotrophoblast throughout gestation as well as to a small population of villous cytotrophoblasts. Also detected in maternal blood and rapidly disappears following delivery, but is not detected in other adult or fetal tissues examined.

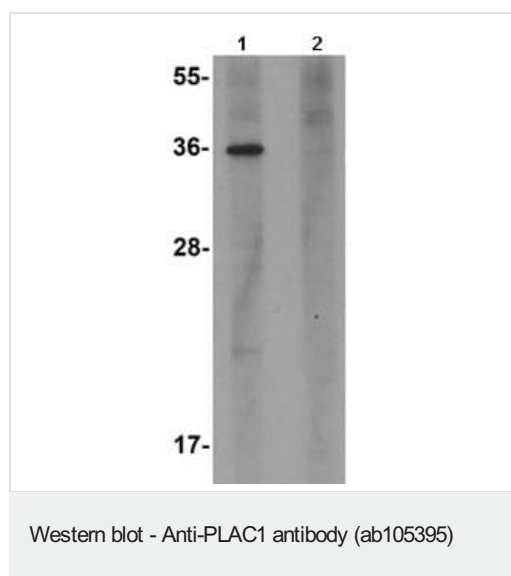
Sequence similarities

Belongs to the PLAC1 family.

Cellular localization

Secreted.

Images



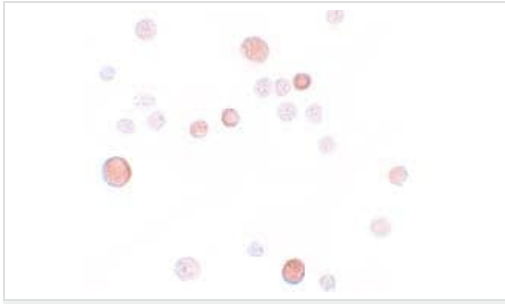
All lanes : Anti-PLAC1 antibody (ab105395) at 1 µg/ml

Lane 1 : Human placenta tissue lysate

Lane 2 : Human placenta tissue lysate with blocking peptide

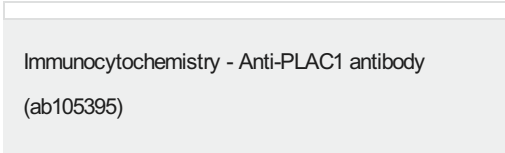
Lysates/proteins at 15 µg per lane.

Predicted band size: 24 kDa



Immunocytochemistry of PLAC1 in HeLa cells with ab105395 at 10 µg/ml.

Immunocytochemistry - Anti-PLAC1 antibody
(ab105395)



Immunofluorescence of PLAC1 in HeLa cells using ab105395 at 20 µg/ml.

Immunocytochemistry - Anti-PLAC1 antibody
(ab105395)

Please note: All products are "FOR RESEARCH USE ONLY. NOT FOR USE IN DIAGNOSTIC PROCEDURES"

Our Abpromise to you: Quality guaranteed and expert technical support

- Replacement or refund for products not performing as stated on the datasheet
- Valid for 12 months from date of delivery
- Response to your inquiry within 24 hours
- We provide support in Chinese, English, French, German, Japanese and Spanish
- Extensive multi-media technical resources to help you
- We investigate all quality concerns to ensure our products perform to the highest standards

If the product does not perform as described on this datasheet, we will offer a refund or replacement. For full details of the Abpromise, please visit <https://www.abcam.com/abpromise> or contact our technical team.

Terms and conditions

- Guarantee only valid for products bought direct from Abcam or one of our authorized distributors