

Anti-Placental lactogen antibody ab15554

★★★★★ [2 Abreviews](#) [7 References](#) [3 Images](#)

Overview

Product name	Anti-Placental lactogen antibody
Description	Rabbit polyclonal to Placental lactogen
Host species	Rabbit
Tested applications	Suitable for: WB, IHC-P
Species reactivity	Reacts with: Human
Immunogen	Full length native protein (purified) corresponding to Human Placental lactogen.
Positive control	Placenta
General notes	<p>This product is FOR RESEARCH USE ONLY. For commercial use, please contact partnerships@abcam.com.</p> <p>The Life Science industry has been in the grips of a reproducibility crisis for a number of years. Abcam is leading the way in addressing this with our range of recombinant monoclonal antibodies and knockout edited cell lines for gold-standard validation. Please check that this product meets your needs before purchasing.</p> <p>If you have any questions, special requirements or concerns, please send us an inquiry and/or contact our Support team ahead of purchase. Recommended alternatives for this product can be found below, along with publications, customer reviews and Q&As</p>

Properties

Form	Liquid
Storage instructions	Shipped at 4°C. Upon delivery aliquot and store at -20°C. Avoid freeze / thaw cycles.
Storage buffer	<p>pH: 7.60</p> <p>Preservative: 0.1% Sodium azide</p> <p>Constituents: PBS, 1% BSA</p>
Purity	Immunogen affinity purified
Clonality	Polyclonal
Isotype	IgG

Applications

The Abpromise guarantee

Our **Abpromise guarantee** covers the use of ab15554 in the following tested applications.

The application notes include recommended starting dilutions; optimal dilutions/concentrations should be determined by the end user.

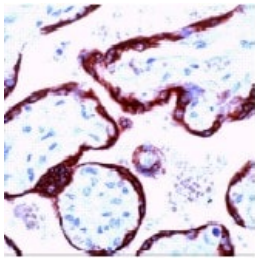
Application	Abreviews	Notes
WB	★★★★★ (1)	Use at an assay dependent concentration. Predicted molecular weight: 25 kDa.
IHC-P		1/250. Perform heat mediated antigen retrieval before commencing with IHC staining protocol.

Target

Relevance

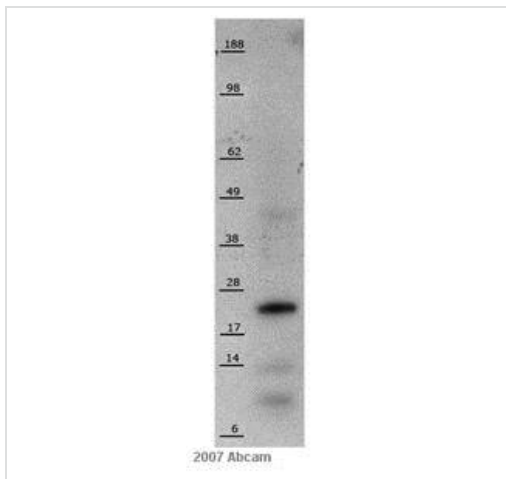
Function: Produced only during pregnancy and is involved in stimulating lactation, fetal growth and metabolism. Does not interact with GHR but only activates PRLR through zinc-induced dimerization. Similarity: Belongs to the somatotropin/prolactin family.

Images



ab15554 staining Human placenta by Immunohistochemistry (FFPE-sections).

Immunohistochemistry (Formalin/PFA-fixed paraffin-embedded sections) - Anti-Placental lactogen antibody (ab15554)



Western blot - Anti-Placental lactogen antibody
(ab15554)

This image is courtesy of an Abreview submitted by Dr Stoil Dimitrov

Anti-Placental lactogen antibody (ab15554) at 1/100 dilution +
Human recombinant hPL at 0.1 µg

Secondary

HRP conjugated donkey anti-rabbit IgG

Developed using the ECL technique.

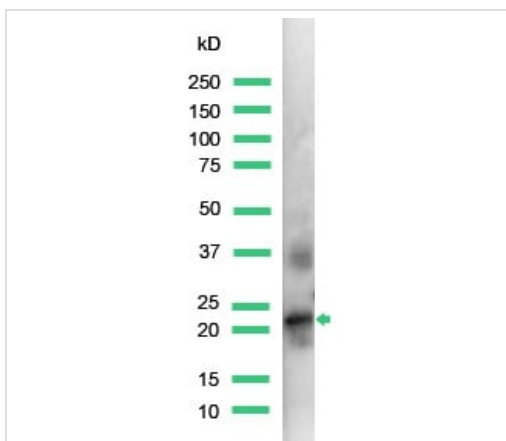
Performed under reducing conditions.

Predicted band size: 25 kDa

Observed band size: 25 kDa

Additional bands at: 10 kDa, 14 kDa, 45 kDa. We are unsure as to the identity of these extra bands.

Exposure time: 5 minutes



Western blot - Anti-Placental lactogen antibody
(ab15554)

Anti-Placental lactogen antibody (ab15554) at 1/25 dilution +
Human placenta lysate

Predicted band size: 25 kDa

Observed band size: 23 kDa

Please note: All products are "FOR RESEARCH USE ONLY. NOT FOR USE IN DIAGNOSTIC PROCEDURES"

Our Abpromise to you: Quality guaranteed and expert technical support

- Replacement or refund for products not performing as stated on the datasheet
- Valid for 12 months from date of delivery
- Response to your inquiry within 24 hours
- We provide support in Chinese, English, French, German, Japanese and Spanish
- Extensive multi-media technical resources to help you
- We investigate all quality concerns to ensure our products perform to the highest standards

If the product does not perform as described on this datasheet, we will offer a refund or replacement. For full details of the Abpromise,

please visit <https://www.abcam.com/abpromise> or contact our technical team.

Terms and conditions

- Guarantee only valid for products bought direct from Abcam or one of our authorized distributors