

Product datasheet

Anti-Plasma Kallikrein 1B antibody [13G11] ab1006

★★★★☆ [3 Abreviews](#) [11 References](#) [1 Image](#)

Overview

Product name	Anti-Plasma Kallikrein 1B antibody [13G11]
Description	Mouse monoclonal [13G11] to Plasma Kallikrein 1B
Host species	Mouse
Tested applications	Suitable for: IHC-P
Species reactivity	Reacts with: Human
Immunogen	Full length native protein (purified) corresponding to Human Plasma Kallikrein 1B. Database link: P03952.1
Epitope	The specific epitope, found on the prekallikrein / kallikrein heavy chain is involved in the interaction between prekallikrein and factor XIIa.
General notes	<p>This product was changed from ascites to tissue culture supernatant on 19/12/2018. Please note that the dilutions may need to be adjusted accordingly. If you have any questions please do not hesitate to contact our scientific support team.</p> <p>The Life Science industry has been in the grips of a reproducibility crisis for a number of years. Abcam is leading the way in addressing this with our range of recombinant monoclonal antibodies and knockout edited cell lines for gold-standard validation. Please check that this product meets your needs before purchasing.</p> <p>If you have any questions, special requirements or concerns, please send us an inquiry and/or contact our Support team ahead of purchase. Recommended alternatives for this product can be found below, along with publications, customer reviews and Q&As</p>

Properties

Form	Liquid
Storage instructions	Shipped at 4°C. Upon delivery aliquot and store at -20°C or -80°C. Avoid repeated freeze / thaw cycles.
Storage buffer	pH: 7.4
Purity	Protein G purified
Purification notes	Purified from TCS
Clonality	Monoclonal
Clone number	13G11

Isotype

IgG1

Applications

The Abpromise guarantee

Our **Abpromise guarantee** covers the use of ab1006 in the following tested applications.

The application notes include recommended starting dilutions; optimal dilutions/concentrations should be determined by the end user.

Application	Abreviews	Notes
IHC-P		Use a concentration of 4 µg/ml. Perform heat mediated antigen retrieval before commencing with IHC staining protocol.

Target

Function

The enzyme cleaves Lys-Arg and Arg-Ser bonds. It activates, in a reciprocal reaction, factor XII after its binding to a negatively charged surface. It also releases bradykinin from HMW kininogen and may also play a role in the renin-angiotensin system by converting prorenin into renin.

Involvement in disease

Defects in KLKB1 are the cause of prekallikrein deficiency (PKK deficiency) [MIM:612423]; also known as Fletcher factor deficiency. This disorder is a blood coagulation defect.

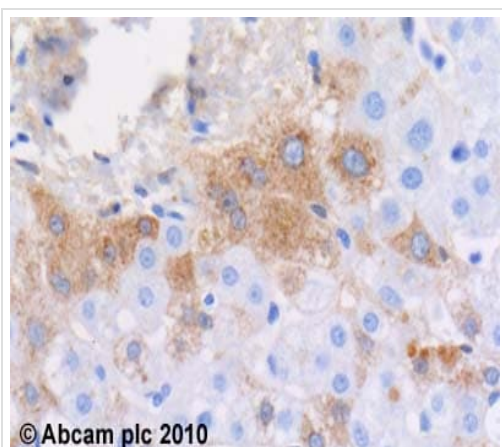
Sequence similarities

Belongs to the peptidase S1 family. Plasma kallikrein subfamily.
Contains 4 apple domains.
Contains 1 peptidase S1 domain.

Cellular localization

Secreted.

Images



Immunohistochemistry (Formalin/PFA-fixed paraffin-embedded sections) - Anti-Plasma Kallikrein 1B antibody [13G11] (ab1006)

ab1006 (4µg/ml) staining plasma kallikrein in human liver, using an automated system (DAKO Autostainer Plus). Using this protocol there is weak cytoplasmic staining of a subpopulation of hepatocytes.

Sections were rehydrated and antigen retrieved with the Dako 3 in 1 AR buffer citrate pH6.1 in a DAKO PT link. Slides were peroxidase blocked in 3% H₂O₂ in methanol for 10 mins. They were then blocked with Dako Protein block for 10 minutes (containing casein 0.25% in PBS) then incubated with primary antibody for 20 min and detected with Dako envision flex amplification kit for 30 minutes. Colorimetric detection was completed with Diaminobenzidine for 5 minutes. Slides were counterstained with Haematoxylin and coverslipped under DePeX. Please note that, for manual staining, optimization of primary antibody concentration and incubation time is recommended. Signal amplification may be required.

This image was generated using the ascites version of the product.

Please note: All products are "FOR RESEARCH USE ONLY. NOT FOR USE IN DIAGNOSTIC PROCEDURES"

Our Abpromise to you: Quality guaranteed and expert technical support

- Replacement or refund for products not performing as stated on the datasheet
- Valid for 12 months from date of delivery
- Response to your inquiry within 24 hours

- We provide support in Chinese, English, French, German, Japanese and Spanish
- Extensive multi-media technical resources to help you
- We investigate all quality concerns to ensure our products perform to the highest standards

If the product does not perform as described on this datasheet, we will offer a refund or replacement. For full details of the Abpromise, please visit <https://www.abcam.com/abpromise> or contact our technical team.

Terms and conditions

- Guarantee only valid for products bought direct from Abcam or one of our authorized distributors