

Product datasheet

Anti-Plastin L antibody ab210099

★★★★★ [2 Abreviews](#) [1 References](#) [2 Images](#)

Overview

Product name	Anti-Plastin L antibody
Description	Rabbit polyclonal to Plastin L
Host species	Rabbit
Tested applications	Suitable for: IHC-P, WB
Species reactivity	Reacts with: Zebrafish
Immunogen	Recombinant fragment within Zebrafish Plastin L aa 74-404. The exact sequence is proprietary. Database link: Q6P698
Positive control	Zebrafish kidney tissue lysate; zebrafish tissue.
General notes	<p>The Life Science industry has been in the grips of a reproducibility crisis for a number of years. Abcam is leading the way in addressing this with our range of recombinant monoclonal antibodies and knockout edited cell lines for gold-standard validation. Please check that this product meets your needs before purchasing.</p> <p>If you have any questions, special requirements or concerns, please send us an inquiry and/or contact our Support team ahead of purchase. Recommended alternatives for this product can be found below, along with publications, customer reviews and Q&As</p>

Properties

Form	Liquid
Storage instructions	Shipped at 4°C. Store at +4°C short term (1-2 weeks). Upon delivery aliquot. Store at -20°C long term. Avoid freeze / thaw cycle.
Storage buffer	<p>pH: 7.00</p> <p>Preservative: 0.025% Proclin 300</p> <p>Constituents: 79% PBS, 20% Glycerol (glycerin, glycerine)</p>
Purity	Immunogen affinity purified
Clonality	Polyclonal
Isotype	IgG

Applications

The Abpromise guarantee

Our **Abpromise guarantee** covers the use of ab210099 in the following tested applications.

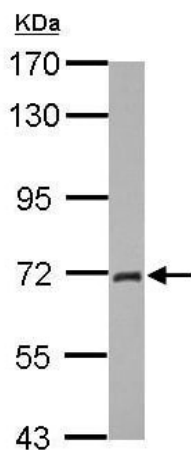
The application notes include recommended starting dilutions; optimal dilutions/concentrations should be determined by the end user.

Application	Abreviews	Notes
IHC-P		1/100 - 1/1000. Perform heat mediated antigen retrieval before commencing with IHC staining protocol. Suggested antigen retrieval using 1mM EDTA-NaOH (pH8.0) 95°C, 1 Hour
WB		1/500 - 1/3000. Predicted molecular weight: 70 kDa.

Target

Function	Actin-binding protein. Plays a role in the activation of T-cells in response to costimulation through TCR/CD3 and CD2 or CD28. Modulates the cell surface expression of IL2RA/CD25 and CD69.
Tissue specificity	Detected in intestinal microvilli, hair cell stereocilia, and fibroblast filopodia, in spleen and other lymph node-containing organs. Expressed in peripheral blood T lymphocytes, neutrophils, monocytes, B lymphocytes, and myeloid cells.
Sequence similarities	Contains 2 actin-binding domains. Contains 4 CH (calponin-homology) domains. Contains 2 EF-hand domains.
Post-translational modifications	Phosphorylated on a serine residue in response to costimulation through TCR/CD3 and CD2 or CD28. Serine phosphorylation promotes association with the actin cytoskeleton and targeting to peripheral cell projections. The N-terminus is blocked.
Cellular localization	Cytoplasm > cytoskeleton. Cell junction. Cell projection. Cell projection > ruffle membrane. Relocalizes to the immunological synapse between peripheral blood T lymphocytes and antibody-presenting cells in response to costimulation through TCR/CD3 and CD2 or CD28. Associated with the actin cytoskeleton at membrane ruffles (By similarity). Relocalizes to actin-rich cell projections upon serine phosphorylation.

Images

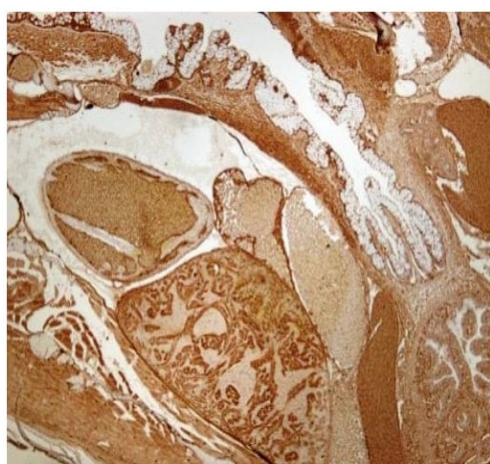


Western blot - Anti-Plastin L antibody (ab210099)

Anti-Plastin L antibody (ab210099) at 1/1000 dilution + Zebrafish kidney whole cell lysate at 30 µg

Predicted band size: 70 kDa

7.5% SDS PAGE



Immunohistochemistry (Formalin/PFA-fixed paraffin-embedded sections) - Anti-Plastin L antibody (ab210099)

Immunohistochemical analysis of paraffin embedded Zebrafish tissue, labeling Plastin L using ab210099 at 1/300 dilution.

Please note: All products are "FOR RESEARCH USE ONLY. NOT FOR USE IN DIAGNOSTIC PROCEDURES"

Our Abpromise to you: Quality guaranteed and expert technical support

- Replacement or refund for products not performing as stated on the datasheet
- Valid for 12 months from date of delivery
- Response to your inquiry within 24 hours
- We provide support in Chinese, English, French, German, Japanese and Spanish
- Extensive multi-media technical resources to help you
- We investigate all quality concerns to ensure our products perform to the highest standards

If the product does not perform as described on this datasheet, we will offer a refund or replacement. For full details of the Abpromise, please visit <https://www.abcam.com/abpromise> or contact our technical team.

Terms and conditions

- Guarantee only valid for products bought direct from Abcam or one of our authorized distributors