

Product datasheet

Anti-Plastin L antibody ab236280

[3 Images](#)

Overview

Product name	Anti-Plastin L antibody
Description	Rabbit polyclonal to Plastin L
Host species	Rabbit
Tested applications	Suitable for: WB, ICC/IF, IHC-P
Species reactivity	Reacts with: Mouse, Human
Immunogen	Recombinant full length protein corresponding to Human Plastin L aa 1-650. Database link: P13796 Run BLAST with Run BLAST with
Positive control	WB: HL-60, THP-1, K562, jurkat, HeLa and NIH/3T3 whole cell lysate. IHC-P: Human tonsil tissue. ICC/IF: A549 cells.
General notes	<p>The Life Science industry has been in the grips of a reproducibility crisis for a number of years. Abcam is leading the way in addressing this with our range of recombinant monoclonal antibodies and knockout edited cell lines for gold-standard validation. Please check that this product meets your needs before purchasing.</p> <p>If you have any questions, special requirements or concerns, please send us an inquiry and/or contact our Support team ahead of purchase. Recommended alternatives for this product can be found below, along with publications, customer reviews and Q&As</p>

Properties

Form	Liquid
Storage instructions	Shipped at 4°C. Store at +4°C short term (1-2 weeks). Upon delivery aliquot. Store at -20°C long term. Avoid freeze / thaw cycle.
Storage buffer	pH: 7.40 Preservative: 0.03% Proclin 300 Constituents: PBS, 50% Glycerol (glycerin, glycerine)
Purity	Protein G purified
Purification notes	Purity >95%
Clonality	Polyclonal
Isotype	IgG

Applications

The Abpromise guarantee Our **Abpromise guarantee** covers the use of ab236280 in the following tested applications.

The application notes include recommended starting dilutions; optimal dilutions/concentrations should be determined by the end user.

Application	Abreviews	Notes
WB		1/500 - 1/2000. Predicted molecular weight: 70 kDa.
ICC/IF		1/50 - 1/200.
IHC-P		1/20 - 1/200.

Target

Function Actin-binding protein. Plays a role in the activation of T-cells in response to costimulation through TCR/CD3 and CD2 or CD28. Modulates the cell surface expression of IL2RA/CD25 and CD69.

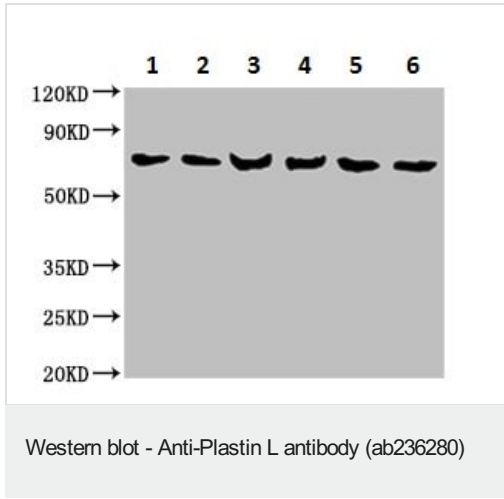
Tissue specificity Detected in intestinal microvilli, hair cell stereocilia, and fibroblast filopodia, in spleen and other lymph node-containing organs. Expressed in peripheral blood T lymphocytes, neutrophils, monocytes, B lymphocytes, and myeloid cells.

Sequence similarities Contains 2 actin-binding domains.
Contains 4 CH (calponin-homology) domains.
Contains 2 EF-hand domains.

Post-translational modifications Phosphorylated on a serine residue in response to costimulation through TCR/CD3 and CD2 or CD28. Serine phosphorylation promotes association with the actin cytoskeleton and targeting to peripheral cell projections.
The N-terminus is blocked.

Cellular localization Cytoplasm > cytoskeleton. Cell junction. Cell projection. Cell projection > ruffle membrane.
Relocalizes to the immunological synapse between peripheral blood T lymphocytes and antibody-presenting cells in response to costimulation through TCR/CD3 and CD2 or CD28. Associated with the actin cytoskeleton at membrane ruffles (By similarity). Relocalizes to actin-rich cell projections upon serine phosphorylation.

Images



All lanes : Anti-Plastin L antibody (ab236280) at 1/500 dilution

Lane 1 : HL-60 (human promyelocytic leukemia cell line) whole cell lysate

Lane 2 : THP-1 (Human monocytic leukemia cell line) whole cell lysate

Lane 3 : K562 (Human chronic myelogenous leukemia cell line from bone marrow) whole cell lysate

Lane 4 : Jurkat (Human T cell leukemia cell line from peripheral blood) whole cell lysate

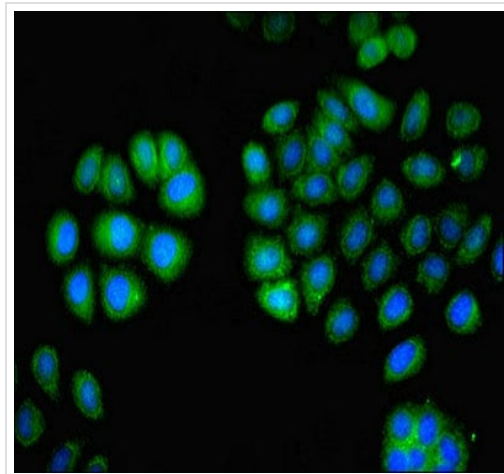
Lane 5 : HeLa (human epithelial cell line from cervix adenocarcinoma) whole cell lysate

Lane 6 : NIH/3T3 (mouse embryo fibroblast cell line) whole cell lysate

Secondary

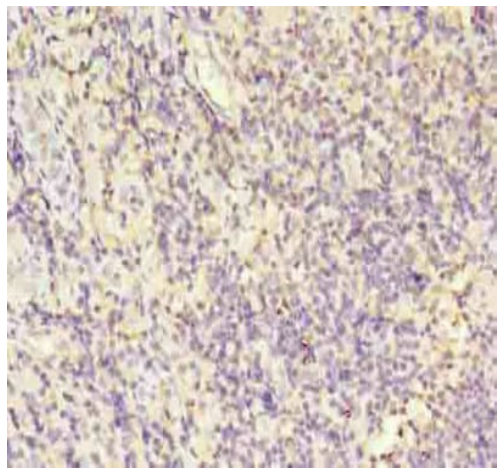
All lanes : Goat polyclonal to rabbit IgG at 1/10000 dilution

Predicted band size: 70 kDa



A549 (human lung carcinoma cell line) cells labeling Plastin L (green) using ab236280 at 1/100 dilution in ICC/IF. Secondary antibody is Alexa Fluor[®] 488-conjugated Goat Anti-Rabbit IgG (H+L).

Immunocytochemistry/ Immunofluorescence - Anti-Plastin L antibody (ab236280)



Paraffin-embedded human tonsil tissue stained for Plastin L using ab236280 at 1/100 dilution in immunohistochemical analysis.

Immunohistochemistry (Formalin/PFA-fixed paraffin-embedded sections) - Anti-Plastin L antibody (ab236280)

Please note: All products are "FOR RESEARCH USE ONLY. NOT FOR USE IN DIAGNOSTIC PROCEDURES"

Our Abpromise to you: Quality guaranteed and expert technical support

- Replacement or refund for products not performing as stated on the datasheet
- Valid for 12 months from date of delivery
- Response to your inquiry within 24 hours

- We provide support in Chinese, English, French, German, Japanese and Spanish
- Extensive multi-media technical resources to help you
- We investigate all quality concerns to ensure our products perform to the highest standards

If the product does not perform as described on this datasheet, we will offer a refund or replacement. For full details of the Abpromise, please visit <https://www.abcam.com/abpromise> or contact our technical team.

Terms and conditions

- Guarantee only valid for products bought direct from Abcam or one of our authorized distributors