

## Product datasheet

# Anti-Plastin L antibody [EPR4278] ab109129

Recombinant RabMAb

[2 References](#) [4 Images](#)

### Overview

<b>Product name</b>	Anti-Plastin L antibody [EPR4278]
<b>Description</b>	Rabbit monoclonal [EPR4278] to Plastin L
<b>Host species</b>	Rabbit
<b>Tested applications</b>	<b>Suitable for:</b> WB, IHC-P, Flow Cyt (Intra)
<b>Species reactivity</b>	<b>Reacts with:</b> Human
<b>Immunogen</b>	Synthetic peptide. This information is proprietary to Abcam and/or its suppliers.
<b>Positive control</b>	WB: THP-1, Jurkat, and K562 cell lysates, IHC-P: Human tonsil tissue; Flow Cyt (intra): MDA-MB-435S cells
<b>General notes</b>	<p>This product is a recombinant monoclonal antibody, which offers several advantages including:</p> <ul style="list-style-type: none"> <li>- High batch-to-batch consistency and reproducibility</li> <li>- Improved sensitivity and specificity</li> <li>- Long-term security of supply</li> <li>- Animal-free production</li> </ul> <p>For more information <a href="#">see here</a>.</p> <p>Our RabMAb<sup>®</sup> technology is a patented hybridoma-based technology for making rabbit monoclonal antibodies. For details on our patents, please refer to <a href="#">RabMAb<sup>®</sup> patents</a>.</p> <p>Mouse, Rat: We have preliminary internal testing data to indicate this antibody may not react with these species. Please contact us for more information.</p>

### Properties

<b>Form</b>	Liquid
<b>Storage instructions</b>	Shipped at 4°C. Store at -20°C. Stable for 12 months at -20°C.
<b>Storage buffer</b>	<p>pH: 7.20</p> <p>Preservative: 0.05% Sodium azide</p> <p>Constituents: 0.1% BSA, 40% Glycerol (glycerin, glycerine), 9.85% Tris glycine, 50% Tissue culture supernatant</p>
<b>Purity</b>	Protein A purified
<b>Clonality</b>	Monoclonal

**Clone number**                      EPR4278  
**Isotype**                                IgG

## Applications

**The Abpromise guarantee**            Our **Abpromise guarantee** covers the use of ab109129 in the following tested applications.

The application notes include recommended starting dilutions; optimal dilutions/concentrations should be determined by the end user.

Application	Abreviews	Notes
<b>WB</b>		1/10000 - 1/50000. Detects a band of approximately 70 kDa (predicted molecular weight: 70 kDa).
<b>IHC-P</b>		1/250 - 1/500. Perform heat mediated antigen retrieval before commencing with IHC staining protocol.
<b>Flow Cyt (Intra)</b>		1/1000.

## Target

**Function**                                    Actin-binding protein. Plays a role in the activation of T-cells in response to costimulation through TCR/CD3 and CD2 or CD28. Modulates the cell surface expression of IL2RA/CD25 and CD69.

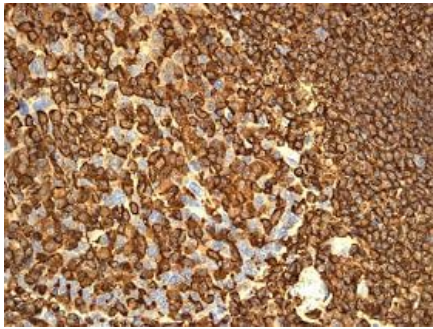
**Tissue specificity**                        Detected in intestinal microvilli, hair cell stereocilia, and fibroblast filopodia, in spleen and other lymph node-containing organs. Expressed in peripheral blood T lymphocytes, neutrophils, monocytes, B lymphocytes, and myeloid cells.

**Sequence similarities**                      Contains 2 actin-binding domains.  
Contains 4 CH (calponin-homology) domains.  
Contains 2 EF-hand domains.

**Post-translational modifications**        Phosphorylated on a serine residue in response to costimulation through TCR/CD3 and CD2 or CD28. Serine phosphorylation promotes association with the actin cytoskeleton and targeting to peripheral cell projections.  
The N-terminus is blocked.

**Cellular localization**                      Cytoplasm > cytoskeleton. Cell junction. Cell projection. Cell projection > ruffle membrane.  
Relocalizes to the immunological synapse between peripheral blood T lymphocytes and antibody-presenting cells in response to costimulation through TCR/CD3 and CD2 or CD28. Associated with the actin cytoskeleton at membrane ruffles (By similarity). Relocalizes to actin-rich cell projections upon serine phosphorylation.

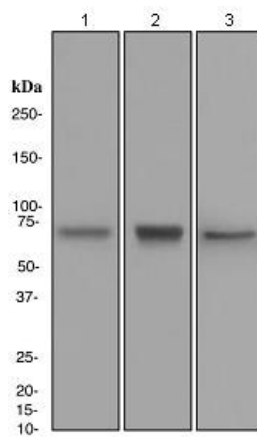
## Images



Immunohistochemistry (Formalin/PFA-fixed paraffin-embedded sections) - Anti-Plastin L antibody [EPR4278] (ab109129)

Immunohistochemical staining of paraffin-embedded Human tonsil tissue using ab109129 at a dilution of 1/250.

Perform heat mediated antigen retrieval before commencing with IHC staining protocol.



Western blot - Anti-Plastin L antibody [EPR4278] (ab109129)

**All lanes** : Anti-Plastin L antibody [EPR4278] (ab109129) at 1/10000 dilution

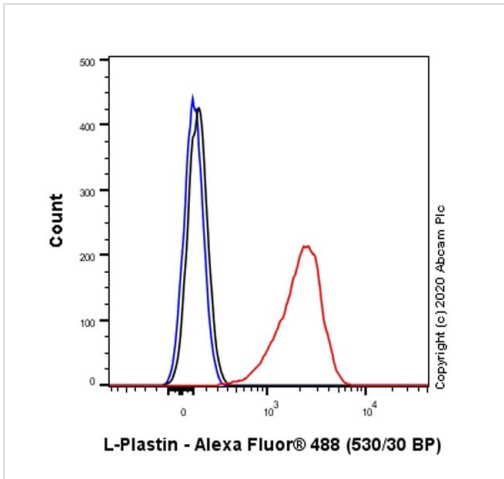
**Lane 1** : THP-1 cell lysate

**Lane 2** : Jurkat cell lysate

**Lane 3** : K562 cell lysate

Lysates/proteins at 10 µg per lane.




**Predicted band size:** 70 kDa



Flow Cytometry analysis of MDA-MB-435S (Human mammary gland ductal carcinoma melanocyte) cells labeling Plastin L with purified ab109129 at 1/1000 dilution (1 µg/mL) (Red). Cells were fixed with 4% Paraformaldehyde and permeabilised with 90% Methanol. A Goat anti rabbit IgG (Alexa Fluor® 488, **ab150077**) secondary antibody was used at 1/2000. Isotype control - Rabbit monoclonal IgG (Black). Unlabeled control - Cell without incubation with primary antibody and secondary antibody (Blue).

Flow Cytometry (Intracellular) - Anti-Plastin L antibody [EPR4278] (ab109129)

Why choose a recombinant antibody?

 <p><b>Research with confidence</b> Consistent and reproducible results</p>	 <p><b>Long-term and scalable supply</b> Recombinant technology</p>
 <p><b>Success from the first experiment</b> Confirmed specificity</p>	 <p><b>Ethical standards compliant</b> Animal-free production</p>

Anti-Plastin L antibody [EPR4278] (ab109129)

**Please note:** All products are "FOR RESEARCH USE ONLY. NOT FOR USE IN DIAGNOSTIC PROCEDURES"

**Our Abpromise to you: Quality guaranteed and expert technical support**

- Replacement or refund for products not performing as stated on the datasheet
- Valid for 12 months from date of delivery
- Response to your inquiry within 24 hours
- We provide support in Chinese, English, French, German, Japanese and Spanish
- Extensive multi-media technical resources to help you
- We investigate all quality concerns to ensure our products perform to the highest standards

If the product does not perform as described on this datasheet, we will offer a refund or replacement. For full details of the Abpromise, please visit <https://www.abcam.com/abpromise> or contact our technical team.

## Terms and conditions

---

- Guarantee only valid for products bought direct from Abcam or one of our authorized distributors