

## Product datasheet

### Anti-PLCD1 antibody [EPR8430] ab134936

Recombinant RabMAb

[3 References](#) [4 Images](#)

#### Overview

Product name	Anti-PLCD1 antibody [EPR8430]
Description	Rabbit monoclonal [EPR8430] to PLCD1
Host species	Rabbit
Tested applications	<b>Suitable for:</b> WB, IHC-P <b>Unsuitable for:</b> ICC/IF
Species reactivity	<b>Reacts with:</b> Human
Immunogen	Synthetic peptide within Human PLCD1 aa 200-300. The exact sequence is proprietary.
Positive control	Human brain and testis tissues; HeLa and Human fetal lung lysates.
General notes	<p>This product is a recombinant monoclonal antibody, which offers several advantages including:</p> <ul style="list-style-type: none"> <li>- High batch-to-batch consistency and reproducibility</li> <li>- Improved sensitivity and specificity</li> <li>- Long-term security of supply</li> <li>- Animal-free production</li> </ul> <p>For more information <a href="#">see here</a>.</p> <p>Our RabMAb<sup>®</sup> technology is a patented hybridoma-based technology for making rabbit monoclonal antibodies. For details on our patents, please refer to <a href="#">RabMAb<sup>®</sup> patents</a>.</p> <p>Mouse, Rat: We have preliminary internal testing data to indicate this antibody may not react with these species. Please contact us for more information.</p>

#### Properties

Form	Liquid
Storage instructions	Shipped at 4°C. Store at -20°C. Stable for 12 months at -20°C.
Storage buffer	pH: 7.2 Preservative: 0.01% Sodium azide Constituents: 9% PBS, 40% Glycerol (glycerin, glycerine), 0.05% BSA, 50% Tissue culture supernatant
Purity	Protein A purified
Clonality	Monoclonal

**Clone number** EPR8430

**Isotype** IgG

## Applications

**The Abpromise guarantee** Our **Abpromise guarantee** covers the use of ab134936 in the following tested applications.

The application notes include recommended starting dilutions; optimal dilutions/concentrations should be determined by the end user.

Application	Abreviews	Notes
WB		1/1000 - 1/10000. Predicted molecular weight: 86 kDa.
IHC-P		1/50 - 1/100. Perform heat mediated antigen retrieval with citrate buffer pH 6 before commencing with IHC staining protocol. For antigen retrieval: heat up to 98°C, below boiling, and then let cool for 10-20 min. Use of an HRP/AP polymerized secondary antibody is recommended.

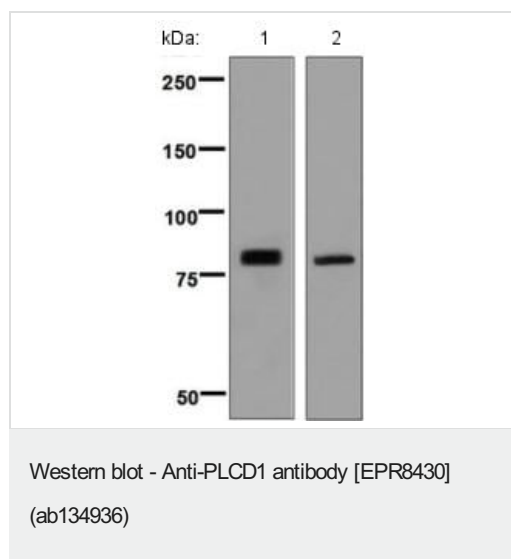
**Application notes** Is unsuitable for ICC/IF.

## Target

**Relevance** PLCD1 acts as a signal transducer that generates 2 second messengers, diacylglycerol and inositol 1,4,5-trisphosphate, by hydrolyzing inositol phospholipids. The PLC family of enzymes are diverse and vary in structure and tissue distribution.

**Cellular localization** Cytoplasmic

## Images



**All lanes** : Anti-PLCD1 antibody [EPR8430] (ab134936) at 1/1000 dilution

**Lane 1** : HeLa cell lysate

**Lane 2** : Human fetal lung tissue lysate

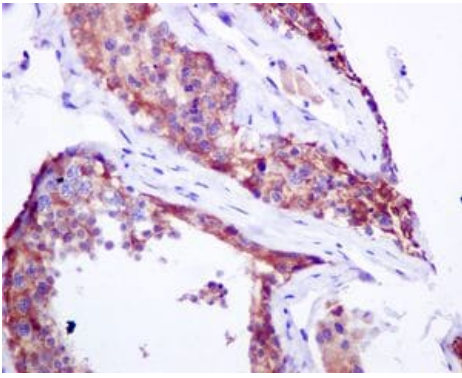
Lysates/proteins at 10 µg per lane.

### Secondary

**All lanes** : Standard HRP labelled goat anti-rabbit at 1/2000 dilution

Developed using the ECL technique.

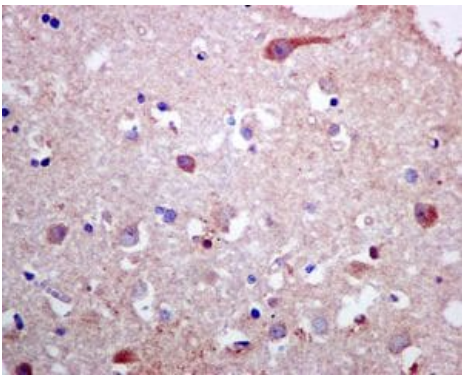
**Predicted band size:** 86 kDa



Immunohistochemistry (Formalin/PFA-fixed paraffin-embedded sections) - Anti-PLCD1 antibody  
[EPR8430] (ab134936)

Immunohistochemical analysis of paraffin-embedded, formalin-fixed Human testis tissue, labelling PLCD1 using ab134936 at a 1/50 dilution.

Perform heat mediated antigen retrieval with citrate buffer pH 6 before commencing with IHC staining protocol.

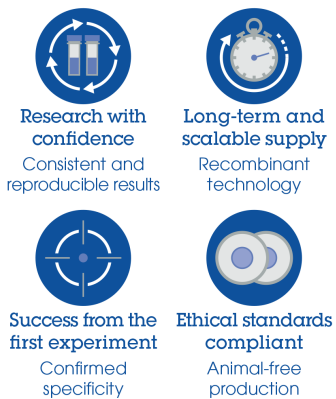


Immunohistochemistry (Formalin/PFA-fixed paraffin-embedded sections) - Anti-PLCD1 antibody  
[EPR8430] (ab134936)

Immunohistochemical analysis of paraffin-embedded, formalin-fixed Human brain tissue, labelling PLCD1 using **ab134931** at a 1/50 dilution.

Perform heat mediated antigen retrieval with citrate buffer pH 6 before commencing with IHC staining protocol.

### Why choose a recombinant antibody?



Anti-PLCD1 antibody [EPR8430] (ab134936)

**Please note:** All products are "FOR RESEARCH USE ONLY. NOT FOR USE IN DIAGNOSTIC PROCEDURES"

## **Our Abpromise to you: Quality guaranteed and expert technical support**

---

- Replacement or refund for products not performing as stated on the datasheet
- Valid for 12 months from date of delivery
- Response to your inquiry within 24 hours
  
- We provide support in Chinese, English, French, German, Japanese and Spanish
- Extensive multi-media technical resources to help you
- We investigate all quality concerns to ensure our products perform to the highest standards

If the product does not perform as described on this datasheet, we will offer a refund or replacement. For full details of the Abpromise, please visit <https://www.abcam.com/abpromise> or contact our technical team.

## **Terms and conditions**

---

- Guarantee only valid for products bought direct from Abcam or one of our authorized distributors