

## Product datasheet

# Anti-PLCL1 antibody [EPR11213] ab157200

Recombinant RabMAb

★★★★☆ [1 Abreviews](#) [1 References](#) [5 Images](#)

### Overview

---

<b>Product name</b>	Anti-PLCL1 antibody [EPR11213]
<b>Description</b>	Rabbit monoclonal [EPR11213] to PLCL1
<b>Host species</b>	Rabbit
<b>Tested applications</b>	<b>Suitable for:</b> Flow Cyt (Intra), WB, ICC/IF, IP <b>Unsuitable for:</b> IHC-P
<b>Species reactivity</b>	<b>Reacts with:</b> Human
<b>Immunogen</b>	Recombinant fragment corresponding to Human PLCL1.
<b>Positive control</b>	Jurkat cell lysate; fetal brain, fetal kidney and fetal lung cell lysates; Jurkat cells.
<b>General notes</b>	<p>This product is a recombinant monoclonal antibody, which offers several advantages including:</p> <ul style="list-style-type: none"><li>- High batch-to-batch consistency and reproducibility</li><li>- Improved sensitivity and specificity</li><li>- Long-term security of supply</li><li>- Animal-free production</li></ul> <p>For more information <a href="#">see here</a>.</p> <p>Our RabMAb<sup>®</sup> technology is a patented hybridoma-based technology for making rabbit monoclonal antibodies. For details on our patents, please refer to <a href="#">RabMAb<sup>®</sup> patents</a>.</p> <p>Mouse, Rat: We have preliminary internal testing data to indicate this antibody may not react with these species. Please contact us for more information.</p>

### Properties

---

<b>Form</b>	Liquid
<b>Storage instructions</b>	Shipped at 4°C. Store at -20°C.
<b>Storage buffer</b>	pH: 7.2 Preservative: 0.01% Sodium azide Constituents: 9% PBS, 40% Glycerol (glycerin, glycerine), 0.05% BSA, 50% Tissue culture supernatant
<b>Purity</b>	Tissue culture supernatant
<b>Clonality</b>	Monoclonal

Clone number                   EPR11213  
Isotype                            IgG

## Applications

**The Abpromise guarantee**           Our **Abpromise guarantee** covers the use of ab157200 in the following tested applications.

The application notes include recommended starting dilutions; optimal dilutions/concentrations should be determined by the end user.

Application	Abreviews	Notes
Flow Cyt (Intra)		1/100 - 1/500. <b>ab172730</b> - Rabbit monoclonal IgG, is suitable for use as an isotype control with this antibody.
WB		1/10000 - 1/50000. Predicted molecular weight: 123 kDa.
ICC/IF		1/100 - 1/250.
IP		1/10 - 1/100.

**Application notes**                    Is unsuitable for IHC-P.

## Target

**Function**                               Involved in an inositol phospholipid-based intracellular signaling cascade. Shows no PLC activity to phosphatidylinositol 4,5-bisphosphate and phosphatidylinositol. Component in the phospho-dependent endocytosis process of GABA A receptor (By similarity). Regulates the turnover of receptors and thus contributes to the maintenance of GABA-mediated synaptic inhibition. Its aberrant expression could contribute to the genesis and progression of lung carcinoma. Acts as a inhibitor of PPP1C.

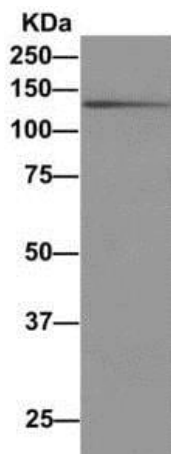
**Tissue specificity**                   Expressed in a variety of fetal and adult organs including brain, lung and kidney. Its expression was greatly reduced in small and non-small cell lung carcinoma. Isoform 1 is predominantly expressed in brain.

**Sequence similarities**                Contains 1 C2 domain.  
Contains 1 PH domain.  
Contains 1 PI-PLC X-box domain.  
Contains 1 PI-PLC Y-box domain.

**Post-translational modifications**   Phosphorylated by the catalytic subunit of PKA. Phosphorylation of Thr-93 resulted in dissociation of PPP1C from PRIP1.

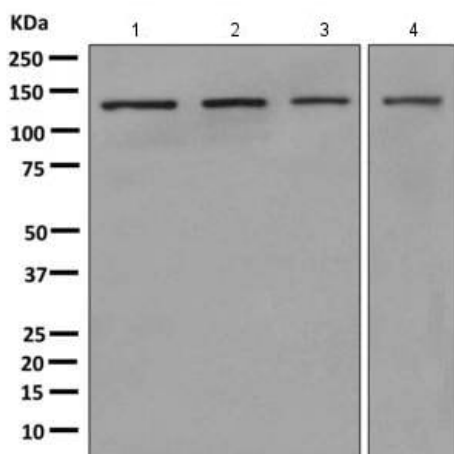
**Cellular localization**                Cytoplasm.

## Images



Immunoprecipitation - Anti-PLCL1 antibody  
[EPR11213] (ab157200)

Western blot analysis of Immunoprecipitation pellet from Human fetal brain lysate showing PLCL1, using ab157200 at 1/10 dilution for IP.



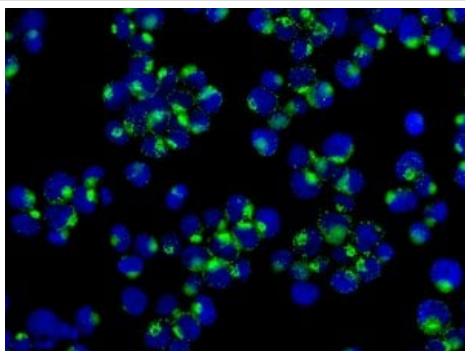
Western blot - Anti-PLCL1 antibody [EPR11213]  
(ab157200)

**All lanes :** Anti-PLCL1 antibody [EPR11213] (ab157200) at 1/10000 dilution

- Lane 1 :** Human fetal brain tissue lysate
- Lane 2 :** Human fetal kidney tissue lysate
- Lane 3 :** Human fetal lung tissue lysate
- Lane 4 :** Jurkat lysate

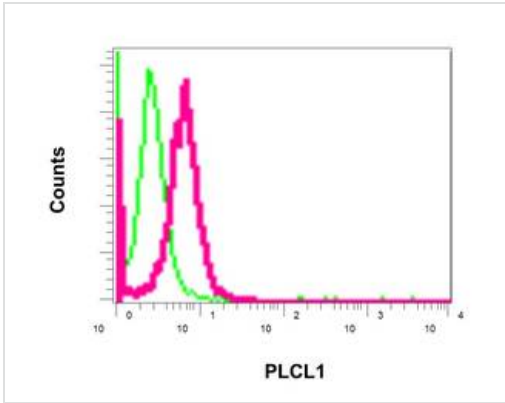
Lysates/proteins at 10 µg per lane.

**Predicted band size:** 123 kDa



Immunocytochemistry/ Immunofluorescence - Anti-PLCL1 antibody [EPR11213] (ab157200)





Immunofluorescence analysis of Jurkat cells, labeling PLCL1 using ab157200 at a 1/100 dilution.



Intracellular Flow Cytometry analysis of permeabilized Jurkat cells labeling PLCL1 (red), using ab157200 at a 1/100 dilution, and negative control cells probed with a Rabbit IgG (green)

Flow Cytometry (Intracellular) - Anti-PLCL1 antibody [EPR11213] (ab157200)

Why choose a recombinant antibody?

 <p><b>Research with confidence</b> Consistent and reproducible results</p>	 <p><b>Long-term and scalable supply</b> Recombinant technology</p>
 <p><b>Success from the first experiment</b> Confirmed specificity</p>	 <p><b>Ethical standards compliant</b> Animal-free production</p>

Anti-PLCL1 antibody [EPR11213] (ab157200)

**Please note:** All products are "FOR RESEARCH USE ONLY. NOT FOR USE IN DIAGNOSTIC PROCEDURES"

### Our Abpromise to you: Quality guaranteed and expert technical support

- Replacement or refund for products not performing as stated on the datasheet
- Valid for 12 months from date of delivery
- Response to your inquiry within 24 hours
- We provide support in Chinese, English, French, German, Japanese and Spanish
- Extensive multi-media technical resources to help you
- We investigate all quality concerns to ensure our products perform to the highest standards

If the product does not perform as described on this datasheet, we will offer a refund or replacement. For full details of the Abpromise, please visit <https://www.abcam.com/abpromise> or contact our technical team.

### Terms and conditions

- Guarantee only valid for products bought direct from Abcam or one of our authorized distributors