




Product datasheet

Anti-Plexin A1 antibody [7B8H9] ab233826

3 Images

Overview

Product name	Anti-Plexin A1 antibody [7B8H9]
Description	Mouse monoclonal [7B8H9] to Plexin A1
Host species	Mouse
Tested applications	Suitable for: WB, Flow Cyt
Species reactivity	Reacts with: Human Predicted to work with: Mouse 
Immunogen	Recombinant fragment corresponding to Human Plexin A1 aa 1100-1200. Expressed in E.coli. Database link: Q9UIW  Run BLAST with  Run BLAST with
Positive control	WB: Recombinant human Plexin A1 (AA: 1100-1200) and Plexin A1 (AA: 1100-1200)-hlgGfC transfected HEK-293 whole cell lysate. Flow: HeLa cells.
General notes	<p>The Life Science industry has been in the grips of a reproducibility crisis for a number of years. Abcam is leading the way in addressing this with our range of recombinant monoclonal antibodies and knockout edited cell lines for gold-standard validation. Please check that this product meets your needs before purchasing.</p> <p>If you have any questions, special requirements or concerns, please send us an inquiry and/or contact our Support team ahead of purchase. Recommended alternatives for this product can be found below, along with publications, customer reviews and Q&As</p>

Properties

Form	Liquid
Storage instructions	Shipped at 4°C. Store at +4°C short term (1-2 weeks). Upon delivery aliquot. Store at -20°C long term. Avoid freeze / thaw cycle.
Storage buffer	Preservative: 0.05% Sodium azide Constituent: PBS
Purity	Protein G purified
Clonality	Monoclonal
Clone number	7B8H9
Isotype	IgG2b

Applications

The Abpromise guarantee

Our **Abpromise guarantee** covers the use of ab233826 in the following tested applications.

The application notes include recommended starting dilutions; optimal dilutions/concentrations should be determined by the end user.

Application	Abreviews	Notes
WB		1/500 - 1/2000.
Flow Cyt		1/200 - 1/400.

Target

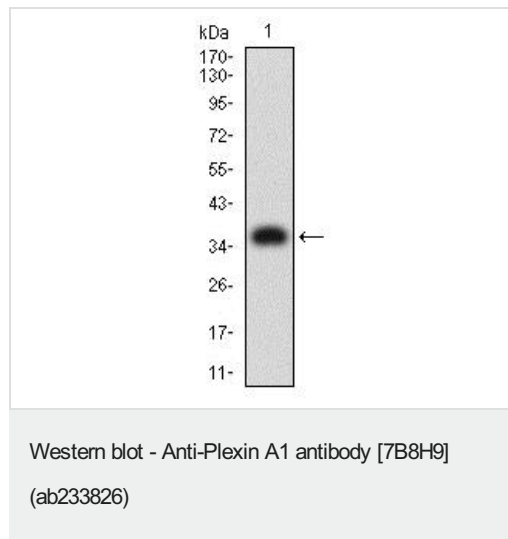
Relevance

Function: Coreceptor for SEMA3A, SEMA3C, SEMA3F and SEMA6D. Necessary for signaling by class 3 semaphorins and subsequent remodeling of the cytoskeleton. Plays a role in axon guidance, invasive growth and cell migration. Class 3 semaphorins bind to a complex composed of a neuropilin and a plexin. The plexin modulates the affinity of the complex for specific semaphorins, and its cytoplasmic domain is required for the activation of down-stream signaling events in the cytoplasm. Tissue specificity: Detected in fetal brain, lung, liver and kidney. Similarity: Belongs to the plexin family. Contains 4 IPT/TIG domains. Contains 1 Sema domain.

Cellular localization

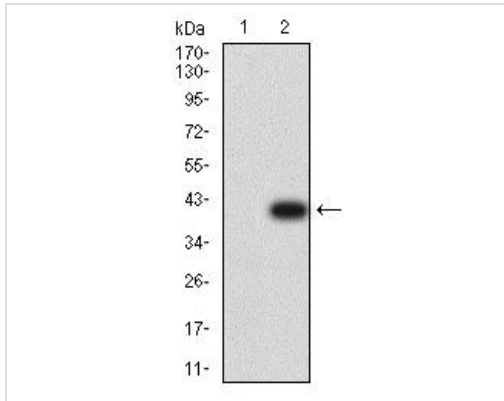
Cell Membrane

Images



Anti-Plexin A1 antibody [7B8H9] (ab233826) at 1/500 dilution + Recombinant human Plexin A1 (AA: 1100-1200) protein.

Developed using the ECL technique.



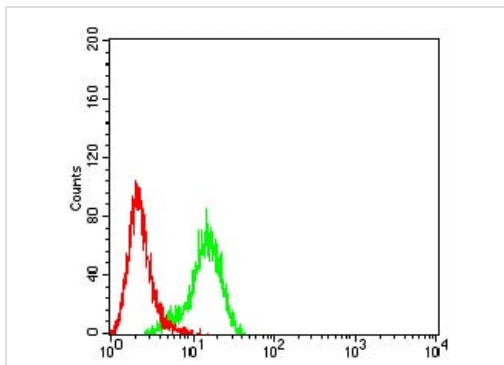
Western blot - Anti-Plexin A1 antibody [7B8H9] (ab233826)

All lanes : Anti-Plexin A1 antibody [7B8H9] (ab233826) at 1/500 dilution

Lane 1 : HEK-293 (human epithelial cell line from embryonic kidney) whole cell lysate

Lane 2 : Plexin A1 (AA: 1100-1200)-hlgGFc transfected HEK-293 whole cell lysate

Developed using the ECL technique.



Flow Cytometry - Anti-Plexin A1 antibody [7B8H9] (ab233826)

Flow cytometric analysis of HeLa (human epithelial cell line from cervix adenocarcinoma) cell line labeling Plexin A1 with ab233826 at 1/200 dilution (green) compared with a negative control (red).

Please note: All products are "FOR RESEARCH USE ONLY. NOT FOR USE IN DIAGNOSTIC PROCEDURES"

Our Abpromise to you: Quality guaranteed and expert technical support

- Replacement or refund for products not performing as stated on the datasheet
- Valid for 12 months from date of delivery
- Response to your inquiry within 24 hours
- We provide support in Chinese, English, French, German, Japanese and Spanish
- Extensive multi-media technical resources to help you
- We investigate all quality concerns to ensure our products perform to the highest standards

If the product does not perform as described on this datasheet, we will offer a refund or replacement. For full details of the Abpromise, please visit <https://www.abcam.com/abpromise> or contact our technical team.

Terms and conditions

- Guarantee only valid for products bought direct from Abcam or one of our authorized distributors