


Product datasheet

Anti-Plexin A1 antibody [EPR3449] ab92346

Recombinant **RabMAb**

★★★★★ [2 Abreviews](#) [1 References](#) [3 Images](#)

Overview

Product name	Anti-Plexin A1 antibody [EPR3449]
Description	Rabbit monoclonal [EPR3449] to Plexin A1
Host species	Rabbit
Specificity	ab92346 is expected to cross react with Plexin A3 and A4 due to 100% immunogen homology with Plexin A3 and 87.5 % with Plexin A4,however not tested experimentally.
Tested applications	Suitable for: Flow Cyt (Intra), WB Unsuitable for: IHC-P or IP
Species reactivity	Reacts with: Human Predicted to work with: Mouse, Rat 
Immunogen	Synthetic peptide within Human Plexin A1 aa 100-200. The exact sequence is proprietary.
Positive control	WB: KS62, HUVEC and HepG2 whole cell lysate (ab7900); fetal brain tissue lysate Flow Cyt (intra): K562 cells
General notes	This product is a recombinant monoclonal antibody, which offers several advantages including: <ul style="list-style-type: none"> - High batch-to-batch consistency and reproducibility - Improved sensitivity and specificity - Long-term security of supply - Animal-free production For more information see here . Our RabMAb [®] technology is a patented hybridoma-based technology for making rabbit monoclonal antibodies. For details on our patents, please refer to RabMAb[®] patents .

Properties

Form	Liquid
Storage instructions	Shipped at 4°C. Upon delivery aliquot and store at -20°C. Avoid repeated freeze / thaw cycles.
Storage buffer	pH: 7.20 Preservative: 0.05% Sodium azide Constituents: 0.1% BSA, 40% Glycerol (glycerin, glycerine), 9.85% Tris glycine, 50% Tissue culture supernatant
Purity	Protein A purified

Purification notes	This antibody is not purified. It is provided in cell supernatant and storage buffer.
Clonality	Monoclonal
Clone number	EPR3449
Isotype	IgG

Applications

The Abpromise guarantee Our **Abpromise guarantee** covers the use of ab92346 in the following tested applications.

The application notes include recommended starting dilutions; optimal dilutions/concentrations should be determined by the end user.

Application	Abreviews	Notes
Flow Cyt (Intra)		1/50. ab172730 - Rabbit monoclonal IgG, is suitable for use as an isotype control with this antibody.
WB	★★★★★ (2)	1/1000 - 1/2000. Predicted molecular weight: 211 kDa.

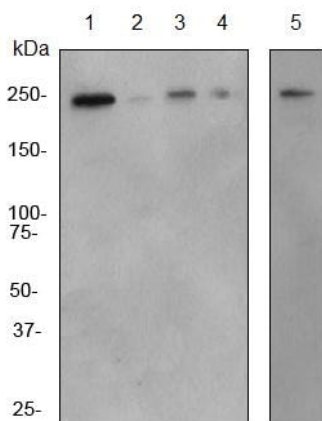
Application notes Is unsuitable for IHC-P or IP.

Target

Relevance Function: Coreceptor for SEMA3A, SEMA3C, SEMA3F and SEMA6D. Necessary for signaling by class 3 semaphorins and subsequent remodeling of the cytoskeleton. Plays a role in axon guidance, invasive growth and cell migration. Class 3 semaphorins bind to a complex composed of a neuropilin and a plexin. The plexin modulates the affinity of the complex for specific semaphorins, and its cytoplasmic domain is required for the activation of down-stream signaling events in the cytoplasm. Tissue specificity: Detected in fetal brain, lung, liver and kidney. Similarity: Belongs to the plexin family. Contains 4 IPT/TIG domains. Contains 1 Sema domain.

Cellular localization Cell Membrane

Images



Western blot - Anti-Plexin A1 antibody [EPR3449]
(ab92346)

All lanes : Anti-Plexin A1 antibody [EPR3449] (ab92346) at
1/1000 dilution

Lane 1 : K562 cell lysate

Lane 2 : 293T cell lysate

Lane 3 : HUVEC cell lysate

Lane 4 : HepG2 cell lysate

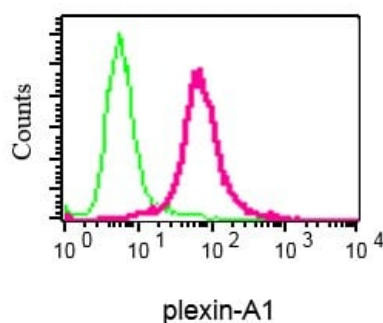
Lane 5 : Fetal brain tissue lysate

Lysates/proteins at 10 µg per lane.

Secondary

All lanes : HRP labelled goat anti-rabbit antibody at 1/2000 dilution

Predicted band size: 211 kDa



Flow Cytometry (Intracellular) - Anti-Plexin A1
antibody [EPR3449] (ab92346)

Intracellular Flow Cytometry analysis of permeabilized K562 cells
labeling Plexin A1 with ab92346 at 1/50 (red) compared to a rabbit
IgG (negative control) (green).

Why choose a recombinant antibody?



**Research with
confidence**
Consistent and
reproducible results



**Long-term and
scalable supply**
Recombinant
technology



**Success from the
first experiment**
Confirmed
specificity



**Ethical standards
compliant**
Animal-free
production

Anti-Plexin A1 antibody [EPR3449] (ab92346)

Our Abpromise to you: Quality guaranteed and expert technical support

- Replacement or refund for products not performing as stated on the datasheet
- Valid for 12 months from date of delivery
- Response to your inquiry within 24 hours

- We provide support in Chinese, English, French, German, Japanese and Spanish
- Extensive multi-media technical resources to help you
- We investigate all quality concerns to ensure our products perform to the highest standards

If the product does not perform as described on this datasheet, we will offer a refund or replacement. For full details of the Abpromise, please visit <https://www.abcam.com/abpromise> or contact our technical team.

Terms and conditions

- Guarantee only valid for products bought direct from Abcam or one of our authorized distributors