

Product datasheet

Anti-Plexin B2/MM1 antibody ab229950

[1 References](#) [3 Images](#)

Overview

Product name	Anti-Plexin B2/MM1 antibody
Description	Rabbit polyclonal to Plexin B2/MM1
Host species	Rabbit
Tested applications	Suitable for: WB, IHC-P
Species reactivity	Reacts with: Mouse, Human
Immunogen	Recombinant fragment corresponding to Human Plexin B2/MM1 aa 1050-1200. Database link: O15031 Run BLAST with Run BLAST with
Positive control	WB: Mouse liver lysate. IHC-P: Human colon cancer and kidney tissues.
General notes	<p>The Life Science industry has been in the grips of a reproducibility crisis for a number of years. Abcam is leading the way in addressing this with our range of recombinant monoclonal antibodies and knockout edited cell lines for gold-standard validation. Please check that this product meets your needs before purchasing.</p> <p>If you have any questions, special requirements or concerns, please send us an inquiry and/or contact our Support team ahead of purchase. Recommended alternatives for this product can be found below, along with publications, customer reviews and Q&As</p>

Properties

Form	Liquid
Storage instructions	Shipped at 4°C. Store at +4°C short term (1-2 weeks). Upon delivery aliquot. Store at -20°C long term. Avoid freeze / thaw cycle.
Storage buffer	pH: 7.30 Preservative: 0.02% Sodium azide Constituents: PBS, 50% Glycerol (glycerin, glycerine)
Purity	Immunogen affinity purified
Clonality	Polyclonal
Isotype	IgG

Applications

The Abpromise guarantee

Our **Abpromise guarantee** covers the use of ab229950 in the following tested applications.

The application notes include recommended starting dilutions; optimal dilutions/concentrations should be determined by the end user.

Application	Abreviews	Notes
WB		1/1000 - 1/5000. Detects a band of approximately 205 kDa (predicted molecular weight: 205 kDa).
IHC-P		1/20 - 1/200.

Target

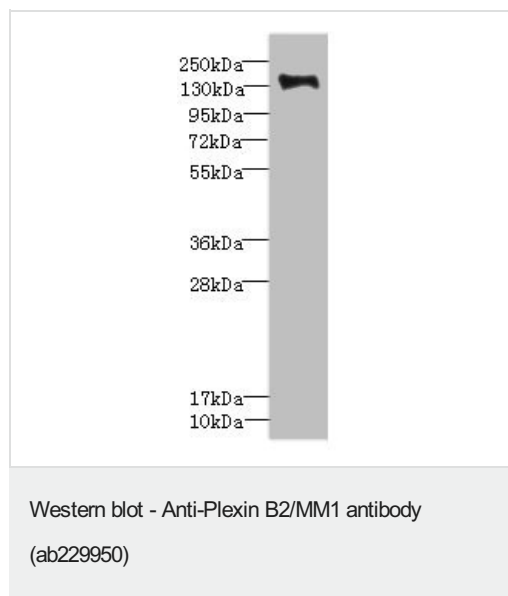
Relevance

Plexin B2/MM1 is a transmembrane receptor for the class 4 semaphorin, SEMA4D. This receptor has key roles in RHOA activation and subsequent changes of the actin cytoskeleton, axon guidance, invasive growth and cell migration.

Cellular localization

Membrane; single-pass type I membrane protein.

Images



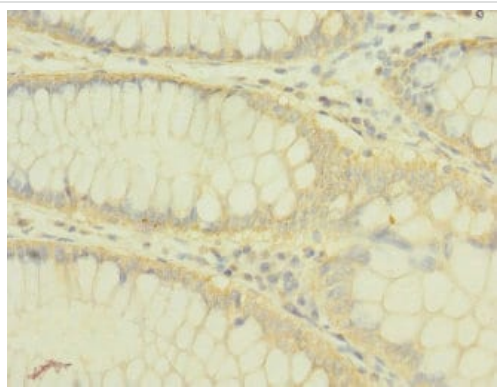
Anti-Plexin B2/MM1 antibody (ab229950) at 1/1000 dilution +
Mouse liver lysate

Secondary

Goat anti-rabbit IgG at 1/10000 dilution

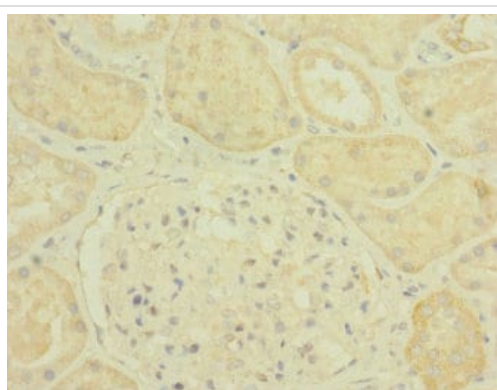
Predicted band size: 205 kDa

Observed band size: 205 kDa



Paraffin-embedded human colon cancer tissue stained for Plexin B2/MM1 using ab229950 at 1/100 dilution in immunohistochemical analysis.

Immunohistochemistry (Formalin/PFA-fixed paraffin-embedded sections) - Anti-Plexin B2/MM1 antibody (ab229950)



Paraffin-embedded human kidney tissue stained for Plexin B2/MM1 using ab229950 at 1/100 dilution in immunohistochemical analysis.

Immunohistochemistry (Formalin/PFA-fixed paraffin-embedded sections) - Anti-Plexin B2/MM1 antibody (ab229950)

Please note: All products are "FOR RESEARCH USE ONLY. NOT FOR USE IN DIAGNOSTIC PROCEDURES"

Our Abpromise to you: Quality guaranteed and expert technical support

- Replacement or refund for products not performing as stated on the datasheet
- Valid for 12 months from date of delivery
- Response to your inquiry within 24 hours

- We provide support in Chinese, English, French, German, Japanese and Spanish
- Extensive multi-media technical resources to help you
- We investigate all quality concerns to ensure our products perform to the highest standards

If the product does not perform as described on this datasheet, we will offer a refund or replacement. For full details of the Abpromise, please visit <https://www.abcam.com/abpromise> or contact our technical team.

Terms and conditions

- Guarantee only valid for products bought direct from Abcam or one of our authorized distributors