

Product datasheet

Anti-PLGF antibody ab11938

[2 References](#) [1 Image](#)

Overview

Product name	Anti-PLGF antibody
Description	Rabbit polyclonal to PLGF
Host species	Rabbit
Tested applications	Suitable for: WB
Species reactivity	Reacts with: Human
Immunogen	Recombinant fragment corresponding to Human PLGF aa 19-170. Database link: P49763-3
Positive control	WB: Recombinant human PLGF
General notes	<p>The Life Science industry has been in the grips of a reproducibility crisis for a number of years. Abcam is leading the way in addressing this with our range of recombinant monoclonal antibodies and knockout edited cell lines for gold-standard validation. Please check that this product meets your needs before purchasing.</p> <p>If you have any questions, special requirements or concerns, please send us an inquiry and/or contact our Support team ahead of purchase. Recommended alternatives for this product can be found below, along with publications, customer reviews and Q&As</p>

Properties

Form	Liquid
Storage instructions	Shipped at 4°C. Store at +4°C short term (1-2 weeks). Upon delivery aliquot. Store at -20°C. Avoid freeze / thaw cycle.
Storage buffer	Constituent: PBS
Purity	Protein A purified
Clonality	Polyclonal
Isotype	IgG

Applications

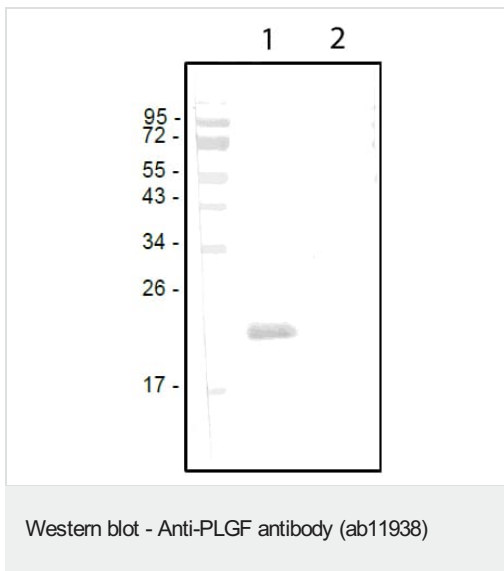
The Abpromise guarantee Our **Abpromise guarantee** covers the use of ab11938 in the following tested applications. The application notes include recommended starting dilutions; optimal dilutions/concentrations should be determined by the end user.

Application	Abreviews	Notes
WB		Use a concentration of 2 - 5 µg/ml. Predicted molecular weight: 25 kDa. Detects 25-50 ng/lane of recombinant human PIGF1 and PIGF2 under reducing and non-reducing conditions.

Target

Function	Growth factor active in angiogenesis and endothelial cell growth, stimulating their proliferation and migration. It binds to the receptor FLT1/VEGFR-1. Isoform PIGF-2 binds NRP1/neuropilin-1 and NRP2/neuropilin-2 in a heparin-dependent manner.
Tissue specificity	While the three isoforms are present in most placental tissues, PIGF-2 is specific to early (8 week) placenta and only PIGF-1 is found in the colon and mammary carcinomas.
Sequence similarities	Belongs to the PDGF/VEGF growth factor family.
Domain	Isoform PIGF-2 contains a basic insert which acts as a cell retention signal.
Post-translational modifications	N-glycosylated.
Cellular localization	Secreted. The three isoforms are secreted but PIGF-2 appears to remain cell attached unless released by heparin.

Images



All lanes : Anti-PLGF antibody (ab11938)

Lane 1 : Recombinant human PLGF

Lane 2 : Recombinant mouse PLGF

Predicted band size: 25 kDa

Western analysis of human PIGF-2 with a polyclonal antibody directed against human PIGF-2 derived from insect cells.

Please note: All products are "FOR RESEARCH USE ONLY. NOT FOR USE IN DIAGNOSTIC PROCEDURES"

Our Abpromise to you: Quality guaranteed and expert technical support

- Replacement or refund for products not performing as stated on the datasheet
- Valid for 12 months from date of delivery

- Response to your inquiry within 24 hours
- We provide support in Chinese, English, French, German, Japanese and Spanish
- Extensive multi-media technical resources to help you
- We investigate all quality concerns to ensure our products perform to the highest standards

If the product does not perform as described on this datasheet, we will offer a refund or replacement. For full details of the Abpromise, please visit <https://www.abcam.com/abpromise> or contact our technical team.

Terms and conditions

- Guarantee only valid for products bought direct from Abcam or one of our authorized distributors