

Anti-PLGF antibody - N-terminal ab9542

★ ★ ★ ★ ★ [1 Abreviews](#) [21 References](#) [2 Images](#)

Overview

| | |
|----------------------------|---|
| Product name | Anti-PLGF antibody - N-terminal |
| Description | Rabbit polyclonal to PLGF - N-terminal |
| Host species | Rabbit |
| Tested applications | Suitable for: WB, ICC/IF |
| Species reactivity | Reacts with: Human, Recombinant fragment |
| Immunogen | Synthetic peptide corresponding to Human PLGF (N terminal). Highly purified N-terminal 20 aa synthetic peptide (Human). Database link: P49763 |
| General notes | <p>According to Swissprot P49763; PLGF exists in three isoforms PLGF 1, 2 and 3. The N-terminal immunogen sequence of ab9542 is present in all isoforms so extra bands might be observed near the band of interest.</p> <p>The Life Science industry has been in the grips of a reproducibility crisis for a number of years. Abcam is leading the way in addressing this with our range of recombinant monoclonal antibodies and knockout edited cell lines for gold-standard validation. Please check that this product meets your needs before purchasing.</p> <p>If you have any questions, special requirements or concerns, please send us an inquiry and/or contact our Support team ahead of purchase. Recommended alternatives for this product can be found below, along with publications, customer reviews and Q&As</p> |

Properties

| | |
|-----------------------------|--|
| Form | Lyophilized:Reconstitute in sterile water to a concentration of 0.1-1.0 mg/ml. |
| Storage instructions | Shipped at 4°C. Store at +4°C short term (1-2 weeks). Upon delivery aliquot. Store at -20°C or -80°C. Avoid freeze / thaw cycle. |
| Storage buffer | Constituent: PBS |
| Purity | Protein A purified |
| Clonality | Polyclonal |
| Isotype | IgG |

Applications

The Abpromise guarantee

Our **Abpromise guarantee** covers the use of ab9542 in the following tested applications.

The application notes include recommended starting dilutions; optimal dilutions/concentrations should be determined by the end user.

| Application | Abreviews | Notes |
|-------------|-----------|--|
| WB | ★★★★★ (1) | Use a concentration of 1 - 4 µg/ml. It will detect 25 - 50 ng/lane of recombinant human PLGF-1 (17-18 kDa) and PLGF-2 (22-23 kDa) under reducing conditions. Dimers are detected at higher protein amounts/lane. |
| ICC/IF | | Use a concentration of 1 µg/ml. |

Target

Function

Growth factor active in angiogenesis and endothelial cell growth, stimulating their proliferation and migration. It binds to the receptor FLT1/VEGFR-1. Isoform PIGF-2 binds NRP1/neuropilin-1 and NRP2/neuropilin-2 in a heparin-dependent manner.

Tissue specificity

While the three isoforms are present in most placental tissues, PIGF-2 is specific to early (8 week) placenta and only PIGF-1 is found in the colon and mammary carcinomas.

Sequence similarities

Belongs to the PDGF/VEGF growth factor family.

Domain

Isoform PIGF-2 contains a basic insert which acts as a cell retention signal.

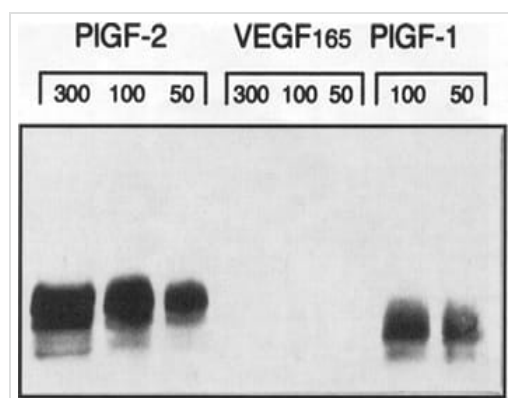
Post-translational modifications

N-glycosylated.

Cellular localization

Secreted. The three isoforms are secreted but PIGF-2 appears to remain cell attached unless released by heparin.

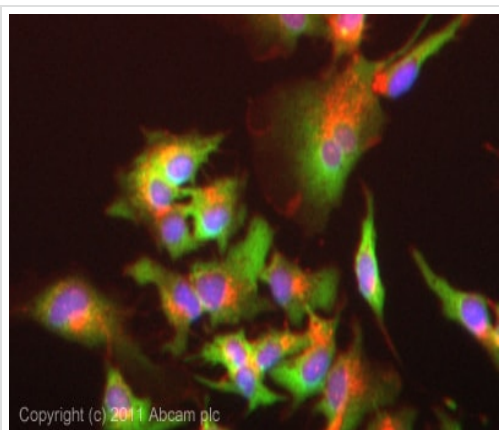
Images



Western blot - Anti-PLGF antibody - N-terminal (ab9542)

Western blot of chromatography purified, recombinant PLGF-1/-2 and VEGF165 immobilized to PVDF-membrane.

PIGF antibody shows no cross-reactivity to VEGF165.



Copyright (c) 2011 Abcam plc

Immunocytochemistry/ Immunofluorescence - Anti-PLGF antibody - N-terminal (ab9542)

ICC/IF image of ab9542 stained HepG2 (human liver hepatocellular carcinoma cell line) cells. The cells were fixed in 4% formaldehyde for 10 minutes and then incubated in 1%BSA / 10% normal goat serum / 0.3M glycine in 0.1% PBS-Tween for 1 hour to permeabilize the cells and block non-specific protein-protein interactions. The cells were then incubated with the antibody (ab9542, 1 µg/ml) overnight at +4°C. The secondary antibody (green) was Alexa Fluor® 488 goat anti-rabbit IgG (H+L) used at a 1/1000 dilution for 1 hour. Alexa Fluor® 594 WGA was used to label plasma membranes (red) at a 1/200 dilution for 1 hour. DAPI was used to stain the cell nuclei (blue) at a concentration of 1.43 µM.

Please note: All products are "FOR RESEARCH USE ONLY. NOT FOR USE IN DIAGNOSTIC PROCEDURES"

Our Abpromise to you: Quality guaranteed and expert technical support

- Replacement or refund for products not performing as stated on the datasheet
- Valid for 12 months from date of delivery
- Response to your inquiry within 24 hours
- We provide support in Chinese, English, French, German, Japanese and Spanish
- Extensive multi-media technical resources to help you
- We investigate all quality concerns to ensure our products perform to the highest standards

If the product does not perform as described on this datasheet, we will offer a refund or replacement. For full details of the Abpromise, please visit <https://www.abcam.com/abpromise> or contact our technical team.

Terms and conditions

- Guarantee only valid for products bought direct from Abcam or one of our authorized distributors