




## Product datasheet

### Anti-PLLP antibody ab236668

2 Images

#### Overview

<b>Product name</b>	Anti-PLLP antibody
<b>Description</b>	Rabbit polyclonal to PLLP
<b>Host species</b>	Rabbit
<b>Tested applications</b>	<b>Suitable for:</b> WB, ICC/IF
<b>Species reactivity</b>	<b>Reacts with:</b> Mouse, Human <b>Predicted to work with:</b> Rat 
<b>Immunogen</b>	Recombinant fragment corresponding to Human PLLP aa 1-100. Database link: <a href="#">Q9Y342</a>  <a href="#">Run BLAST with</a>  <a href="#">Run BLAST with</a>
<b>Positive control</b>	WB: Mouse gonadal, kidney and lung tissue lysate. ICC/IF: HepG2 cells.
<b>General notes</b>	<p>The Life Science industry has been in the grips of a reproducibility crisis for a number of years. Abcam is leading the way in addressing this with our range of recombinant monoclonal antibodies and knockout edited cell lines for gold-standard validation. Please check that this product meets your needs before purchasing.</p> <p>If you have any questions, special requirements or concerns, please send us an inquiry and/or contact our Support team ahead of purchase. Recommended alternatives for this product can be found below, along with publications, customer reviews and Q&amp;As</p>

#### Properties

<b>Form</b>	Liquid
<b>Storage instructions</b>	Shipped at 4°C. Store at +4°C short term (1-2 weeks). Upon delivery aliquot. Store at -20°C long term. Avoid freeze / thaw cycle.
<b>Storage buffer</b>	pH: 7.40 Preservative: 0.03% Proclin 300 Constituents: PBS, 50% Glycerol (glycerin, glycerine)
<b>Purity</b>	Protein G purified
<b>Purification notes</b>	Purity >95%.
<b>Clonality</b>	Polyclonal
<b>Isotype</b>	IgG

## Applications

### The Abpromise guarantee

Our **Abpromise guarantee** covers the use of ab236668 in the following tested applications.

The application notes include recommended starting dilutions; optimal dilutions/concentrations should be determined by the end user.

Application	Abreviews	Notes
WB		1/1000 - 1/5000.
ICC/IF		1/50 - 1/200.

## Target

### Function

Appears to be involved in myelination. Could also participate in ion transport events as addition of plasmolipin to lipid bilayers induces the formation of ion channels, which are voltage-dependent and K(+)-selective.

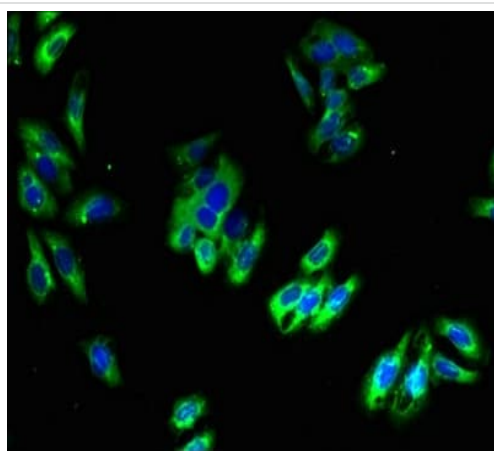
### Sequence similarities

Belongs to the MAL family.  
Contains 1 MARVEL domain.

### Cellular localization

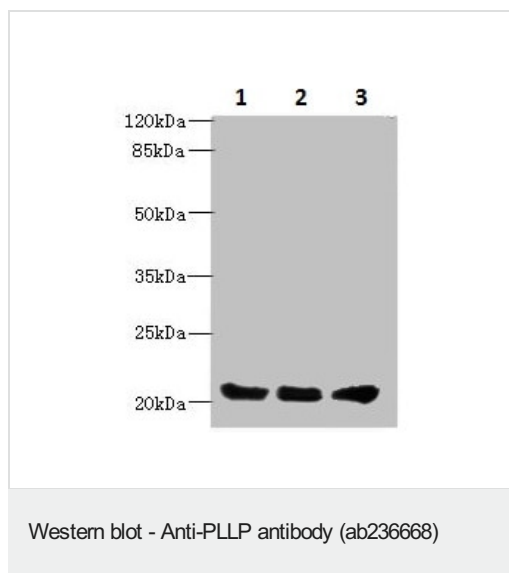
Membrane.

## Images



HepG2 (human liver hepatocellular carcinoma cell line) cells labeling PLLP (green) using ab236668 at 1/100 dilution in ICC/IF. Alexa Fluor 488-conjugated Goat Anti-Rabbit IgG (H+L) was used as the secondary antibody.

Immunocytochemistry/ Immunofluorescence - Anti-PLLP antibody (ab236668)



**All lanes :** Anti-PLLp antibody (ab236668) at 1/1000 dilution

**Lane 1 :** Mouse gonadal lysate

**Lane 2 :** Mouse kidney lysate

**Lane 3 :** Mouse lung lysate

**Secondary**

**All lanes :** Goat polyclonal to rabbit IgG at 1/10000 dilution

**Please note:** All products are "FOR RESEARCH USE ONLY. NOT FOR USE IN DIAGNOSTIC PROCEDURES"

### Our Abpromise to you: Quality guaranteed and expert technical support

---

- Replacement or refund for products not performing as stated on the datasheet
- Valid for 12 months from date of delivery
- Response to your inquiry within 24 hours
- We provide support in Chinese, English, French, German, Japanese and Spanish
- Extensive multi-media technical resources to help you
- We investigate all quality concerns to ensure our products perform to the highest standards

If the product does not perform as described on this datasheet, we will offer a refund or replacement. For full details of the Abpromise, please visit <https://www.abcam.com/abpromise> or contact our technical team.

### Terms and conditions

---

- Guarantee only valid for products bought direct from Abcam or one of our authorized distributors