


Product datasheet

Anti-Plzf antibody ab39354

★☆☆☆☆ [3 Abreviews](#) [16 References](#) [2 Images](#)

Overview

Product name	Anti-Plzf antibody
Description	Rabbit polyclonal to Plzf
Host species	Rabbit
Tested applications	Suitable for: WB
Species reactivity	Reacts with: Human, Zebrafish Predicted to work with: Mouse, Rat, Cow 
Immunogen	Synthetic peptide corresponding to Human Plzf aa 650 to the C-terminus conjugated to keyhole limpet haemocyanin. (Peptide available as ab39353)
Positive control	This antibody gave a positive signal in HL60 and Ramos whole cell lysates.
General notes	<p>The Life Science industry has been in the grips of a reproducibility crisis for a number of years. Abcam is leading the way in addressing this with our range of recombinant monoclonal antibodies and knockout edited cell lines for gold-standard validation. Please check that this product meets your needs before purchasing.</p> <p>If you have any questions, special requirements or concerns, please send us an inquiry and/or contact our Support team ahead of purchase. Recommended alternatives for this product can be found below, along with publications, customer reviews and Q&As</p>

Properties

Form	Liquid
Storage instructions	Shipped at 4°C. Store at +4°C short term (1-2 weeks). Upon delivery aliquot. Store at -20°C or -80°C. Avoid freeze / thaw cycle.
Storage buffer	pH: 7.40 Preservative: 0.02% Sodium azide Constituent: PBS Batches of this product that have a concentration < 1mg/ml may have BSA added as a stabilising agent. If you would like information about the formulation of a specific lot, please contact our scientific support team who will be happy to help.
Purity	Immunogen affinity purified

Clonality	Polyclonal
Isotype	IgG

Applications

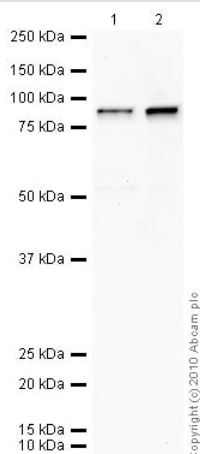
The Abpromise guarantee Our **Abpromise guarantee** covers the use of ab39354 in the following tested applications. The application notes include recommended starting dilutions; optimal dilutions/concentrations should be determined by the end user.

Application	Abreviews	Notes
WB		Use a concentration of 1 µg/ml. Detects a band of approximately 85 kDa (predicted molecular weight: 75 kDa). Can be blocked with Human Plzf peptide (ab39353) .

Target

Function	Probable transcription factor. May play a role in myeloid maturation and in the development and/or maintenance of other differentiated tissues. Probable substrate-recognition component of an E3 ubiquitin-protein ligase complex which mediates the ubiquitination and subsequent proteasomal degradation of target proteins.
Tissue specificity	Within the hematopoietic system, PLZF is expressed in bone marrow, early myeloid cell lines and peripheral blood mononuclear cells. Also expressed in the ovary, and at lower levels, in the kidney and lung.
Pathway	Protein modification; protein ubiquitination.
Involvement in disease	Skeletal defects, genital hypoplasia, and mental retardation A chromosomal aberration involving ZBTB16 may be a cause of acute promyelocytic leukemia (APL). Translocation t(11;17)(q32;q21) with RARA.
Sequence similarities	Belongs to the krueppel C2H2-type zinc-finger protein family. Contains 1 BTB (POZ) domain. Contains 9 C2H2-type zinc fingers.
Cellular localization	Nucleus.

Images



Western blot - Anti-Plzf antibody (ab39354)

All lanes : Anti-Plzf antibody (ab39354) at 1 µg/ml

Lane 1 : HL60 (Human promyelocytic leukemia cell line) Whole Cell Lysate

Lane 2 : Ramos (Human Burkitt's lymphoma cell line) Whole Cell Lysate

Lysates/proteins at 10 µg per lane.

Secondary

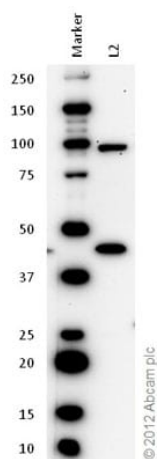
All lanes : Goat polyclonal to Rabbit IgG - H&L - Pre-Adsorbed (HRP) at 1/3000 dilution

Performed under reducing conditions.

Predicted band size: 75 kDa

Observed band size: 85 kDa

Exposure time: 15 minutes



Western blot - Anti-Plzf antibody (ab39354)

All lanes : Anti-Plzf antibody (ab39354) at 1.25 µg/ml

Lane 1 : Marker

Lane 2 : Zebrafish brain homogenate at 20 µg

Secondary

All lanes : Goat Anti-Rabbit IgG H&L (HRP) preadsorbed ([ab97080](#)) at 1/10000 dilution

Developed using the ECL technique.

Performed under reducing conditions.

Predicted band size: 75 kDa

Observed band size: 87 kDa

Exposure time: 5 minutes

Please note: All products are "FOR RESEARCH USE ONLY. NOT FOR USE IN DIAGNOSTIC PROCEDURES"

Our Abpromise to you: Quality guaranteed and expert technical support

- Replacement or refund for products not performing as stated on the datasheet
- Valid for 12 months from date of delivery
- Response to your inquiry within 24 hours
- We provide support in Chinese, English, French, German, Japanese and Spanish
- Extensive multi-media technical resources to help you
- We investigate all quality concerns to ensure our products perform to the highest standards

If the product does not perform as described on this datasheet, we will offer a refund or replacement. For full details of the Abpromise, please visit <https://www.abcam.com/abpromise> or contact our technical team.

Terms and conditions

- Guarantee only valid for products bought direct from Abcam or one of our authorized distributors