


## Product datasheet

# Anti-PME-1 antibody ab154569

[1 References](#) [3 Images](#)

### Overview

Product name	Anti-PME-1 antibody
Description	Rabbit polyclonal to PME-1
Host species	Rabbit
Tested applications	<b>Suitable for:</b> WB, IHC-P
Species reactivity	<b>Reacts with:</b> Mouse, Human <b>Predicted to work with:</b> Cow 
Immunogen	Recombinant fragment corresponding to Human PME-1 aa 18-297.
Positive control	293T, A431, HeLa, HepG2, NIH 3T3, JC and BCL1 whole cell lysates; Human Hepatoma tissue.
General notes	<p>The Life Science industry has been in the grips of a reproducibility crisis for a number of years. Abcam is leading the way in addressing this with our range of recombinant monoclonal antibodies and knockout edited cell lines for gold-standard validation. Please check that this product meets your needs before purchasing.</p> <p>If you have any questions, special requirements or concerns, please send us an inquiry and/or contact our Support team ahead of purchase. Recommended alternatives for this product can be found below, along with publications, customer reviews and Q&amp;As</p>

### Properties

Form	Liquid
Storage instructions	Shipped at 4°C. Upon delivery aliquot. Store at -20°C or -80°C. Avoid freeze / thaw cycle.
Storage buffer	pH: 7.00 Preservative: 0.01% Thimerosal (merthiolate) Constituents: 79.99% PBS, 20% Glycerol (glycerin, glycerine)
Purity	Immunogen affinity purified
Clonality	Polyclonal
Isotype	IgG

### Applications

The **Abpromise guarantee** Our **Abpromise guarantee** covers the use of ab154569 in the following tested applications.

The application notes include recommended starting dilutions; optimal dilutions/concentrations should be determined by the end user.

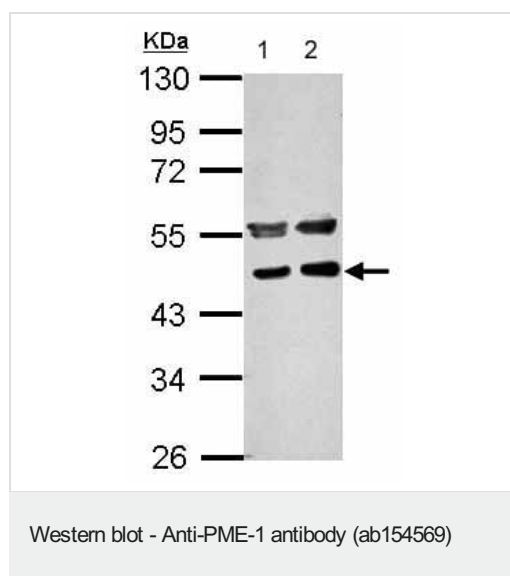
Application	Abreviews	Notes
WB		1/500 - 1/3000. Predicted molecular weight: 42 kDa.
IHC-P		1/100 - 1/1000.

## Target

**Function** Demethylates proteins that have been reversibly carboxymethylated. Demethylates PPP2CB (in vitro).

**Sequence similarities** Belongs to the AB hydrolase superfamily.

## Images



**All lanes** : Anti-PME-1 antibody (ab154569) at 1/1000 dilution

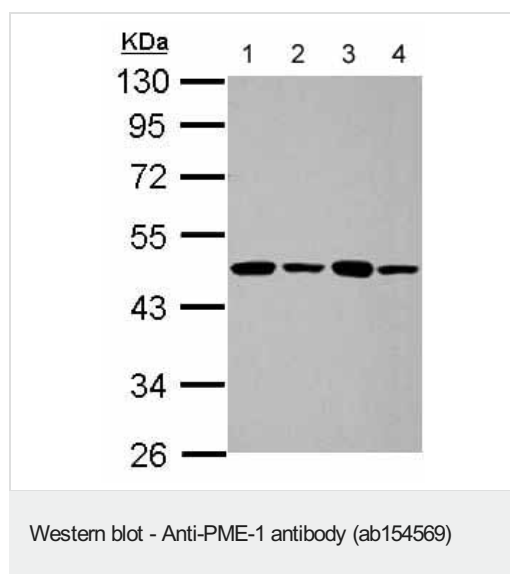
**Lane 1** : NIH 3T3 whole cell lysate

**Lane 2** : JC whole cell lysate

Lysates/proteins at 30 µg per lane.

**Predicted band size:** 42 kDa

10% SDS PAGE



**All lanes** : Anti-PME-1 antibody (ab154569) at 1/1000 dilution

**Lane 1** : 293T whole cell lysate

**Lane 2** : A431 whole cell lysate

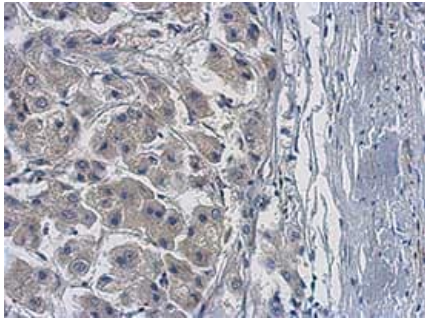
**Lane 3** : HeLa whole cell lysate

**Lane 4** : HepG2 whole cell lysate

Lysates/proteins at 30 µg per lane.

**Predicted band size:** 42 kDa

10% SDS PAGE



Immunohistochemical analysis of paraffin-embedded Human Hepatoma tissue labeling PME-1 with ab154569 at 1/500 dilution.

Immunohistochemistry (Formalin/PFA-fixed paraffin-embedded sections) - Anti-PME-1 antibody (ab154569)

**Please note:** All products are "FOR RESEARCH USE ONLY. NOT FOR USE IN DIAGNOSTIC PROCEDURES"

### Our Abpromise to you: Quality guaranteed and expert technical support

---

- Replacement or refund for products not performing as stated on the datasheet
- Valid for 12 months from date of delivery
- Response to your inquiry within 24 hours
- We provide support in Chinese, English, French, German, Japanese and Spanish
- Extensive multi-media technical resources to help you
- We investigate all quality concerns to ensure our products perform to the highest standards

If the product does not perform as described on this datasheet, we will offer a refund or replacement. For full details of the Abpromise, please visit <https://www.abcam.com/abpromise> or contact our technical team.

### Terms and conditions

---

- Guarantee only valid for products bought direct from Abcam or one of our authorized distributors