

Product datasheet

Anti-PMF-1 antibody [EPR17298] ab199531

Recombinant RabMAb

5 Images

Overview

Product name	Anti-PMF-1 antibody [EPR17298]
Description	Rabbit monoclonal [EPR17298] to PMF-1
Host species	Rabbit
Tested applications	Suitable for: IP, WB
Species reactivity	Reacts with: Mouse, Rat, Human
Immunogen	Recombinant full length protein. This information is proprietary to Abcam and/or its suppliers.
Positive control	HepG2 whole cell lysate Jurkat whole cell lysate HEK293 whole cell lysate, HeLa whole cell lysate, Human fetal brain tissue lysate, Human fetal kidney tissue lysate, C6 whole cell lysate, Raw264.7 whole cell lysate, NIH/3T3 whole cell lysate,
General notes	<p>This product is a recombinant monoclonal antibody, which offers several advantages including:</p> <ul style="list-style-type: none">- High batch-to-batch consistency and reproducibility- Improved sensitivity and specificity- Long-term security of supply- Animal-free production <p>For more information see here.</p> <p>Our RabMAb[®] technology is a patented hybridoma-based technology for making rabbit monoclonal antibodies. For details on our patents, please refer to RabMAb[®] patents.</p>

Properties

Form	Liquid
Storage instructions	Shipped at 4°C. Store at +4°C short term (1-2 weeks). Upon delivery aliquot. Store at -20°C long term. Avoid freeze / thaw cycle.
Storage buffer	pH: 7.2 Preservative: 0.01% Sodium azide Constituents: 59% PBS, 40% Glycerol (glycerin, glycerine), 0.05% BSA
Purity	Protein A purified
Clonality	Monoclonal
Clone number	EPR17298

Isotype

IgG

Applications

The Abpromise guarantee

Our **Abpromise guarantee** covers the use of ab199531 in the following tested applications.

The application notes include recommended starting dilutions; optimal dilutions/concentrations should be determined by the end user.

Application	Abreviews	Notes
IP		1/80.
WB		1/1000. Detects a band of approximately 26 kDa (predicted molecular weight: 23 kDa).

Target

Function

Part of the MIS12 complex which is required for normal chromosome alignment and segregation and kinetochore formation during mitosis. May act as a cotranscription partner of NFE2L2 involved in regulation of polyamine-induced transcription of SSAT.

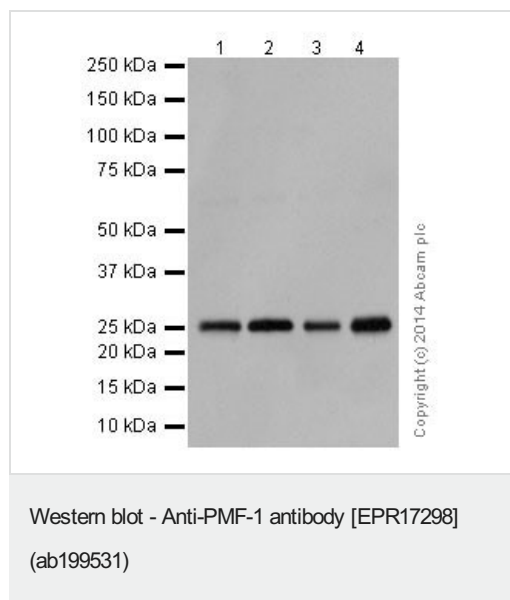
Tissue specificity

Highest levels of expression in heart and skeletal muscle, with significant levels expressed in kidney and liver.

Cellular localization

Nucleus. Chromosome > centromere > kinetochore. Associated with the kinetochore.

Images



All lanes : Anti-PMF-1 antibody [EPR17298] (ab199531) at 1/1000 dilution

Lane 1 : HepG2 (Human liver hepatocellular carcinoma) whole cell lysate

Lane 2 : Jurkat (Human T cell leukemia cells from peripheral blood) whole cell lysate

Lane 3 : HEK-293 (Human epithelial cells from embryonic kidney) whole cell lysate

Lane 4 : HeLa (Human epithelial cells from cervix adenocarcinoma) whole cell lysate

Lysates/proteins at 20 µg per lane.

Secondary

All lanes : Goat Anti-Rabbit IgG, (H+L), Peroxidase conjugated at 1/1000 dilution

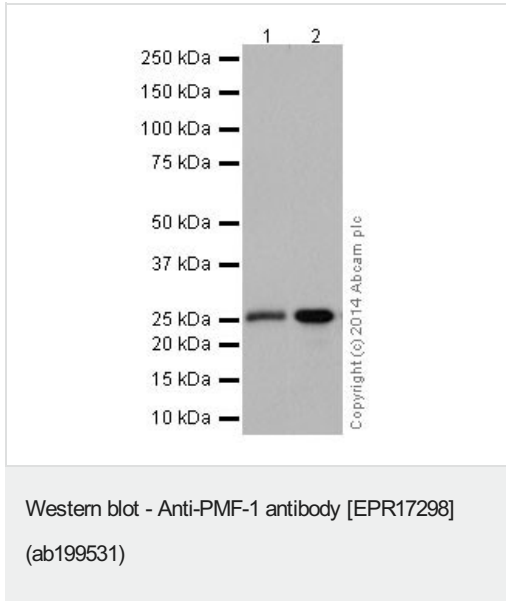
Developed using the ECL technique.

Predicted band size: 23 kDa

Observed band size: 26 kDa

Exposure time: 30 seconds

Blocking and diluting buffer was 5% NFDM /TBST.



All lanes : Anti-PMF-1 antibody [EPR17298] (ab199531) at 1/5000 dilution

Lane 1 : Human fetal brain tissue lysate

Lane 2 : Human fetal kidney tissue lysate

Lysates/proteins at 10 µg per lane.

Secondary

All lanes : Anti-Rabbit IgG (HRP), specific to the non-reduced form of IgG at 1/1000 dilution

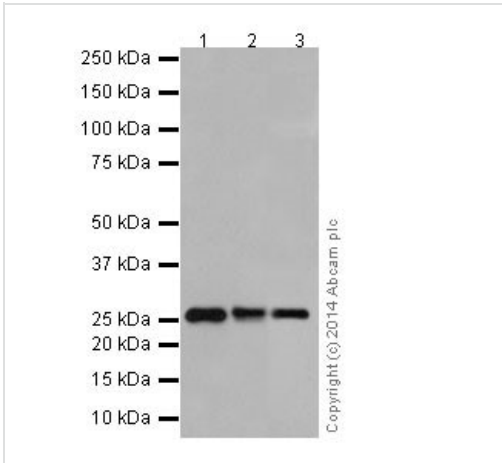
Developed using the ECL technique.

Predicted band size: 23 kDa

Observed band size: 26 kDa

Exposure time: 3 minutes

Blocking and diluting buffer was 5% NFDM /TBST.



Western blot - Anti-PMF-1 antibody [EPR17298] (ab199531)

All lanes : Anti-PMF-1 antibody [EPR17298] (ab199531) at 1/1000 dilution

Lane 1 : C6 (Rat glial tumor cells) whole cell lysate

Lane 2 : Raw264.7 (Mouse macrophage cells transformed with Abelson murine leukemia virus) whole cell lysate

Lane 3 : NIH/3T3 (Mouse embryo fibroblast cells) whole cell lysate

Lysates/proteins at 10 µg per lane.

Secondary

All lanes : Goat Anti-Rabbit IgG, (H+L), Peroxidase conjugated at 1/1000 dilution

Developed using the ECL technique.

Predicted band size: 23 kDa

Observed band size: 26 kDa

Exposure time: 30 seconds

Blocking and diluting buffer was 5% NFDm /TBST.

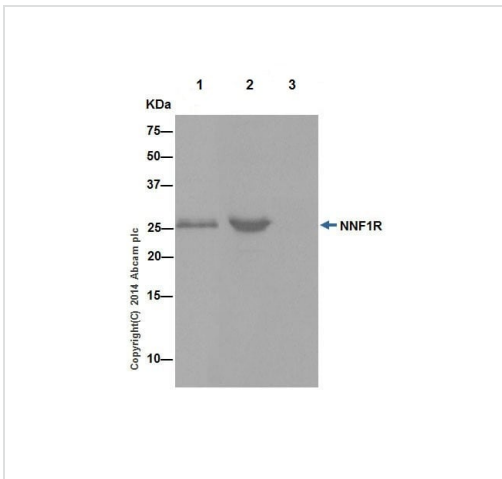
PMF-1 was immunoprecipitated from 1mg of HeLa (Human epithelial cells from cervix adenocarcinoma) whole cell extract with **ab179466** at 1/80 (or 5 µg). Western blot was performed using ab199531 at 1/1000. Anti-Rabbit IgG (HRP), specific to the non-reduced form of IgG, was used as secondary antibody at 1/1500 dilution.

Lane 1: HeLa whole cell extract at 10ug (input)

Lane 2: HeLa whole cell extract PMF-1 immunoprecipitate





Lane 3: Rabbit monoclonal IgG (**ab172730**) instead of ab199531 in HeLa whole cell extract immunoprecipitation.

Blocking and dilution buffer and concentration: 5% NFDm/TBST.



Immunoprecipitation - Anti-PMF-1 antibody [EPR17298] (ab199531)

Why choose a recombinant antibody?

 <p>Research with confidence Consistent and reproducible results</p>	 <p>Long-term and scalable supply Recombinant technology</p>
 <p>Success from the first experiment Confirmed specificity</p>	 <p>Ethical standards compliant Animal-free production</p>

Anti-PMF-1 antibody [EPR17298] (ab199531)

Please note: All products are "FOR RESEARCH USE ONLY. NOT FOR USE IN DIAGNOSTIC PROCEDURES"

Our Abpromise to you: Quality guaranteed and expert technical support

- Replacement or refund for products not performing as stated on the datasheet
- Valid for 12 months from date of delivery
- Response to your inquiry within 24 hours
- We provide support in Chinese, English, French, German, Japanese and Spanish
- Extensive multi-media technical resources to help you
- We investigate all quality concerns to ensure our products perform to the highest standards

If the product does not perform as described on this datasheet, we will offer a refund or replacement. For full details of the Abpromise, please visit <https://www.abcam.com/abpromise> or contact our technical team.

Terms and conditions

- Guarantee only valid for products bought direct from Abcam or one of our authorized distributors