




Product datasheet

Anti-PMPCA/INPP5E antibody ab140171

★★★★★ [1 Abreviews](#) [3 Images](#)

Overview

Product name	Anti-PMPCA/INPP5E antibody
Description	Rabbit polyclonal to PMPCA/INPP5E
Host species	Rabbit
Tested applications	Suitable for: WB, IHC-P
Species reactivity	Reacts with: Human Predicted to work with: Mouse, Rat, Dog 
Immunogen	Recombinant fragment corresponding to Human PMPCA/INPP5E aa 186-370. Sequence: MAVQFELEDLNLRPDPEPLLTEMIHEAAYRENTVGLHRFC PTENVAKINR EVLHSYLRNYYTPDRMVLGVGVEHEHLVDCARKYLLGV QPAWGSAAEAVD IDRSVAQYTGGIAKLERDMSNVSLGPTPIPELTHIMVGLES CSFLEEDFI PFAVLNMMMGGGGSFSAGGPGKGMFSRLYNVLNR <div>  Run BLAST with  Run BLAST with </div>
Positive control	MCF7 and A549 cell lysates; Human fetal colon tissue.
General notes	<p>The Life Science industry has been in the grips of a reproducibility crisis for a number of years. Abcam is leading the way in addressing this with our range of recombinant monoclonal antibodies and knockout edited cell lines for gold-standard validation. Please check that this product meets your needs before purchasing.</p> <p>If you have any questions, special requirements or concerns, please send us an inquiry and/or contact our Support team ahead of purchase. Recommended alternatives for this product can be found below, along with publications, customer reviews and Q&As</p>

Properties

Form	Lyophilized: Reconstitute with 200ul distilled sterile water. Please note that if you receive this product in liquid form it has already been reconstituted as described and no further reconstitution is necessary.
Storage instructions	Shipped at 4°C. Upon delivery aliquot and store at -20°C. Avoid repeated freeze / thaw cycles.

Storage buffer	pH: 7.20 Preservative: 0.02% Sodium azide Constituents: 1% BSA, 98% PBS
Purity	Immunogen affinity purified
Clonality	Polyclonal
Isotype	IgG

Applications

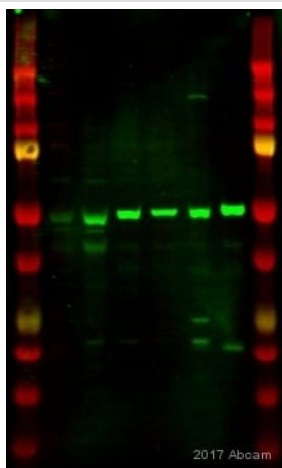
The Abpromise guarantee Our **Abpromise guarantee** covers the use of ab140171 in the following tested applications. The application notes include recommended starting dilutions; optimal dilutions/concentrations should be determined by the end user.

Application	Abreviews	Notes
WB	★★★★★ (1)	1/1000 - 1/2000. Predicted molecular weight: 58 kDa.
IHC-P		1/100 - 1/500.

Target

Function	Cleaves presequences (transit peptides) from mitochondrial protein precursors.
Sequence similarities	Belongs to the peptidase M16 family.
Cellular localization	Mitochondrion matrix.

Images



Western blot - Anti-PMPCA/INPP5E antibody (ab140171)

This image is courtesy of an Abreview submitted by Svitlana Yablonska.

All lanes : Anti-PMPCA/INPP5E antibody (ab140171) at 1/1000 dilution

Lane 1 : Mouse whole brain homogenate

Lane 2 : Mice brain non-synaptosomal mitochondria

Lane 3 : Mitochondria from ST-Hdh-Q7/Q7 striatal cells

Lane 4 : Mitochondria from ST-Hdh-Q111/Q111 striatal cells

Lane 5 : HEK293 whole cell homogenate

Lane 6 : Mitochondria from HEK293 cells

Lysates/proteins at 20 µg per lane.

Secondary

All lanes : IRDye 800CY-conjugated monoclonal goat anti-rabbit IgG at 1/15000 dilution

Performed under reducing conditions.

Predicted band size: 58 kDa

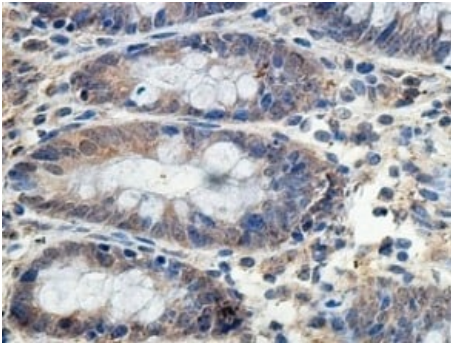
Observed band size: 50 kDa

Additional bands at: 40 kDa (possible non-specific binding)

Exposure time: 5 minutes

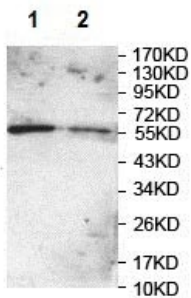
Protein standard (bands from the top to the bottom: 250, 150, 100, 75 (yellow), 50, 37, 25 (yellow), 20, 15 kDa.

Blocked for 1 hour at 25°C. Incubated with the primary antibody for 16 hours at 4°C.



Immunohistochemistry (Formalin/PFA-fixed paraffin-embedded sections) - Anti-PMPCA/INPP5E antibody (ab140171)

Immunohistochemical analysis of formalin-fixed, paraffin-embedded Human fetal colon tissue labelling PMPCA/INPP5E with ab140171 at 1/100 dilution.



Western blot - Anti-PMPCA/INPP5E antibody (ab140171)

All lanes : Anti-PMPCA/INPP5E antibody (ab140171) at 1/1000 dilution

Lane 1 : MCF7 cell lysate

Lane 2 : A549 cell lysate

Predicted band size: 58 kDa

Please note: All products are "FOR RESEARCH USE ONLY. NOT FOR USE IN DIAGNOSTIC PROCEDURES"

Our Abpromise to you: Quality guaranteed and expert technical support

- Replacement or refund for products not performing as stated on the datasheet

- Valid for 12 months from date of delivery
- Response to your inquiry within 24 hours
- We provide support in Chinese, English, French, German, Japanese and Spanish
- Extensive multi-media technical resources to help you
- We investigate all quality concerns to ensure our products perform to the highest standards

If the product does not perform as described on this datasheet, we will offer a refund or replacement. For full details of the Abpromise, please visit <https://www.abcam.com/abpromise> or contact our technical team.

Terms and conditions

- Guarantee only valid for products bought direct from Abcam or one of our authorized distributors