


Product datasheet

Anti-Podoplanin antibody [EPR7073] ab131216

Recombinant RabMAb

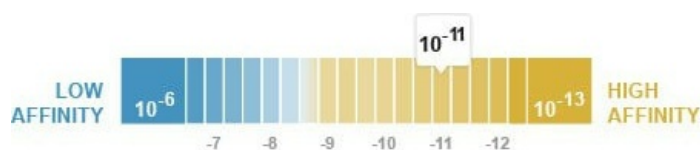
[2 References](#) [3 Images](#)

Overview

Product name	Anti-Podoplanin antibody [EPR7073]
Description	Rabbit monoclonal [EPR7073] to Podoplanin
Host species	Rabbit
Tested applications	Suitable for: WB Unsuitable for: Flow Cyt, ICC/IF, IHC-P or IP
Species reactivity	Reacts with: Human Predicted to work with: Mouse, Rat 
Immunogen	Synthetic peptide. This information is proprietary to Abcam and/or its suppliers.
Positive control	Human tonsil, uterus cancer, placenta tissue, HT 1080 and fetal lung lysates.
General notes	This product is a recombinant monoclonal antibody, which offers several advantages including: <ul style="list-style-type: none"> - High batch-to-batch consistency and reproducibility - Improved sensitivity and specificity - Long-term security of supply - Animal-free production For more information see here . Our RabMAb [®] technology is a patented hybridoma-based technology for making rabbit monoclonal antibodies. For details on our patents, please refer to RabMAb[®] patents .

Properties

Form	Liquid
Storage instructions	Shipped at 4°C. Store at -20°C. Stable for 12 months at -20°C.
Dissociation constant (K _D)	K _D = 3.30 x 10 ⁻¹¹ M



[Learn more about K_D](#)

Storage buffer	pH: 7.20
----------------	----------

	Preservative: 0.01% Sodium azide
	Constituents: 9% PBS, 40% Glycerol (glycerin, glycerine), 0.05% BSA, 50% Tissue culture supernatant
Purity	Protein A purified
Clonality	Monoclonal
Clone number	EPR7073
Isotype	IgG

Applications

The Abpromise guarantee Our **Abpromise guarantee** covers the use of ab131216 in the following tested applications. The application notes include recommended starting dilutions; optimal dilutions/concentrations should be determined by the end user.

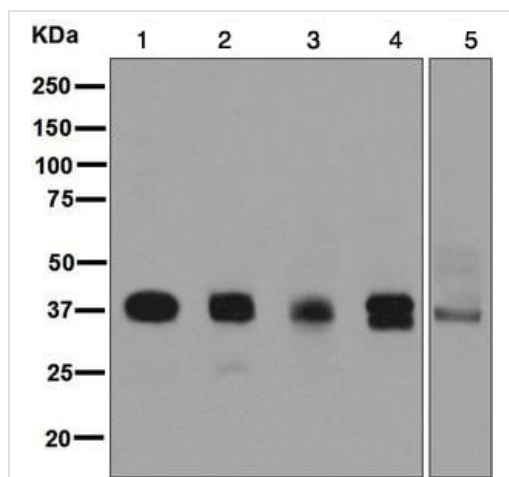
Application	Abreviews	Notes
WB		1/1000 - 1/10000. Detects a band of approximately 36-45 kDa (predicted molecular weight: 16 kDa).

Application notes Is unsuitable for Flow Cyt, ICC/IF, IHC-P or IP.

Target

Function	May be involved in cell migration and/or actin cytoskeleton organization. When expressed in keratinocytes, induces changes in cell morphology with transfected cells showing an elongated shape, numerous membrane protrusions, major reorganization of the actin cytoskeleton, increased motility and decreased cell adhesion. Required for normal lung cell proliferation and alveolus formation at birth. Induces platelet aggregation. Does not have any effect on folic acid or amino acid transport. Does not function as a water channel or as a regulator of aquaporin-type water channels.
Tissue specificity	Highly expressed in placenta, lung, skeletal muscle and brain. Weakly expressed in brain, kidney and liver. In placenta, expressed on the apical plasma membrane of endothelium. In lung, expressed in alveolar epithelium. Up-regulated in colorectal tumors and expressed in 25% of early oral squamous cell carcinomas.
Sequence similarities	Belongs to the podoplanin family.
Post-translational modifications	Extensively O-glycosylated. Contains sialic acid residues. O-glycosylation is necessary for platelet aggregation activity. The N-terminus is blocked.
Cellular localization	Membrane. Cell projection > filopodium membrane. Cell projection > lamellipodium membrane. Cell projection > microvillus membrane. Cell projection > ruffle membrane. Localized to actin-rich microvilli and plasma membrane projections such as filopodia, lamellipodia and ruffles.

Images



Western blot - Rabbit monoclonal [EPR7073] to Podoplanin (ab131216)

All lanes : Anti-Podoplanin antibody [EPR7073] (ab131216) at 1/1000 dilution

Lane 1 : Human fetal lung lysate

Lane 2 : Human tonsil lysate

Lane 3 : Human uterus cancer lysate

Lane 4 : Human placenta lysate

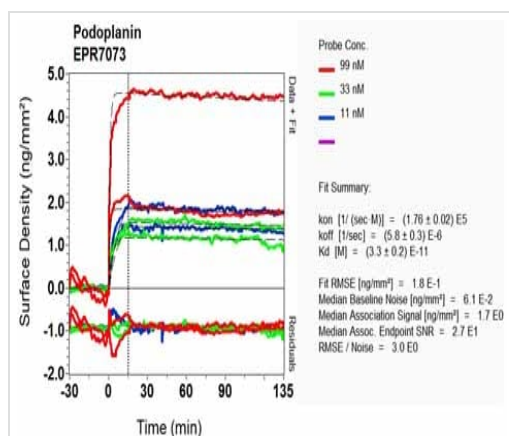
Lane 5 : HT 1080 cell lysate

Lysates/proteins at 10 µg per lane.

Secondary

All lanes : Goat anti-Rabbit HRP at 1/2000 dilution

Predicted band size: 16 kDa



OI-RD Scanning - Rabbit monoclonal [EPR7073] to Podoplanin (ab131216)

Equilibrium disassociation constant (K_D)

Learn more about K_D

[Click here to learn more about \$K_D\$](#)

Why choose a recombinant antibody?



Research with confidence
Consistent and reproducible results



Long-term and scalable supply
Recombinant technology



Success from the first experiment
Confirmed specificity



Ethical standards compliant
Animal-free production

Rabbit monoclonal [EPR7073] to Podoplanin
(ab131216)

Please note: All products are "FOR RESEARCH USE ONLY. NOT FOR USE IN DIAGNOSTIC PROCEDURES"

Our Abpromise to you: Quality guaranteed and expert technical support

- Replacement or refund for products not performing as stated on the datasheet
- Valid for 12 months from date of delivery
- Response to your inquiry within 24 hours
- We provide support in Chinese, English, French, German, Japanese and Spanish
- Extensive multi-media technical resources to help you
- We investigate all quality concerns to ensure our products perform to the highest standards

If the product does not perform as described on this datasheet, we will offer a refund or replacement. For full details of the Abpromise, please visit <https://www.abcam.com/abpromise> or contact our technical team.

Terms and conditions

- Guarantee only valid for products bought direct from Abcam or one of our authorized distributors