

# Anti-PODXL antibody - N-terminal ab205350

[4 References](#) [1 Image](#)

## Overview

<b>Product name</b>	Anti-PODXL antibody - N-terminal
<b>Description</b>	Rabbit polyclonal to PODXL - N-terminal
<b>Host species</b>	Rabbit
<b>Tested applications</b>	<b>Suitable for:</b> WB
<b>Species reactivity</b>	<b>Reacts with:</b> Rat
<b>Immunogen</b>	Synthetic peptide within Human PODXL (N terminal). The exact sequence is proprietary. NP_001018121.1. Database link: <a href="#">O00592</a>
<b>General notes</b>	<p>The Life Science industry has been in the grips of a reproducibility crisis for a number of years. Abcam is leading the way in addressing this with our range of recombinant monoclonal antibodies and knockout edited cell lines for gold-standard validation. Please check that this product meets your needs before purchasing.</p> <p>If you have any questions, special requirements or concerns, please send us an inquiry and/or contact our Support team ahead of purchase. Recommended alternatives for this product can be found below, along with publications, customer reviews and Q&amp;As</p>

## Properties

<b>Form</b>	Liquid
<b>Storage instructions</b>	Shipped at 4°C. Store at +4°C short term (1-2 weeks). Upon delivery aliquot. Store at -20°C long term. Avoid freeze / thaw cycle.
<b>Storage buffer</b>	Preservative: 0.02% Sodium azide Constituent: 30% Glycerol  Proprietary buffer: Tris/Glycine/HCL buffer pH7.4-7.8 with stabilizing proteins (0.5%).
<b>Purity</b>	Immunogen affinity purified
<b>Clonality</b>	Polyclonal
<b>Isotype</b>	IgG

## Applications

**The Abpromise guarantee**

Our **Abpromise guarantee** covers the use of ab205350 in the following tested applications.

The application notes include recommended starting dilutions; optimal dilutions/concentrations should be determined by the end user.

Application	Abreviews	Notes
WB		1/500. Predicted molecular weight: 59 kDa.

**Target****Function**

Involved in the regulation of both adhesion and cell morphology and cancer progression. Function as an anti-adhesive molecule that maintains an open filtration pathway between neighboring foot processes in the podocyte by charge repulsion. Acts as a pro-adhesive molecule, enhancing the adherence of cells to immobilized ligands, increasing the rate of migration and cell-cell contacts in an integrin-dependent manner. Induces the formation of apical actin-dependent microvilli. Involved in the formation of a preapical plasma membrane subdomain to set up initial epithelial polarization and the apical lumen formation during renal tubulogenesis. Plays a role in cancer development and aggressiveness by inducing cell migration and invasion through its interaction with the actin-binding protein EZR. Affects EZR-dependent signaling events, leading to increased activities of the MAPK and PI3K pathways in cancer cells.

**Tissue specificity**

Glomerular epithelium cell (podocyte).

**Sequence similarities**

Belongs to the podocalyxin family.

**Domain**

Both the O-glycan-rich domain of the extracellular domain and the C-terminus PDZ-binding motif (DTHL) in the cytoplasmic tail harbor an apical sorting signal. The cytoplasmic domain is necessary for the apical membrane targeting and renal tubulogenesis. The cytoplasmic C-terminus PDZ-binding motif (DTHL) is essential for interaction with SLC9A3R1 and for targeting SLC9A3R1 to the apical cell membrane. The extracellular domain is necessary for microvillus formation (By similarity). The large highly anionic extracellular domain allows to maintain open filtration pathways between neighboring podocyte foot processes.

**Post-translational modifications**

N- and O-linked glycosylated. Sialoglycoprotein.

**Cellular localization**

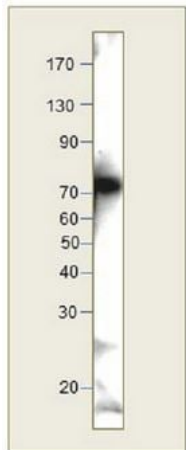
Apical cell membrane. Cell projection, lamellipodium. Cell projection, filopodium. Cell projection, ruffle. Cell projection, microvillus. Membrane raft. Membrane. In single attached epithelial cells is restricted to a preapical pole on the free plasma membrane whereas other apical and basolateral proteins are not yet polarized. Colocalizes with SLC9A3R2 at the apical plasma membrane during epithelial polarization. Colocalizes with SLC9A3R1 at the trans-Golgi network (transiently) and at the apical plasma membrane. Its association with the membrane raft is transient. Colocalizes with actin filaments, EZR and SLC9A3R1 in a punctate pattern at the apical cell surface where microvilli form. Colocalizes with EZR and SLC9A3R2 at the apical cell membrane of glomerular epithelium cells (By similarity). Forms granular, punctuated pattern, forming patches, preferentially adopting a polar distribution, located on the migrating poles of the cell or forming clusters along the terminal ends of filipodia establishing contact with the endothelial cells. Colocalizes with the submembrane actin of lamellipodia, particularly associated with ruffles. Colocalizes with vinculin at protrusions of cells. Colocalizes with ITGB1. Colocalizes with PARD3, PRKCI, EXOC5, OCLN, RAB11A and RAB8A in apical membrane initiation sites (AMIS) during the generation of apical surface and luminogenesis (By similarity).

**Form**

There are 2 isoforms produced by alternative splicing.

## Images

---



Western blot - Anti-PODXL antibody - N-terminal  
(ab205350)

Anti-PODXL antibody - N-terminal (ab205350) at 1/500 dilution +  
rat kidney lysate

Performed under reducing conditions.

**Predicted band size:** 59 kDa

**Observed band size:** 73 kDa

**Please note:** All products are "FOR RESEARCH USE ONLY. NOT FOR USE IN DIAGNOSTIC PROCEDURES"

## Our Abpromise to you: Quality guaranteed and expert technical support

---

- Replacement or refund for products not performing as stated on the datasheet
- Valid for 12 months from date of delivery
- Response to your inquiry within 24 hours
- We provide support in Chinese, English, French, German, Japanese and Spanish
- Extensive multi-media technical resources to help you
- We investigate all quality concerns to ensure our products perform to the highest standards

If the product does not perform as described on this datasheet, we will offer a refund or replacement. For full details of the Abpromise, please visit <https://www.abcam.com/abpromise> or contact our technical team.

## Terms and conditions

---

- Guarantee only valid for products bought direct from Abcam or one of our authorized distributors