


Product datasheet

Anti-Pofut1 antibody ab154051

[1 References](#) [4 Images](#)

Overview

Product name	Anti-Pofut1 antibody
Description	Rabbit polyclonal to Pofut1
Host species	Rabbit
Tested applications	Suitable for: WB, ICC/IF
Species reactivity	Reacts with: Mouse, Human Predicted to work with: Rat, Cow, Dog, Pig 
Immunogen	Recombinant fragment, corresponding to a region within amino acids 1-210 of Human Pofut1 (Uniprot ID: Q9H488).
Positive control	HCT116, Mouse liver and HUVEC whole cell lysates; HCT116 cells.
General notes	<p>The Life Science industry has been in the grips of a reproducibility crisis for a number of years. Abcam is leading the way in addressing this with our range of recombinant monoclonal antibodies and knockout edited cell lines for gold-standard validation. Please check that this product meets your needs before purchasing.</p> <p>If you have any questions, special requirements or concerns, please send us an inquiry and/or contact our Support team ahead of purchase. Recommended alternatives for this product can be found below, along with publications, customer reviews and Q&As</p>

Properties

Form	Liquid
Storage instructions	Shipped at 4°C. Upon delivery aliquot. Store at -20°C or -80°C. Avoid freeze / thaw cycle.
Storage buffer	pH: 7.00 Preservative: 0.01% Thimerosal (merthiolate) Constituents: 1.21% Tris, 0.75% Glycine, 20% Glycerol (glycerin, glycerine)
Purity	Immunogen affinity purified
Clonality	Polyclonal
Isotype	IgG

Applications

The Abpromise guarantee

Our **Abpromise guarantee** covers the use of ab154051 in the following tested applications.

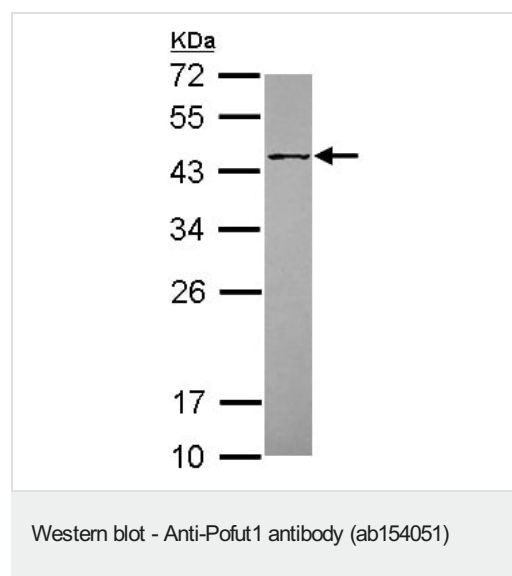
The application notes include recommended starting dilutions; optimal dilutions/concentrations should be determined by the end user.

Application	Abreviews	Notes
WB		1/1000 - 1/10000. Predicted molecular weight: 44 kDa.
ICC/IF		1/100 - 1/1000.

Target

Function	Catalyzes the reaction that attaches fucose through an O-glycosidic linkage to a conserved serine or threonine residue in EGF domains. Plays a crucial role in Notch signaling.
Tissue specificity	Highly expressed in heart, brain, placenta, lung, liver, skeletal muscle, kidney and pancreas.
Pathway	Protein modification; protein glycosylation.
Sequence similarities	Belongs to the glycosyltransferase 68 family.
Cellular localization	Endoplasmic reticulum.

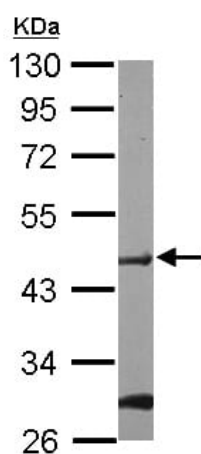
Images



Anti-Pofut1 antibody (ab154051) at 1/1000 dilution + HCT116 whole cell lysate at 30 µg

Predicted band size: 44 kDa

12% SDS PAGE

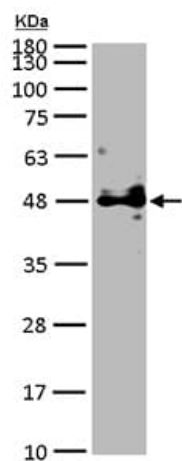


Western blot - Anti-Pofut1 antibody (ab154051)

Anti-Pofut1 antibody (ab154051) at 1/1000 dilution + Mouse liver whole cell lysate at 50 μ g

Predicted band size: 44 kDa

10% SDS PAGE

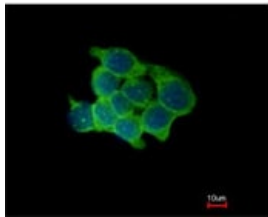
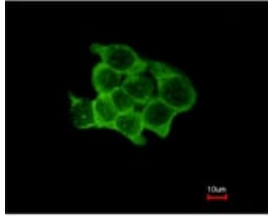


Western blot - Anti-Pofut1 antibody (ab154051)

Anti-Pofut1 antibody (ab154051) at 1/5000 dilution + HUVEC whole cell lysate at 15 μ g

Predicted band size: 44 kDa

12% SDS PAGE



Immunofluorescent analysis of methanol-fixed HCT116 cells, labeling Pofut1 with ab154051 at 1/500 dilution. Lower image shows cells co-stained with Hoechst 33342.

Immunocytochemistry/ Immunofluorescence - Anti-Pofut1 antibody (ab154051)

Please note: All products are "FOR RESEARCH USE ONLY. NOT FOR USE IN DIAGNOSTIC PROCEDURES"

Our Abpromise to you: Quality guaranteed and expert technical support

- Replacement or refund for products not performing as stated on the datasheet
- Valid for 12 months from date of delivery
- Response to your inquiry within 24 hours
- We provide support in Chinese, English, French, German, Japanese and Spanish
- Extensive multi-media technical resources to help you
- We investigate all quality concerns to ensure our products perform to the highest standards

If the product does not perform as described on this datasheet, we will offer a refund or replacement. For full details of the Abpromise, please visit <https://www.abcam.com/abpromise> or contact our technical team.

Terms and conditions

- Guarantee only valid for products bought direct from Abcam or one of our authorized distributors