




Product datasheet

Anti-POLD1 antibody ab168827

[1 References](#) [2 Images](#)

Overview

Product name	Anti-POLD1 antibody
Description	Rabbit polyclonal to POLD1
Host species	Rabbit
Tested applications	Suitable for: IHC-P, WB
Species reactivity	Reacts with: Mouse, Human Predicted to work with: Horse, Pig, Chimpanzee, Ferret, Rhesus monkey, Gorilla, Orangutan, Bat 
Immunogen	Synthetic peptide corresponding to Human POLD1 aa 50-100. Sequence: LQEQEEEEELQSVLEGVADGQVPPSAIDPRWLRPTPPALD PQTEPLIFQQL E Database link: NP_002682.2  Run BLAST with  Run BLAST with
Positive control	WB: HeLa, 293T, Jurkat, Mouse TCMK-1 and Mouse NIH3T3 whole cell lysates. IHC-P: Human ovarian carcinoma.
General notes	<p>The Life Science industry has been in the grips of a reproducibility crisis for a number of years. Abcam is leading the way in addressing this with our range of recombinant monoclonal antibodies and knockout edited cell lines for gold-standard validation. Please check that this product meets your needs before purchasing.</p> <p>If you have any questions, special requirements or concerns, please send us an inquiry and/or contact our Support team ahead of purchase. Recommended alternatives for this product can be found below, along with publications, customer reviews and Q&As</p>

Properties

Form	Liquid
Storage instructions	Shipped at 4°C. Store at +4°C short term (1-2 weeks). Upon delivery aliquot. Store at -20°C long term.
Storage buffer	pH: 7 Preservative: 0.09% Sodium azide

Constituent: 99% Tris citrate/phosphate

pH 7 to 8

Purity Immunogen affinity purified
Clonality Polyclonal
Isotype IgG

Applications

The Abpromise guarantee Our **Abpromise guarantee** covers the use of ab168827 in the following tested applications. The application notes include recommended starting dilutions; optimal dilutions/concentrations should be determined by the end user.

Application	Abreviews	Notes
IHC-P		1/1000 - 1/5000.
WB		1/2000 - 1/10000. Predicted molecular weight: 124 kDa.

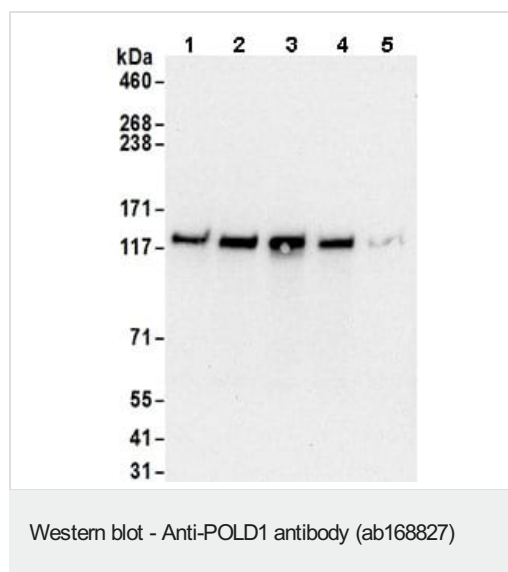
Target

Function Possesses two enzymatic activities: DNA synthesis (polymerase) and an exonucleolytic activity that degrades single stranded DNA in the 3'- to 5'-direction. Required with its accessory proteins (proliferating cell nuclear antigen (PCNA) and replication factor C (RFC) or activator 1) for leading strand synthesis. Also involved in completing Okazaki fragments initiated by the DNA polymerase alpha/primase complex.

Sequence similarities Belongs to the DNA polymerase type-B family.

Cellular localization Nucleus.

Images



All lanes : Anti-POLD1 antibody (ab168827) at 0.1 µg/ml

Lane 1 : HeLa whole cell lysate

Lane 2 : 293T whole cell lysate

Lane 3 : Jurkat whole cell lysate

Lane 4 : TCMK-1 whole cell lysate

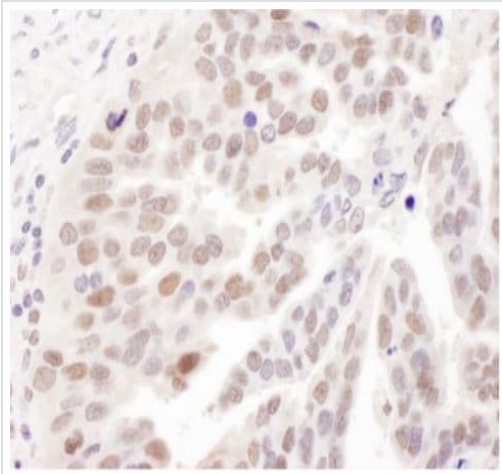
Lane 5 : NIH3T3 whole cell lysate

Lysates/proteins at 50 µg per lane.

Developed using the ECL technique.

Predicted band size: 124 kDa

Exposure time: 10 seconds



Immunohistochemistry (Formalin/PFA-fixed paraffin-embedded sections) - Anti-POLD1 antibody (ab168827)

Paraffin embedded human ovarian carcinoma tissue stained for POLD1 using ab168827 at 1/1000 dilution in immunohistochemical analysis.

Please note: All products are "FOR RESEARCH USE ONLY. NOT FOR USE IN DIAGNOSTIC PROCEDURES"

Our Abpromise to you: Quality guaranteed and expert technical support

- Replacement or refund for products not performing as stated on the datasheet
- Valid for 12 months from date of delivery
- Response to your inquiry within 24 hours
- We provide support in Chinese, English, French, German, Japanese and Spanish
- Extensive multi-media technical resources to help you
- We investigate all quality concerns to ensure our products perform to the highest standards

If the product does not perform as described on this datasheet, we will offer a refund or replacement. For full details of the Abpromise, please visit <https://www.abcam.com/abpromise> or contact our technical team.

Terms and conditions

- Guarantee only valid for products bought direct from Abcam or one of our authorized distributors