


## Product datasheet

### Anti-POLDIP2 antibody ab68663

KO VALIDATED

2 Images

#### Overview

Product name	Anti-POLDIP2 antibody
Description	Rabbit polyclonal to POLDIP2
Host species	Rabbit
Tested applications	<b>Suitable for:</b> WB
Species reactivity	<b>Reacts with:</b> Human <b>Predicted to work with:</b> Mouse, Rat, Chicken, Cow 
Immunogen	Synthetic peptide. This information is proprietary to Abcam and/or its suppliers.
Positive control	This antibody gave a positive signal in Human Liver Tissue Lysate.
General notes	<p>The Life Science industry has been in the grips of a reproducibility crisis for a number of years. Abcam is leading the way in addressing this with our range of recombinant monoclonal antibodies and knockout edited cell lines for gold-standard validation. Please check that this product meets your needs before purchasing.</p> <p>If you have any questions, special requirements or concerns, please send us an inquiry and/or contact our Support team ahead of purchase. Recommended alternatives for this product can be found below, along with publications, customer reviews and Q&amp;As</p>

#### Properties

Form	Liquid
Storage instructions	Shipped at 4°C. Store at +4°C short term (1-2 weeks). Upon delivery aliquot. Store at -20°C or -80°C. Avoid freeze / thaw cycle.
Storage buffer	pH: 7.40 Preservative: 0.02% Sodium azide Constituent: PBS  Batches of this product that have a concentration < 1mg/ml may have BSA added as a stabilising agent. If you would like information about the formulation of a specific lot, please contact our scientific support team who will be happy to help.
Purity	Immunogen affinity purified

Clonality	Polyclonal
Isotype	IgG

## Applications

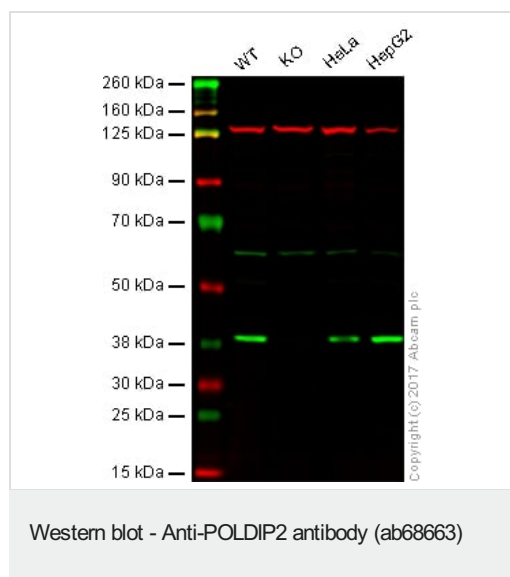
**The Abpromise guarantee** Our **Abpromise guarantee** covers the use of ab68663 in the following tested applications. The application notes include recommended starting dilutions; optimal dilutions/concentrations should be determined by the end user.

Application	Abreviews	Notes
WB		Use a concentration of 1 µg/ml. Detects a band of approximately 42 kDa (predicted molecular weight: 42 kDa).

## Target

Sequence similarities	Contains 1 apaG domain.
Cellular localization	Nucleus.

## Images



**Lane 1:** Wild-type HAP1 whole cell lysate (20 µg)

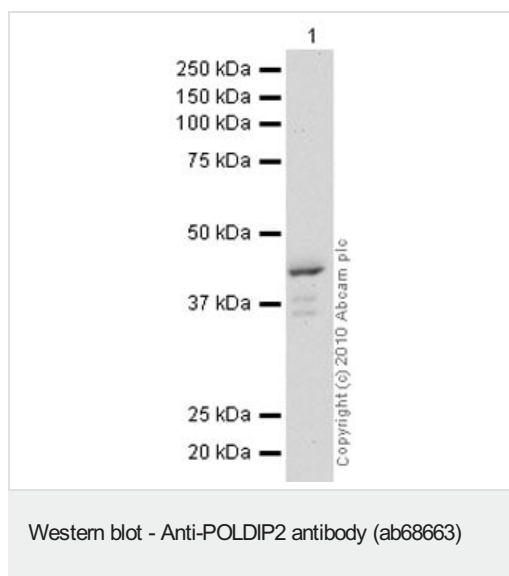
**Lane 2:** POLDIP2 knockout HAP1 whole cell lysate (20 µg)

**Lane 3:** HeLa whole cell lysate (20 µg)

**Lane 4:** HepG2 whole cell lysate (20 µg)

**Lanes 1 - 4:** Merged signal (red and green). Green - ab68663 observed at 40 kDa. Red - loading control, **ab18058**, observed at 130 kDa.

ab68663 was shown to specifically recognize POLDIP2 in wild-type HAP1 cells along with additional cross reactive bands. No band was observed when POLDIP2 knockout cells were examined. Wild-type and POLDIP2 knockout samples were subjected to SDS-PAGE. ab68663 and **ab18058** (Mouse anti-Vinculin loading control) were incubated overnight at 4°C at 1 µg/ml and 1/20,000 dilution respectively. Blots were developed with Goat anti-Rabbit IgG H&L (IRDye® 800CW) preabsorbed (**ab216773**) and Goat anti-Mouse IgG H&L (IRDye® 680RD) preabsorbed (**ab216776**) secondary antibodies at 1/20,000 dilution for 1 hour at room temperature before imaging.



Anti-POLDIP2 antibody (ab68663) at 1 µg/ml + Liver (Human)  
Tissue Lysate at 10 µg

#### Secondary

Goat polyclonal to Rabbit IgG - H&L - Pre-Adsorbed (HRP) at  
1/3000 dilution

Developed using the ECL technique.

Performed under reducing conditions.

**Predicted band size:** 42 kDa

**Exposure time:** 20 minutes

**Please note:** All products are "FOR RESEARCH USE ONLY. NOT FOR USE IN DIAGNOSTIC PROCEDURES"

#### Our Abpromise to you: Quality guaranteed and expert technical support

---

- Replacement or refund for products not performing as stated on the datasheet
- Valid for 12 months from date of delivery
- Response to your inquiry within 24 hours
- We provide support in Chinese, English, French, German, Japanese and Spanish
- Extensive multi-media technical resources to help you
- We investigate all quality concerns to ensure our products perform to the highest standards

If the product does not perform as described on this datasheet, we will offer a refund or replacement. For full details of the Abpromise, please visit <https://www.abcam.com/abpromise> or contact our technical team.

#### Terms and conditions

---

- Guarantee only valid for products bought direct from Abcam or one of our authorized distributors