


## Product datasheet

# Anti-POLR2E/rpb5 antibody [EPR11750] - BSA and Azide free ab250160

Recombinant RabMAb

5 Images

### Overview

|                            |  |
|----------------------------|--|
| <b>Product name</b>        | Anti-POLR2E/rpb5 antibody [EPR11750] - BSA and Azide free  |
| <b>Description</b>         | Rabbit monoclonal [EPR11750] to POLR2E/rpb5 - BSA and Azide free   |
| <b>Host species</b>        | Rabbit   |
| <b>Tested applications</b> | <b>Suitable for:</b> WB, IHC-P, Flow Cyt (Intra)   |
| <b>Species reactivity</b>  | <b>Reacts with:</b> Human<br><b>Predicted to work with:</b> Mouse, Rat    |
| <b>Immunogen</b>           | Synthetic peptide. This information is proprietary to Abcam and/or its suppliers.  |
| <b>General notes</b>       | <p>ab250160 is the carrier-free version of <a href="#">ab180151</a>.</p> <p>Our <b>carrier-free</b> antibodies are typically supplied in a PBS-only formulation, purified and free of BSA, sodium azide and glycerol. The carrier-free buffer and high concentration allow for increased conjugation efficiency.</p> <p>This conjugation-ready format is designed for use with fluorochromes, metal isotopes, oligonucleotides, and enzymes, which makes them ideal for antibody labelling, functional and cell-based assays, flow-based assays (e.g. mass cytometry) and Multiplex Imaging applications.</p> <p>Use our <b>conjugation kits</b> for antibody conjugates that are ready-to-use in as little as 20 minutes with &lt;1 minute hands-on-time and 100% antibody recovery: available for fluorescent dyes, HRP, biotin and gold.</p> <p>This product is compatible with the Maxpar<sup>®</sup> Antibody Labeling Kit from Fluidigm, without the need for antibody preparation. Maxpar<sup>®</sup> is a trademark of Fluidigm Canada Inc.</p> <p>This product is a recombinant monoclonal antibody, which offers several advantages including:</p> <ul style="list-style-type: none"><li>- High batch-to-batch consistency and reproducibility</li><li>- Improved sensitivity and specificity</li><li>- Long-term security of supply</li><li>- Animal-free production</li></ul> <p>For more information <a href="#">see here</a>.</p> <p>Our RabMAb<sup>®</sup> technology is a patented hybridoma-based technology for making rabbit monoclonal antibodies. For details on our patents, please refer to <a href="#">RabMAb<sup>®</sup> patents</a>.</p> |

## Properties

---

|                             |   |
|-----------------------------|---|
| <b>Form</b>                 | Liquid  |
| <b>Storage instructions</b> | Shipped at 4°C. Store at +4°C. Do Not Freeze. |
| <b>Storage buffer</b>       | pH: 7.2<br>Constituent: PBS                   |
| <b>Carrier free</b>         | Yes   |
| <b>Purity</b>               | Affinity purified                             |
| <b>Clonality</b>            | Monoclonal                                    |
| <b>Clone number</b>         | EPR11750                                      |
| <b>Isotype</b>              | IgG   |

## Applications

---

**The Abpromise guarantee** Our **Abpromise guarantee** covers the use of ab250160 in the following tested applications. The application notes include recommended starting dilutions; optimal dilutions/concentrations should be determined by the end user.

| Application             | Abreviews | Notes  |
|-------------------------|-----------|--|
| <b>WB</b>               |           | Use at an assay dependent concentration. Detects a band of approximately 25 kDa (predicted molecular weight: 25 kDa).          |
| <b>IHC-P</b>            |           | Use at an assay dependent concentration. Perform heat mediated antigen retrieval before commencing with IHC staining protocol. |
| <b>Flow Cyt (Intra)</b> |           | Use at an assay dependent concentration.   |

## Target

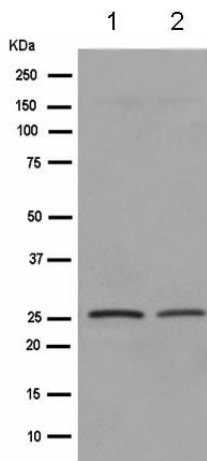
---

|                              |   |
|------------------------------|---|
| <b>Function</b>              | DNA-dependent RNA polymerase catalyzes the transcription of DNA into RNA using the four ribonucleoside triphosphates as substrates. Common component of RNA polymerases I, II and III which synthesize ribosomal RNA precursors, mRNA precursors and many functional non-coding RNAs, and small RNAs, such as 5S rRNA and tRNAs, respectively. Pol II is the central component of the basal RNA polymerase II transcription machinery. Pols are composed of mobile elements that move relative to each other. In Pol II, POLR2E/RPB5 is part of the lower jaw surrounding the central large cleft and thought to grab the incoming DNA template. Seems to be the major component in this process. |
| <b>Sequence similarities</b> | Belongs to the archaeal rpoH/eukaryotic RPB5 RNA polymerase subunit family.   |
| <b>Cellular localization</b> | Nucleus.  |

---

## Images

---



Western blot - Anti-POLR2E/rpb5 antibody [EPR11750] - BSA and Azide free (ab250160)

**All lanes** : Anti-POLR2E/rpb5 antibody [EPR11750] (**ab180151**) at 1/20000 dilution

**Lane 1** : A431 cell lysate

**Lane 2** : HeLa cell lysate

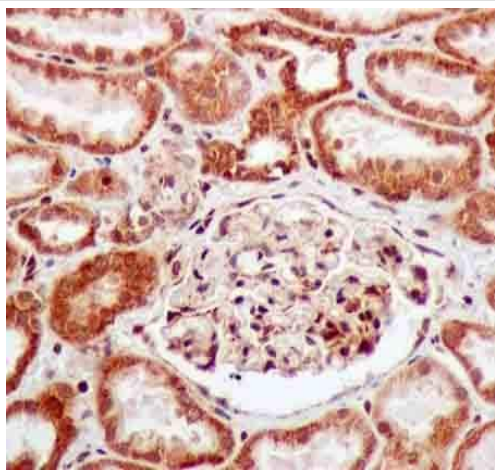
Lysates/proteins at 20 µg per lane.

**Secondary**

**All lanes** : Goat Anti-Rabbit IgG, (H+L), Peroxidase conjugated at 1/1000 dilution

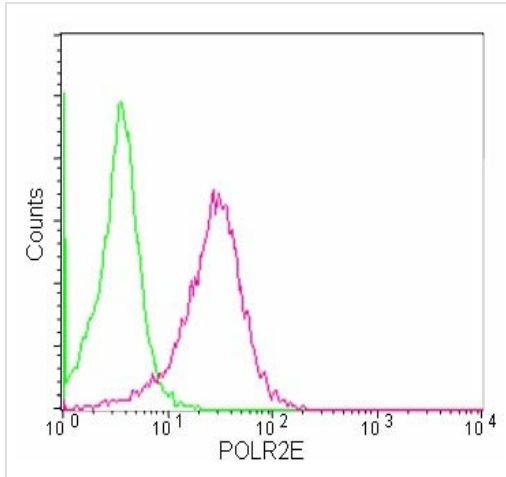
**Predicted band size:** 25 kDa

This data was developed using **ab180151**, the same antibody clone in a different buffer formulation.



Immunohistochemistry (Formalin/PFA-fixed paraffin-embedded sections) - Anti-POLR2E/rpb5 antibody [EPR11750] - BSA and Azide free (ab250160)

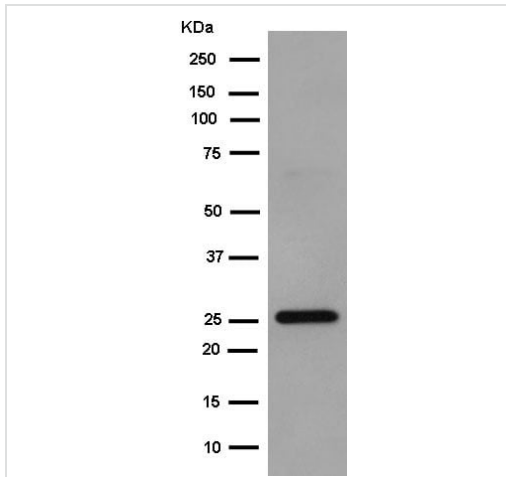
This data was developed using **ab180151**, the same antibody clone in a different buffer formulation. Immunohistochemical analysis of paraffin-embedded Human kidney tissue labeling POLR2E/rpb5 with **ab180151** at 1/100 dilution, followed by prediluted Goat anti rabbit IgG (HRP). Counter stained with Hematoxylin. Perform heat mediated antigen retrieval before commencing with IHC staining protocol.



Flow Cytometry (Intracellular) - Anti-POLR2E/rpb5 antibody [EPR11750] - BSA and Azide free (ab250160)

This data was developed using [ab180151](#), the same antibody clone in a different buffer formulation.

Intracellular flow cytometric analysis of 2% paraformaldehyde-fixed HeLa cells labeling POLR2E/rpb5 with [ab180151](#) at 1/10 dilution followed by Goat anti rabbit IgG (FITC) at 1/75 dilution (red), compared to a Rabbit IgG control (green).



Western blot - Anti-POLR2E/rpb5 antibody [EPR11750] - BSA and Azide free (ab250160)

Anti-POLR2E/rpb5 antibody [EPR11750] ([ab180151](#)) at 1/5000 dilution + HepG2 cell lysate at 20  $\mu$ g

### Secondary

Goat Anti-Rabbit IgG, (H+L), Peroxidase conjugated at 1/1000 dilution

**Predicted band size:** 25 kDa

This data was developed using [ab180151](#), the same antibody clone in a different buffer formulation.

### Why choose a recombinant antibody?



**Research with confidence**  
Consistent and reproducible results



**Long-term and scalable supply**  
Recombinant technology



**Success from the first experiment**  
Confirmed specificity



**Ethical standards compliant**  
Animal-free production

Anti-POLR2E/rpb5 antibody [EPR11750] - BSA and Azide free (ab250160)

**Please note:** All products are "FOR RESEARCH USE ONLY. NOT FOR USE IN DIAGNOSTIC PROCEDURES"

### Our Abpromise to you: Quality guaranteed and expert technical support

---

- Replacement or refund for products not performing as stated on the datasheet
- Valid for 12 months from date of delivery
- Response to your inquiry within 24 hours
- We provide support in Chinese, English, French, German, Japanese and Spanish
- Extensive multi-media technical resources to help you
- We investigate all quality concerns to ensure our products perform to the highest standards

If the product does not perform as described on this datasheet, we will offer a refund or replacement. For full details of the Abpromise, please visit <https://www.abcam.com/abpromise> or contact our technical team.

### Terms and conditions

---

- Guarantee only valid for products bought direct from Abcam or one of our authorized distributors