

Product datasheet

Anti-Polyethylene glycol antibody [EPR21993-154] - Mouse IgG2b (Chimeric) ab275332

Recombinant

2 Images

Overview

Product name	Anti-Polyethylene glycol antibody [EPR21993-154] - Mouse IgG2b (Chimeric)
Description	Mouse monoclonal [EPR21993-154] to Polyethylene glycol - Mouse IgG2b
Host species	Mouse
Tested applications	Suitable for: WB, Indirect ELISA
Species reactivity	Reacts with: Species independent
Immunogen	Chemical/ Small Molecule. This information is proprietary to Abcam and/or its suppliers.
Positive control	WB: BSA-methoxy PEG 5K.
General notes	<p>This mouse monoclonal chimeric antibody has been engineered from a RabMAb parent antibody ab203857. By necessity, some rabbit sequence is retained as part of the variable domain. When multiplexing with other rabbit-derived antibodies, using cross absorbed Fc-reactive secondary antibodies are recommended.</p> <p>This product is a recombinant monoclonal antibody, which offers several advantages including:</p> <ul style="list-style-type: none">- High batch-to-batch consistency and reproducibility- Improved sensitivity and specificity- Long-term security of supply- Animal-free production <p>For more information see here.</p>

Properties

Form	Liquid
Storage instructions	Shipped at 4°C. Store at +4°C short term (1-2 weeks). Upon delivery aliquot. Store at -20°C long term. Avoid freeze / thaw cycle.
Storage buffer	Preservative: 0.01% Sodium azide Constituents: 59.04% PBS, 40% Glycerol, 0.05% BSA
Purity	Protein A purified
Clonality	Monoclonal
Clone number	EPR21993-154

Isotype

IgG2b

Applications

The Abpromise guarantee

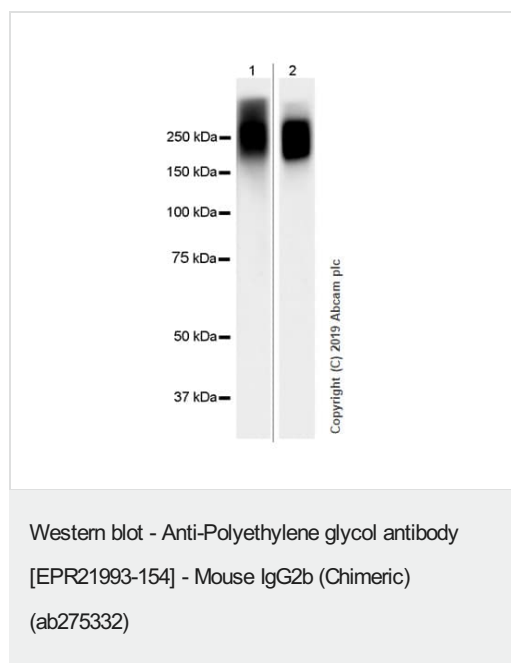
Our **Abpromise guarantee** covers the use of ab275332 in the following tested applications.

The application notes include recommended starting dilutions; optimal dilutions/concentrations should be determined by the end user.

Application	Abreviews	Notes
WB		1/5000.
Indirect ELISA		Use at an assay dependent concentration. Use at 50ng/ml.

Target

Images



Lane 1 : Anti-Polyethylene glycol antibody [EPR21993-154] - Mouse IgG2b (Chimeric) (ab275332) at 1/5000 dilution

Lane 2 : Anti-Polyethylene glycol antibody [EPR21993-154] (**ab203857**) at 1/5000 dilution

All lanes : BSA-methoxy PEG 5K, 10 ng

Secondary

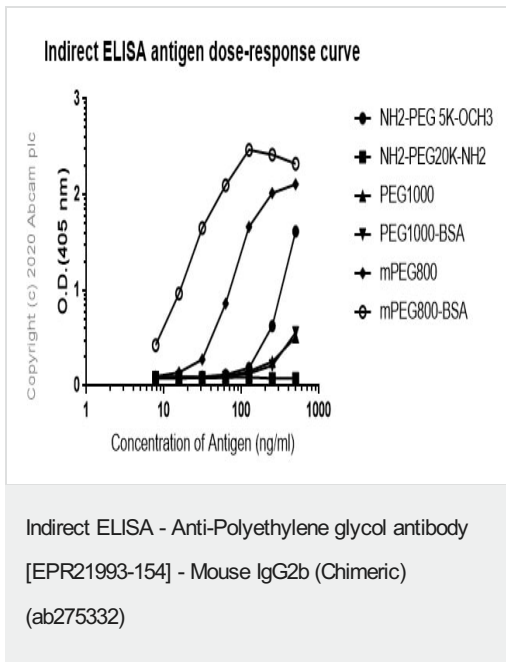
Lane 1 : Peroxidase-Conjugated Goat anti-Mouse IgG (H+L) at 1/10000 dilution

Lane 2 : Goat Anti-Rabbit IgG H&L (HRP) (**ab97051**) at 1/10000 dilution

Observed band size: 250 kDa

Exposure time: 30 seconds

Blocking/Dilution buffer: 5% NFD/MTBST.



ELISA - Anti-Polyethylene glycol antibody [EPR21993-154] (ab275332, 50 ng/ml).

Antigen used at 0-500ng: NH2-PEG 5K-OCH3, NH2-PEG20K-NH2, PEG1000, PEG1000-BSA, mPEG800, mPEG800-BSA.

Secondary antibody used at 1/1000: Alkaline Phosphatase-conjugated AffiniPure Goat Anti-Mouse IgG (H&L).

Please note: All products are "FOR RESEARCH USE ONLY. NOT FOR USE IN DIAGNOSTIC PROCEDURES"

Our Abpromise to you: Quality guaranteed and expert technical support

- Replacement or refund for products not performing as stated on the datasheet
- Valid for 12 months from date of delivery
- Response to your inquiry within 24 hours
- We provide support in Chinese, English, French, German, Japanese and Spanish
- Extensive multi-media technical resources to help you
- We investigate all quality concerns to ensure our products perform to the highest standards

If the product does not perform as described on this datasheet, we will offer a refund or replacement. For full details of the Abpromise, please visit <https://www.abcam.com/abpromise> or contact our technical team.

Terms and conditions

- Guarantee only valid for products bought direct from Abcam or one of our authorized distributors