

Product datasheet

Anti-Polyethylene glycol antibody [RM105] ab190652

Recombinant

[1 References](#) [3 Images](#)

Overview

Product name	Anti-Polyethylene glycol antibody [RM105]
Description	Rabbit monoclonal [RM105] to Polyethylene glycol
Host species	Rabbit
Tested applications	Suitable for: ICC, WB, ELISA, IHC-P, Flow Cyt, IP
Immunogen	Chemical/ Small Molecule corresponding to Polyethylene glycol conjugated to Keyhole Limpet Haemocyanin (KLH). (KLH-PEG with terminal methoxy group).
Positive control	PEGylated BSA.
General notes	<p>Tween 20 usage: Tween 20 is a detergent that can interfere with ELISA and potentially other applications (often used in antibody dilution buffers, such as TBST) when using anti-PEG products. Our anti-mPEG antibody (RM105) reacts to the methoxy group of Polyethylene glycol (PEG). There is no methoxy group in Tween 20, which should not interfere with the function of this antibody. This detergent can safely be used in ELISA assays.</p> <p>Learn more about PEG RabMAb products and kit - PEG RabMAb Product Portal Page</p>

Properties

Form	Liquid
Storage instructions	Shipped at 4°C. Store at +4°C short term (1-2 weeks). Upon delivery aliquot. Store at -20°C long term. Avoid freeze / thaw cycle.
Storage buffer	Preservative: 0.09% Sodium azide Constituents: 1% BSA, 48% PBS, 50% Glycerol (glycerin, glycerine)
Purity	Protein A purified
Purification notes	ab190652 was purified from an animal origin-free and protein-free culture supernatant.
Clonality	Monoclonal
Clone number	RM105
Isotype	IgG

Applications

The Abpromise guarantee

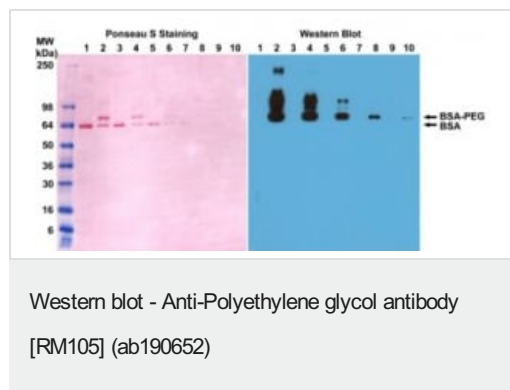
Our **Abpromise guarantee** covers the use of ab190652 in the following tested applications.

The application notes include recommended starting dilutions; optimal dilutions/concentrations should be determined by the end user.

Application	Abreviews	Notes
ICC		Use at an assay dependent concentration.
WB		Use a concentration of 0.05 - 1 µg/ml.
ELISA		Use a concentration of 0.01 - 0.3 mg/ml.
IHC-P		Use a concentration of 0.5 - 2 µg/ml.
Flow Cyt		Use at an assay dependent concentration. ab172730 - Rabbit monoclonal IgG, is suitable for use as an isotype control with this antibody.
IP		Use at an assay dependent concentration.

Target

Images



All lanes : Anti-Polyethylene glycol antibody [RM105] (ab190652)
at 0.1 µg/ml

Lane 1 : BSA at 0.2 µg

Lane 2 : PEGylated BSA at 0.2 µg

Lane 3 : BSA at 0.1 µg

Lane 4 : PEGylated BSA at 0.1 µg

Lane 5 : BSA at 0.05 µg

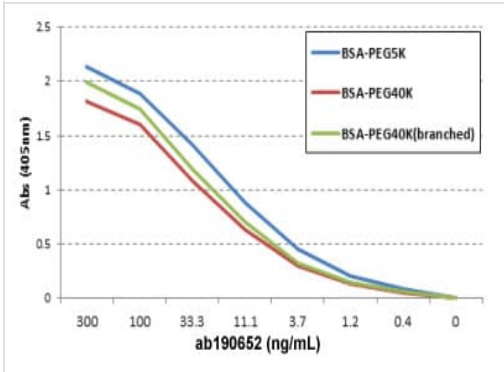
Lane 6 : PEGylated BSA at 0.05 µg

Lane 7 : BSA at 0.02 µg

Lane 8 : PEGylated BSA at 0.02 µg

Lane 9 : BSA at 0.01 µg

Lane 10 : PEGylated BSA at 0.01 µg



ELISA of three different PEGylated BSA using ab190652 at 0.3 µg/ml, following AP conjugated goat anti-rabbit IgG.

ELISA - Anti-Polyethylene glycol antibody [RM105]
(ab190652)

Why choose a recombinant antibody?

Research with confidence
Consistent and reproducible results

Long-term and scalable supply
Recombinant technology

Success from the first experiment
Confirmed specificity

Ethical standards compliant
Animal-free production

Anti-Polyethylene glycol antibody [RM105]
(ab190652)

Please note: All products are "FOR RESEARCH USE ONLY. NOT FOR USE IN DIAGNOSTIC PROCEDURES"

Our Promise to you: Quality guaranteed and expert technical support

- Replacement or refund for products not performing as stated on the datasheet
- Valid for 12 months from date of delivery
- Response to your inquiry within 24 hours
- We provide support in Chinese, English, French, German, Japanese and Spanish

- Extensive multi-media technical resources to help you
- We investigate all quality concerns to ensure our products perform to the highest standards

If the product does not perform as described on this datasheet, we will offer a refund or replacement. For full details of the Abpromise, please visit <https://www.abcam.com/abpromise> or contact our technical team.

Terms and conditions

- Guarantee only valid for products bought direct from Abcam or one of our authorized distributors