

Anti-POPDC2/POP2 antibody ab69176

[1 Abreviews](#) [1 Image](#)

Overview

Product name	Anti-POPDC2/POP2 antibody
Description	Mouse polyclonal to POPDC2/POP2
Host species	Mouse
Tested applications	Suitable for: WB
Species reactivity	Reacts with: Human
Immunogen	<p>Recombinant full length protein within Human POPDC2/POP2. The exact immunogen sequence used to generate this antibody is proprietary information. If additional detail on the immunogen is needed to determine the suitability of the antibody for your needs, please <u>contact</u> our Scientific Support team to discuss your requirements.</p> <p>Database link: <u>NP_071418</u></p>
Positive control	POPDC2/POP2 transfected 293T lysate.
General notes	<p>The Life Science industry has been in the grips of a reproducibility crisis for a number of years. Abcam is leading the way in addressing this with our range of recombinant monoclonal antibodies and knockout edited cell lines for gold-standard validation. Please check that this product meets your needs before purchasing.</p> <p>If you have any questions, special requirements or concerns, please send us an inquiry and/or contact our Support team ahead of purchase. Recommended alternatives for this product can be found below, along with publications, customer reviews and Q&As</p>

Properties

Form	Liquid
Storage instructions	Shipped at 4°C. Upon delivery aliquot and store at -20°C or -80°C. Avoid repeated freeze / thaw cycles.
Storage buffer	<p>pH: 7.4</p> <p>Constituent: PBS</p>
Purity	Protein A purified
Clonality	Polyclonal
Isotype	IgG

Applications

The Abpromise guarantee

Our **Abpromise guarantee** covers the use of ab69176 in the following tested applications.

The application notes include recommended starting dilutions; optimal dilutions/concentrations should be determined by the end user.

Application	Abreviews	Notes
WB		1/500 - 1/1000. Detects a band of approximately 45 kDa (predicted molecular weight: 40 kDa).

Target

Function

Important for the maintenance of cardiac function. Plays a regulatory function in heart rate dynamics mediated, at least in part, through cAMP-binding and, probably, by increasing cell surface expression of the potassium channel KCNK2 and enhancing current density.

Tissue specificity

Expressed predominantly in the heart and in the skeletal muscle.

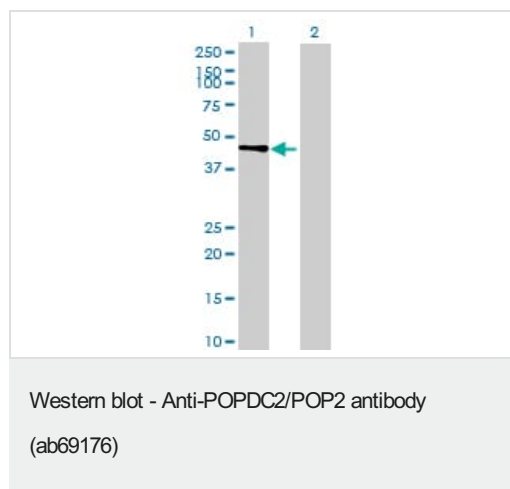
Sequence similarities

Belongs to the popeye family.

Cellular localization

Membrane. Cell membrane, sarcolemma.

Images



All lanes : Anti-POPDC2/POP2 antibody (ab69176) at 1/500 dilution

Lane 1 : POPDC2/POP2 transfected 293T lysate

Lane 2 : Non-transfected 293T lysate

Lysates/proteins at 25 µg per lane.

Secondary

Lane 1 : Goat Anti-Mouse IgG (H&L)-HRP at 1/2500 dilution

Lane 2 : Goat Anti-Mouse IgG (H&L)-HRP at 1/2500 dilution

Predicted band size: 40 kDa

Observed band size: 45 kDa

Please note: All products are "FOR RESEARCH USE ONLY. NOT FOR USE IN DIAGNOSTIC PROCEDURES"

Our Abpromise to you: Quality guaranteed and expert technical support

- Replacement or refund for products not performing as stated on the datasheet
- Valid for 12 months from date of delivery

- Response to your inquiry within 24 hours
- We provide support in Chinese, English, French, German, Japanese and Spanish
- Extensive multi-media technical resources to help you
- We investigate all quality concerns to ensure our products perform to the highest standards

If the product does not perform as described on this datasheet, we will offer a refund or replacement. For full details of the Abpromise, please visit <https://www.abcam.com/abpromise> or contact our technical team.

Terms and conditions

- Guarantee only valid for products bought direct from Abcam or one of our authorized distributors