

Product datasheet

Anti-POR1 antibody [EPR11943] ab180503

Recombinant RabMAb

[7 Images](#)

Overview

Product name	Anti-POR1 antibody [EPR11943]
Description	Rabbit monoclonal [EPR11943] to POR1
Host species	Rabbit
Tested applications	Suitable for: Flow Cyt (Intra), WB, IHC-P, ICC/IF, IP
Species reactivity	Reacts with: Human
Immunogen	Synthetic peptide. This information is proprietary to Abcam and/or its suppliers.
Positive control	SH-SY5Y, MCF-7, HeLa and HepG2 whole cell lysate (ab7900); Human gastric carcinoma tissue; SH-SY5Y cells.
General notes	<p>This product is a recombinant monoclonal antibody, which offers several advantages including:</p> <ul style="list-style-type: none">- High batch-to-batch consistency and reproducibility- Improved sensitivity and specificity- Long-term security of supply- Animal-free production <p>For more information see here.</p> <p>Our RabMAb[®] technology is a patented hybridoma-based technology for making rabbit monoclonal antibodies. For details on our patents, please refer to RabMAb[®] patents.</p>

Properties

Form	Liquid
Storage instructions	Shipped at 4°C. Store at +4°C short term (1-2 weeks). Upon delivery aliquot. Store at -20°C long term. Avoid freeze / thaw cycle.
Storage buffer	Preservative: 0.01% Sodium azide Constituents: 59% PBS, 40% Glycerol (glycerin, glycerine), 0.05% BSA
Purity	Protein A purified
Clonality	Monoclonal
Clone number	EPR11943
Isotype	IgG

Applications

The Abpromise guarantee

Our **Abpromise guarantee** covers the use of ab180503 in the following tested applications.

The application notes include recommended starting dilutions; optimal dilutions/concentrations should be determined by the end user.

Application	Abreviews	Notes
Flow Cyt (Intra)		1/150. ab172730 - Rabbit monoclonal IgG, is suitable for use as an isotype control with this antibody.
WB		1/1000 - 1/10000. Predicted molecular weight: 38 kDa.
IHC-P		1/250 - 1/500. Perform heat mediated antigen retrieval with Tris/EDTA buffer pH 9.0 before commencing with IHC staining protocol.
ICC/IF		1/1000.
IP		1/30.

Target

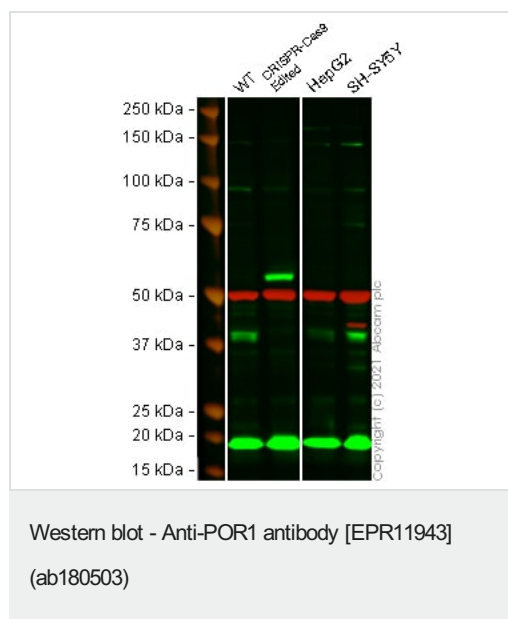
Function

Putative target protein of ADP-ribosylation factor. Involved in membrane ruffling.

Sequence similarities

Contains 1 AH domain.

Images



All lanes : Anti-POR1 antibody [EPR11943] (ab180503) at 1/1000 dilution

Lane 1 : Wild-type HeLa cell lysate

Lane 2 : ARFIP2 CRISPR-Cas9 Edited HeLa cell lysate

Lane 3 : HepG2 cell lysate

Lane 4 : SH-SY5Y cell lysate

Lysates/proteins at 20 µg per lane.

Performed under reducing conditions.

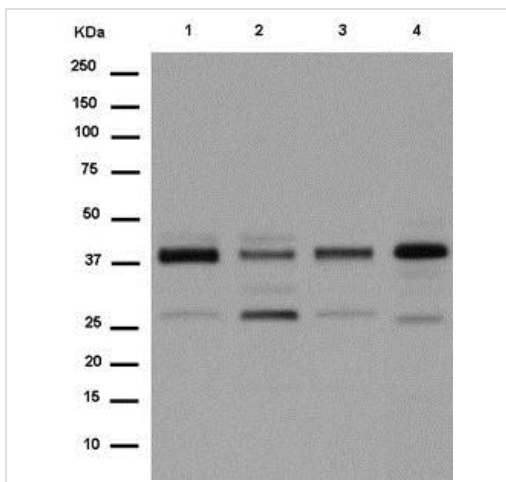
Predicted band size: 38 kDa

Observed band size: 38 kDa

Lanes 1 - 4: Merged signal (red and green). Green - ab180503

observed at 38 kDa. Red - loading control, **ab7291** (Mouse anti-Alpha Tubulin [DM1A]) observed at 55 kDa.

ab180503 was shown to react with POR1 in western blot. The band observed in the knockout lysate lane above 38 kDa is likely to represent an inserted form. This has not been investigated further. Membranes were blocked in fluorescent western blot (TBS-based) blocking solution before incubation with ab180503 and **ab7291** (Mouse anti-Alpha Tubulin [DM1A]) overnight at 4 °C at a 1 in 1000 dilution and a 1 in 20000 dilution respectively. Blots were incubated with Goat anti-Rabbit IgG H&L (IRDye® 800CW) preabsorbed (**ab216773**) and Goat anti-Mouse IgG H&L (IRDye® 680RD) preabsorbed (**ab216776**) secondary antibodies at 1 in 20000 dilution for 1 h at room temperature before imaging.



Western blot - Anti-POR1 antibody [EPR11943] (ab180503)

All lanes : Anti-POR1 antibody [EPR11943] (ab180503) at 1/5000 dilution

Lane 1 : SH-SY5Y cell lysate

Lane 2 : MCF-7 cell lysate

Lane 3 : HeLa cell lysate

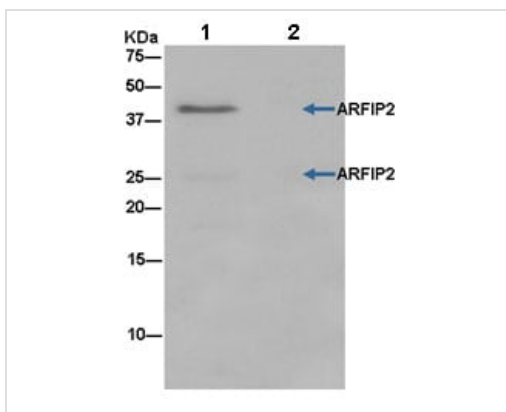
Lane 4 : HepG2 cell lysate

Lysates/proteins at 20 µg per lane.

Secondary

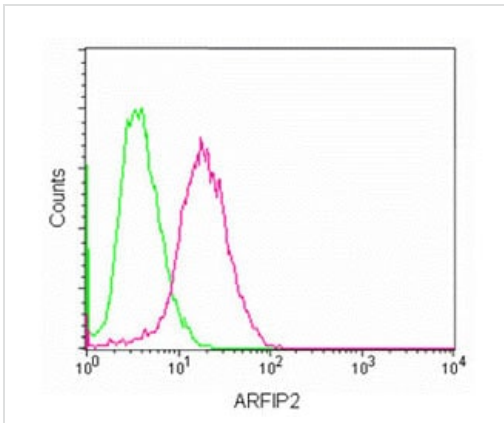
All lanes : Goat anti-rabbit IgG, (H+L), peroxidase conjugated at 1/1000 dilution

Predicted band size: 38 kDa



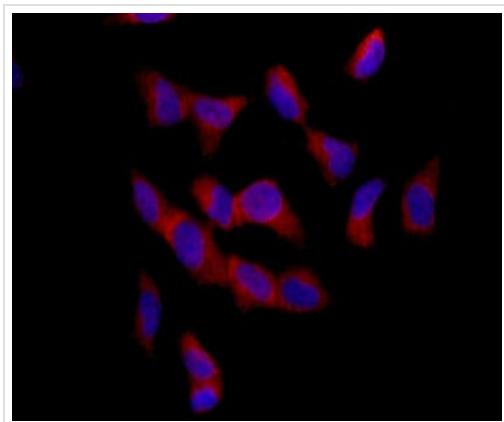
Immunoprecipitation - Anti-POR1 antibody [EPR11943] (ab180503)

Western blot analysis of SH-SY5Y cell lysate (Lane 1) and Negative control (Lane 2) immunoprecipitated with ab180503 at 1/30 dilution. Rabbit TrueBlot®:Anti-Rabbit IgG HRP secondary antibody used at 1/1500 dilution.



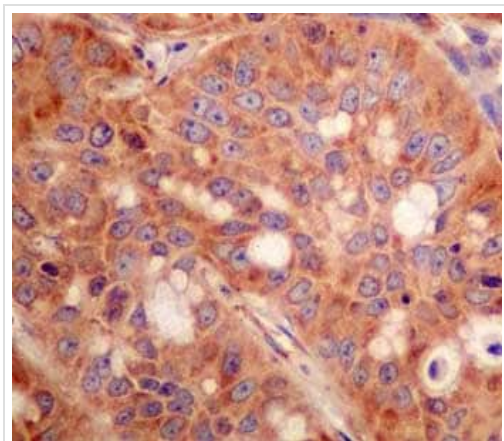
Flow Cytometry (Intracellular) - Anti-POR1 antibody [EPR11943] (ab180503)

Intracellular flow cytometric analysis of 2% paraformaldehyde-fixed SH-SY5Y cells labeling POR2 with ab180503 at 1/150 dilution (red), compared to a Rabbit monoclonal IgG isotype control (green), followed by Goat anti rabbit IgG (FITC) secondary antibody at 1/75 dilution.



Immunocytochemistry/ Immunofluorescence - Anti-POR1 antibody [EPR11943] (ab180503)

Immunofluorescent analysis of 4% paraformaldehyde-fixed SH-SY5Y cells labeling POR2 with ab180503 at 1/1000 dilution, followed by Goat anti rabbit IgG (DyLight 555) secondary antibody at 1/250 dilution. Counter stained with DAPI.



Immunohistochemistry (Formalin/PFA-fixed paraffin-embedded sections) - Anti-POR1 antibody [EPR11943] (ab180503)

Immunohistochemical analysis of paraffin-embedded Human gastric carcinoma tissue labeling POR2 with ab180503 at 1/500 dilution, followed by ImmunoHistoprobe (Ready to use) HRP Polymer for Rabbit IgG. Counter stained with Hematoxylin.

Perform heat mediated antigen retrieval with EDTA buffer pH 9 before commencing with IHC staining protocol.

Why choose a recombinant antibody?



Research with confidence
Consistent and reproducible results



Long-term and scalable supply
Recombinant technology



Success from the first experiment
Confirmed specificity



Ethical standards compliant
Animal-free production

Anti-POR1 antibody [EPR11943] (ab180503)

Please note: All products are "FOR RESEARCH USE ONLY. NOT FOR USE IN DIAGNOSTIC PROCEDURES"

Our Abpromise to you: Quality guaranteed and expert technical support

- Replacement or refund for products not performing as stated on the datasheet
- Valid for 12 months from date of delivery
- Response to your inquiry within 24 hours
- We provide support in Chinese, English, French, German, Japanese and Spanish
- Extensive multi-media technical resources to help you
- We investigate all quality concerns to ensure our products perform to the highest standards

If the product does not perform as described on this datasheet, we will offer a refund or replacement. For full details of the Abpromise, please visit <https://www.abcam.com/abpromise> or contact our technical team.

Terms and conditions

- Guarantee only valid for products bought direct from Abcam or one of our authorized distributors