




Product datasheet

Anti-PP-T antibody [12F7] ab223367

KO VALIDATED

★★★★☆ [1 Abreviews](#) [4 Images](#)

Overview

Product name	Anti-PP-T antibody [12F7]
Description	Mouse monoclonal [12F7] to PP-T
Host species	Mouse
Tested applications	Suitable for: ICC/IF, WB
Species reactivity	Reacts with: Human Predicted to work with: Mouse, Rat 
Immunogen	Recombinant full length protein corresponding to Human PP-T aa 1 to the C-terminus. Database link: P53041  Run BLAST with  Run BLAST with
Positive control	WB: A431, HEK-293 and Jurkat whole cell lysate (ab7899). ICC/IF: HeLa and HEK-293 cells.
General notes	<p>The Life Science industry has been in the grips of a reproducibility crisis for a number of years. Abcam is leading the way in addressing this with our range of recombinant monoclonal antibodies and knockout edited cell lines for gold-standard validation. Please check that this product meets your needs before purchasing.</p> <p>If you have any questions, special requirements or concerns, please send us an inquiry and/or contact our Support team ahead of purchase. Recommended alternatives for this product can be found below, along with publications, customer reviews and Q&As</p>

Properties

Form	Liquid
Storage instructions	Shipped at 4°C. Store at +4°C short term (1-2 weeks). Upon delivery aliquot. Store at -20°C long term. Avoid freeze / thaw cycle.
Storage buffer	Preservative: 0.09% Sodium azide Constituents: 50% Glycerol (glycerin, glycerine), PBS
Purity	Protein G purified
Clonality	Monoclonal
Clone number	12F7
Isotype	IgG1

Applications

The Abpromise guarantee

Our **Abpromise guarantee** covers the use of ab223367 in the following tested applications.

The application notes include recommended starting dilutions; optimal dilutions/concentrations should be determined by the end user.

Application	Abreviews	Notes
ICC/IF		1/100.
WB	★★★★★ (1)	1/1000. Detects a band of approximately 58 kDa (predicted molecular weight: 56 kDa).

Target

Function

May play a role in the regulation of RNA biogenesis and/or mitosis. In vitro, dephosphorylates serine residues of skeletal muscle phosphorylase and histone H1.

Tissue specificity

Ubiquitous.

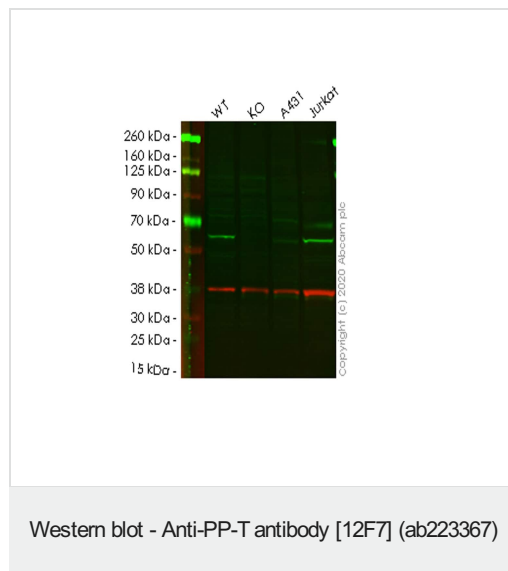
Sequence similarities

Belongs to the PPP phosphatase family. PP-5 (PP-T) subfamily. Contains 3 TPR repeats.

Cellular localization

Nucleus. Cytoplasm. Predominantly nuclear. But also present in the cytoplasm.

Images



All lanes : Anti-PP-T antibody [12F7] (ab223367) at 1/1000 dilution

Lane 1 : Wild-type HEK293T cell lysate

Lane 2 : PPP5C knockout HEK293T cell lysate

Lane 3 : A431 cell lysate

Lane 4 : Jurkat cell lysate

Lysates/proteins at 20 µg per lane.

Secondary

All lanes : Goat Anti-Rabbit IgG H&L (IRDye® 680RD) preadsorbed ([ab216777](#)) at 1/10000 dilution

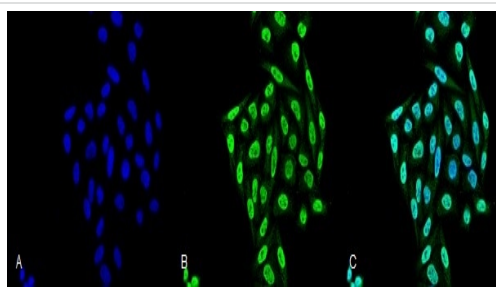
Predicted band size: 56 kDa

Observed band size: 58 kDa

Lanes 1-4: Merged signal (red and green). Green - ab223367

observed at 58 kDa. Red - loading control **ab181602** observed at 36 kDa.

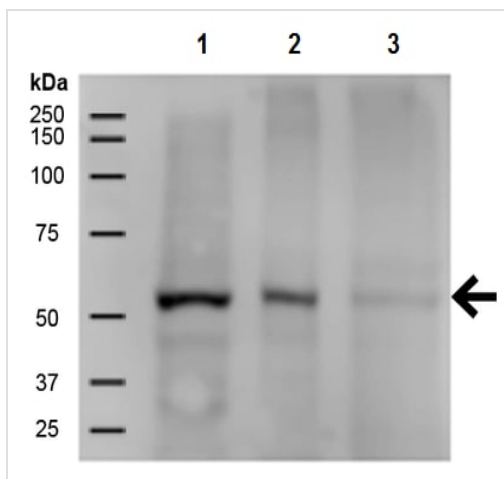
ab223367 Anti-PP-T antibody [12F7] was shown to specifically react with PP-T in wild-type HEK293T cells. Loss of signal was observed when knockout cell line **ab266507** (knockout cell lysate **ab258136**) was used. Wild-type and PP-T knockout samples were subjected to SDS-PAGE. ab223367 and Anti-GAPDH antibody[EPR16891] - Loading Control (**ab181602**) were incubated overnight at 4°C at 1 in 1000 dilution and 1 in 20000 dilution respectively. Blots were developed with Goat anti-Rabbit IgG H&L (IRDye® 680RD) preadsorbed (**ab216777**) and Goat anti-Mouse IgG H&L (IRDye® 800CW) preadsorbed (**ab216772**) secondary antibodies at 1 in 20000 dilution for 1 hour at room temperature before imaging.



Immunocytochemistry/ Immunofluorescence - Anti-PP-T antibody [12F7] (ab223367)

4% formaldehyde-fixed HeLa (human epithelial cell line from cervix adenocarcinoma) cells stained for PP-T (green) using ab223367 at 1/100 dilution for 60 minutes at room temperature in ICC/IF, followed by Goat Anti-Mouse ATTO 488 at 1/100 dilution for 60 minutes at room temperature. Counterstain: DAPI (blue) nuclear stain at 1/5000 for 5 minutes room temperature.

(A) DAPI nuclear stain (B) ab223367 (C) Merge.



Western blot - Anti-PP-T antibody [12F7] (ab223367)

All lanes : Anti-PP-T antibody [12F7] (ab223367) at 1/500 dilution

Lane 1 : A431 (human epidermoid carcinoma cell line) cell lysate

Lane 2 : HEK-293 (human epithelial cell line from embryonic kidney) cell lysate

Lane 3 : Jurkat (human T cell leukemia cell line from peripheral blood) cell lysate

Lysates/proteins at 15 µg per lane.

Secondary

All lanes : Goat Anti-Mouse IgG HRP at 1/200 dilution

Developed using the ECL technique.

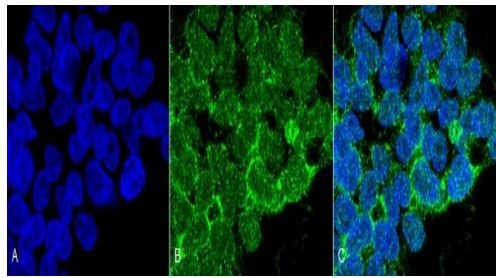
Predicted band size: 56 kDa

Observed band size: 58 kDa

Exposure time: 6 minutes

Blocking buffer: 5% skim milk.

Primary and secondary antibodies were incubated for 1 hour at room temperature.



Immunocytochemistry/ Immunofluorescence - Anti-PP-T antibody [12F7] (ab223367)

2% formaldehyde-fixed HEK-293 (human epithelial cell line from embryonic kidney) cells stained for PP-T (green) using ab223367 at 1/50 dilution in ICC/IF, followed by Goat Anti-Mouse Alexa Fluor 488 at 1/100 dilution for 60 minutes at RT. Counterstain: DAPI (blue) nuclear stain.

(A) DAPI nuclear stain (B) ab223367 (C) Merge.

Please note: All products are "FOR RESEARCH USE ONLY. NOT FOR USE IN DIAGNOSTIC PROCEDURES"

Our Abpromise to you: Quality guaranteed and expert technical support

- Replacement or refund for products not performing as stated on the datasheet
- Valid for 12 months from date of delivery
- Response to your inquiry within 24 hours
- We provide support in Chinese, English, French, German, Japanese and Spanish
- Extensive multi-media technical resources to help you
- We investigate all quality concerns to ensure our products perform to the highest standards

If the product does not perform as described on this datasheet, we will offer a refund or replacement. For full details of the Abpromise, please visit <https://www.abcam.com/abpromise> or contact our technical team.

Terms and conditions

- Guarantee only valid for products bought direct from Abcam or one of our authorized distributors